



Hammersmith Grove W6



Hammersmith Grove W6

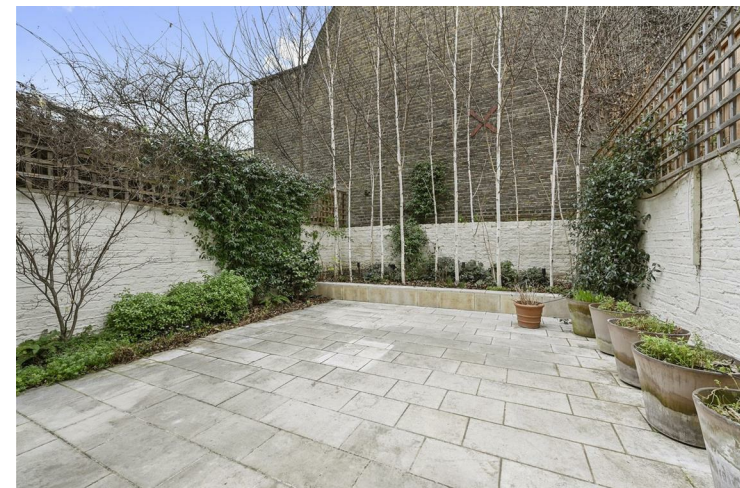
- 3 DOUBLE BEDROOMS
 - RECEPTION
- KITCHEN/DINING ROOM
 - STUDY
- BATHROOM (EN SUITE)
 - SHOWER ROOM
 - UTILITY ROOM
- PAVED GARDEN
- EPC RATING C 69
- COUNCIL TAX BAND F

A truly fabulous 3 double bedroom maisonette arranged over the ground and lower ground floors of an imposing Victorian property with a generous paved private garden and 2 balconies. The elegant reception is to the front of the ground floor with a bay window, feature fireplace with dwarf cupboards and shelving and wide-planked wood floors. There are pocket doors which open into the contemporary kitchen/dining room which has an island, built in appliances and abundant storage. The dining area is to the rear with sliding glass doors onto a balcony. There are a few stairs from the dining area to the dedicated study which has French doors onto a 2nd balcony which has stairs down to the garden. There are 3 double bedrooms, 2 bathrooms and a utility room on the garden level including the principal bedroom which is to the front of the property with bay window, excellent built in cupboards and en suite bathroom. There is access to the spacious paved garden from both bedrooms to the rear of this floor. This beautifully presented property of approximately 1550 sq ft oozes elegance and style and can be moved into without further expense.

£1,475,000

LEASEHOLD - SHARE OF FREEHOLD

SUBJECT TO CONTRACT

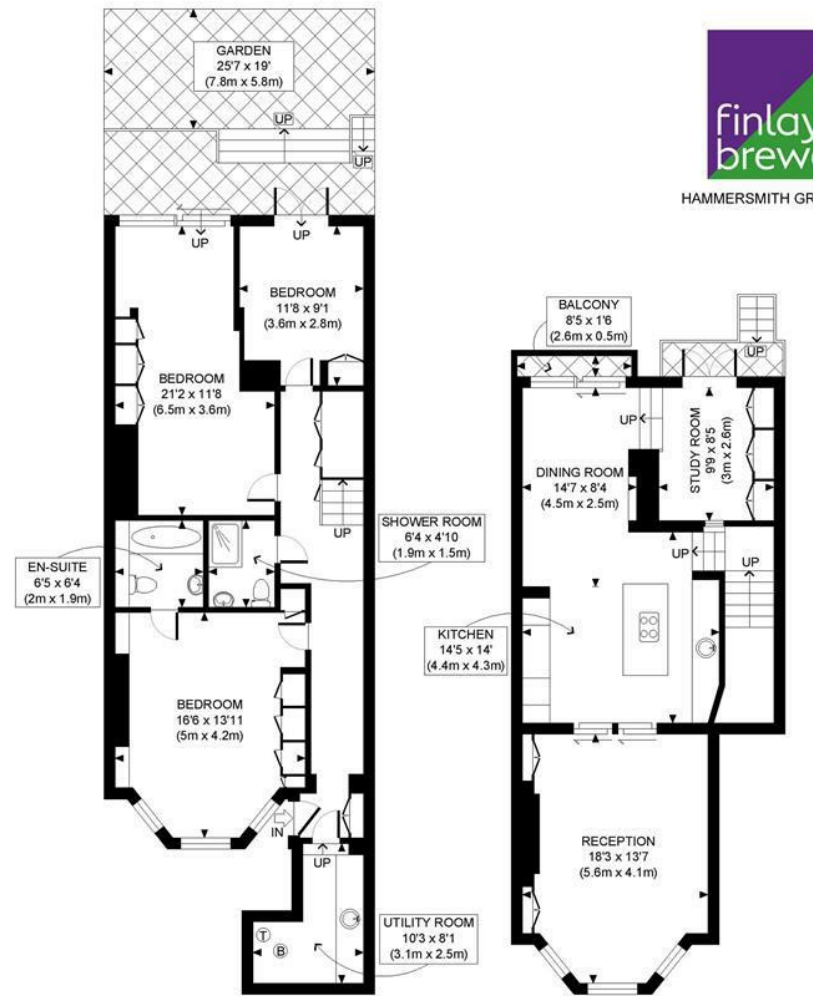








HAMMERSMITH GROVE, W6



LOWER GROUND FLOOR
GROSS INTERNAL
FLOOR AREA 857 SQ FT

GROSS INTERNAL
FLOOR AREA 691 SQ FT

APPROX. GROSS INTERNAL FLOOR AREA: 1548 SQ FT/ 144 SQM

PROPERTY PHOTO PLANS .CO.UK

ONE STOP SHOP FOR PROPERTY MARKETING

This plan is for illustrative purposes only and should be used as such by any prospective client. Whilst every attempt has been made to ensure the accuracy of the Floor Plan contained here, measurements of the doors, windows, rooms and any other items are approximate and no responsibility is taken for any errors, omissions, or misstatement. The services, systems and appliances shown have not been tested and no guarantee as to the operability or efficiency can be given.