



Sterne Street W12





## Sterne Street W12

**4 Double Bedrooms**  
**Open plan Reception/Kitchen/Dining**  
**Room \* 3 Bathrooms (1 En Suite)**  
**Principal Bedroom Suite**  
**Guest Cloakroom**  
**Paved & Walled Southerly Garden**  
**EPC Rating D 67 \* Council Tax Band F**

**A wider than average 4 double bedroom  
3 bathroom Victorian terraced house  
with a wonderful walled and paved  
mature southerly garden.**

The generous kitchen/dining room is to the front with 2 feature fireplaces and a bay window. The Poggenpohl kitchen is to the centre with an island and built in appliances and opens into the fabulous full width reception which has floor to ceiling sliding doors onto the pretty garden. There is also a guest cloakroom on this floor with under stairs storage. There are 4 double bedrooms, 3 bathrooms and a study on the upper floors including the fabulous principal bedroom suite which includes a study, dressing area, en suite shower room and private reception area/library with feature fireplace. This extra wide and cleverly configured house of approximately 1900 sq ft is flooded with light and has a great feel. It is excellently located within walking distance to Holland Park, Notting Hill and the amenities and leisure facilities of Westfield London and White City House in addition to the transport hub of Shepherds Bush.

**GUIDE: £1.675M**  
**FREEHOLD**

SUBJECT TO CONTRACT





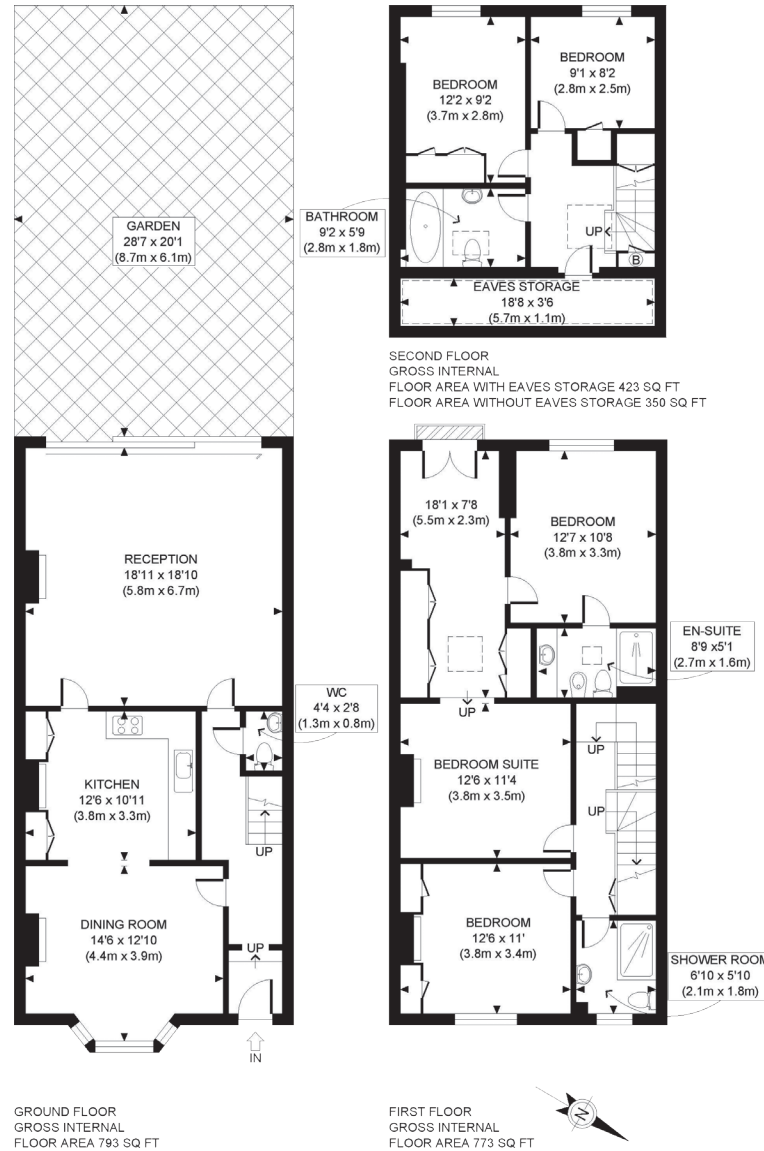








Approximate Gross Internal Floor Area With Eaves Storage 1,989 Sq Ft/185 Sq M  
 Approximate Gross Internal Floor Area Without Eaves Storage 1,916 Sq Ft/178 Sq M



FOR ILLUSTRATIVE PURPOSES ONLY - NOT TO SCALE  
 The position & size of doors, windows, appliances and other features are approximate only.