



Anley Road W14



Anley Road W14

5 Bedrooms
Double Reception
Full Width Kitchen/Breakfast Room
2 Bathrooms
Lawned Garden
Extensive Eaves Storage
Council Tax Band F
EPC Rating D 56

A charming 5 bedroom 2 bathroom Victorian terraced house with good living/entertaining space on the ground floor and a 'London lawned' garden.

The double reception has a herringbone wood floor with feature fireplace and bay window to the front. The full width kitchen/breakfast room has integrated appliances, an island and 2 sets of French doors onto the garden. There are 5 bedrooms on the upper floors, all with built-in cupboards, and 2 bathrooms. There is also plumbing in place for an en suite to the first floor principal bedroom should a buyer choose to install one. This property is flooded with light, has a lovely feel and is ideally located for good transport links and excellent local schools.

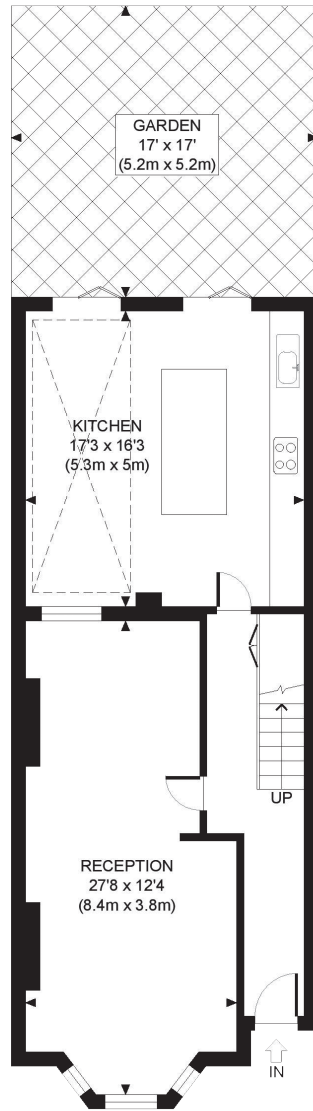
GUIDE: £1.675M
FREEHOLD

SUBJECT TO CONTRACT

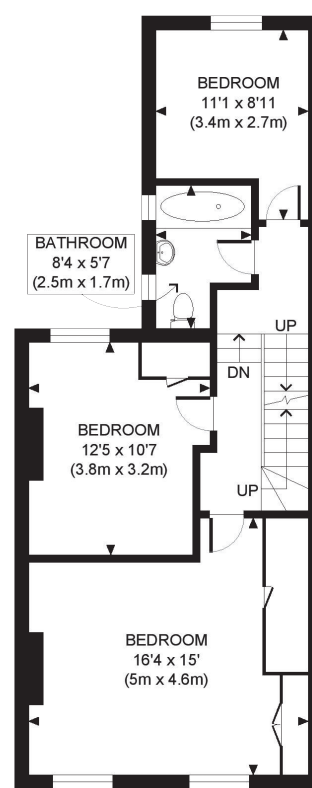




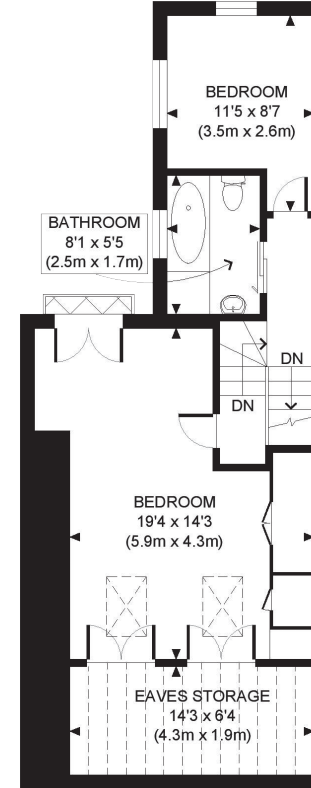
Approximate Gross Internal Floor Area With Eaves Storage 1,868 Sq Ft/174 Sq M
 Approximate Gross Internal Floor Area Without Eaves Storage 1,757 Sq Ft/163 Sq M



GROUND FLOOR
 GROSS INTERNAL
 FLOOR AREA 710 SQ FT



FIRST FLOOR
 GROSS INTERNAL
 FLOOR AREA 575 SQ FT



SECOND FLOOR
 GROSS INTERNAL
 FLOOR AREA WITH EAVES STORAGE 583 SQ FT
 FLOOR AREA WITHOUT EAVES STORAGE 472 SQ FT

FOR ILLUSTRATIVE PURPOSES ONLY - NOT TO SCALE
 The position & size of doors, windows, appliances and other features are approximate only.