



Brackenbury Gardens W6



## Brackenbury Gardens W6

- 4 DOUBLE BEDROOMS
- DOUBLE RECEPTION
- KITCHEN/BREAKFAST ROOM
  - SHOWER ROOM
  - GUEST CLOAKROOM
- EXTENSIVE CELLAR STORAGE
- POTENTIAL TO EXTEND STPP
  - EPC RATING TBC
  - COUNCIL TAX BAND G

A wonderful, big-boned 4 double bedroom Victorian terraced house with very good living/entertaining space on the ground floor and a lovely walled garden which is initially tiled with the remainder set to grass and has surrounding mature shrubs and trees. The high ceilinged double reception has a feature fireplace, bay window to the front and large sash window overlooking the side return. The kitchen/breakfast room is to the rear with access to the garden. There is a shower room and linen cupboard on the half landing with 4 good sized double bedrooms and guest cloakroom on the upper floors. The house has a lovely feel, occupies an excellent position on the street and provides a great opportunity to extend over the side return, create another room/bathroom on the second half landing and excavate the already sizeable cellar / basement subject to the usual planning consents.

**PRICE GUIDE £1.75M**  
**FREEHOLD**

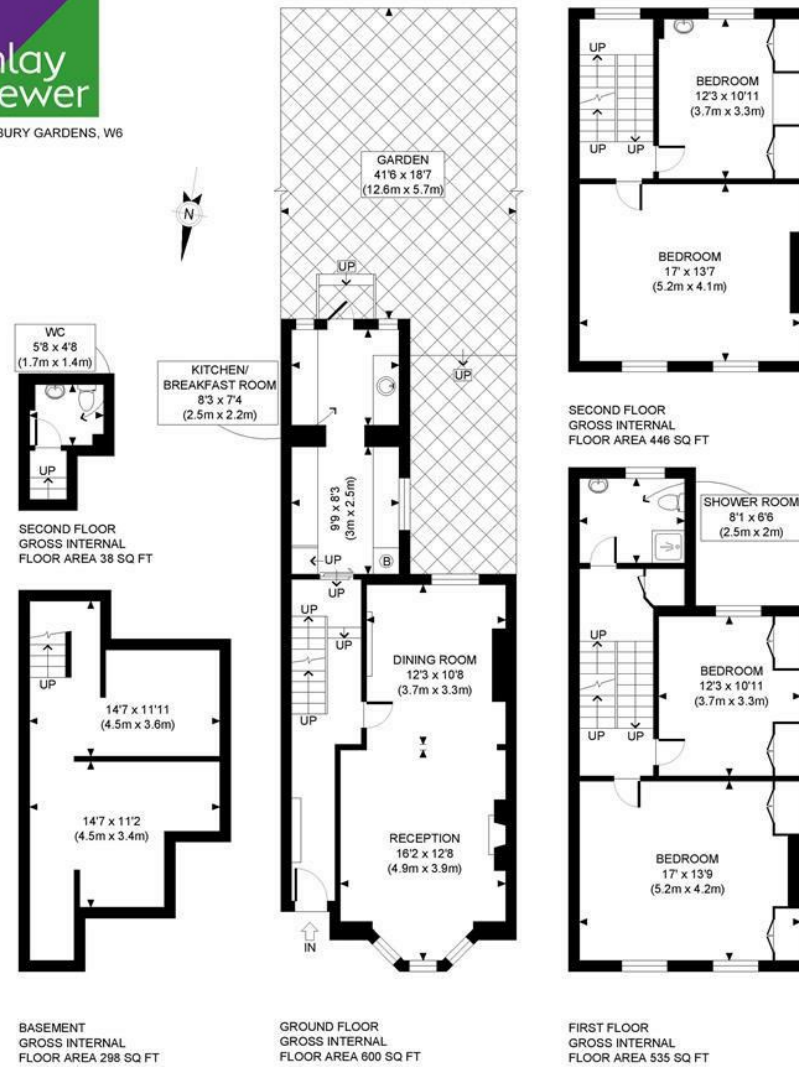
**SUBJECT TO CONTRACT**







BRACKENBURY GARDENS, W6



**PROPERTY PHOTO PLANS**.CO.UK  
ONE STOP SHOP FOR PROPERTY MARKETING

This plan is for illustrative purposes only and should be used as such by any prospective client. Whilst every attempt has been made to ensure the accuracy of the Floor Plan contained here, measurements of the doors, windows, rooms and any other items are approximate and no responsibility is taken for any errors, omissions, or misstatement. The services, systems and appliances shown have not been tested and no guarantee as to the operability or efficiency can be given.