



The Granary Hodgeston, Pembrokeshire, SA71 5JU

Offers In The Region Of £699,950

A remarkable detached former Granary of stone construction, situated in the small quaint South Pembrokeshire village of Hodgeston. The village is close to the coast with a choice of stunning beaches near by at Fresh Water East, Barafundle Bay and Manorbier to name but a few. This unique home provides wonderful accommodation of an excellent spacious size and boasts an abundance of incredible character throughout. A particular design feature this property has, are the twin sets of external double doors which open out from the kitchen/diner and living room into an enclosed courtyard and south facing walled garden, bringing the outside/inside. There are 3/4 bedrooms (three upstairs and the choice of a fourth downstairs) with a generous master bedroom and ensuite. Within the grounds is a detached group of stone buildings with excellent conversion potential (stp) currently providing 2 stables and a store room/workshop. Needless to say, viewing is essential to appreciate this special and one of a kind property.

Accommodation



Front door with decorative glass opens into:

Entrance Hall



Wooden flooring, stairs rise to first floor, radiator, arrow slit window, doors open to second bedroom/4th bedroom and shower room. Glazed double doors open to:

Lounge



Exposed wooden flooring, superb stone fireplace with wood burning stove, double glazed external French doors to garden, double glazed window to rear, radiators, door opens to:



Kitchen/Diner



Continuation of wooden flooring, wood burnings stove, double glazed windows to rear, radiators, double glazed external French doors to front courtyard, open plan layout through to a bespoke fitted kitchen with wooden worktops, exposed beams, storage cupboards, integrated fridge/freezer, pantry cupboard, deep pan draws, Leisure range cooker, canopy extractor hood, large porcelain double sink with drainer, tiled splash backs, tiled floor, double glazed window to front, kitchen island with storage. Door to Utility.



Utility

Fitted wall and base storage units, worktops, integrated fridge, 2 and a half bowl sink, plumbing for washing machine and dish washer, tiled floor, Grant oil fired boiler serving the domestic hot water and central heating, upvc external door to rear.

2nd Reception / 4th Bedroom



L-shape room, 2 double glazed windows to front, radiator, arrow slit window.

Shower Room



Comprising a corner shower cubical, W.C, pedestal wash hand basin, tiled floor, radiator, double glazed window.

First Floor Gallery Landing



Velux window, spindle balustrade, wooden floor, built in airing cupboard with radiator and shelving, double glazed window, doors open to:

Bedroom 1



2 Velux windows, wooden flooring, fitted wardrobes and storage, radiators, opening leads to:

En-Suite



Comprising a shower enclosure, W.C, bidet, wash hand basin and vanity unit, heated towel rail, part tiled walls.

Bedroom 2



Double glazed window, wooden flooring, radiator, built in wardrobe.

Bedroom 3



Velux window, window to side, wooden floor, radiator.

Bathroom



Comprising a bath with shower tap over, W.C, pedestal wash basin, part tiled walls, velux window, wooden flooring.

Externally

The property enjoys a private and gated gravelled driveway/front parking area, from where access leads to the outbuildings and arched gateway to the main garden. This area is lovely and enclosed partly by a stone wall, with established beds of shrubs and trees set around a level lawn. The garden extends across the far side and rear.

The Outbuildings



Comprising 3 useful and versatile buildings used for stabling and general storage/workshop space. These not only provide practical usage but have excellent potential for conversion subject to planning.

Sunny Garden



Services

We understand mains water and electric are connected. Private drainage. The land has its own natural water source.

Tenure

Freehold upon completion.

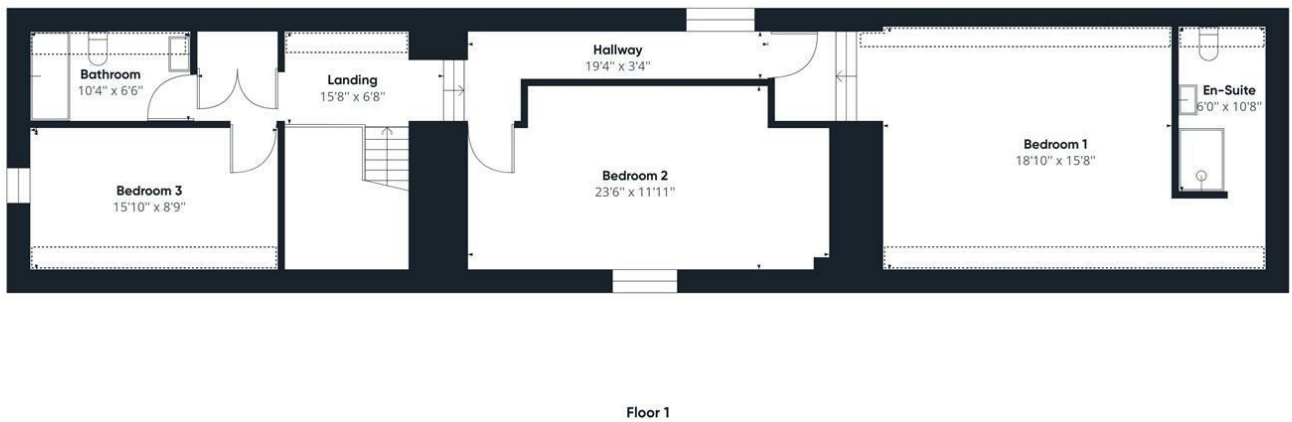
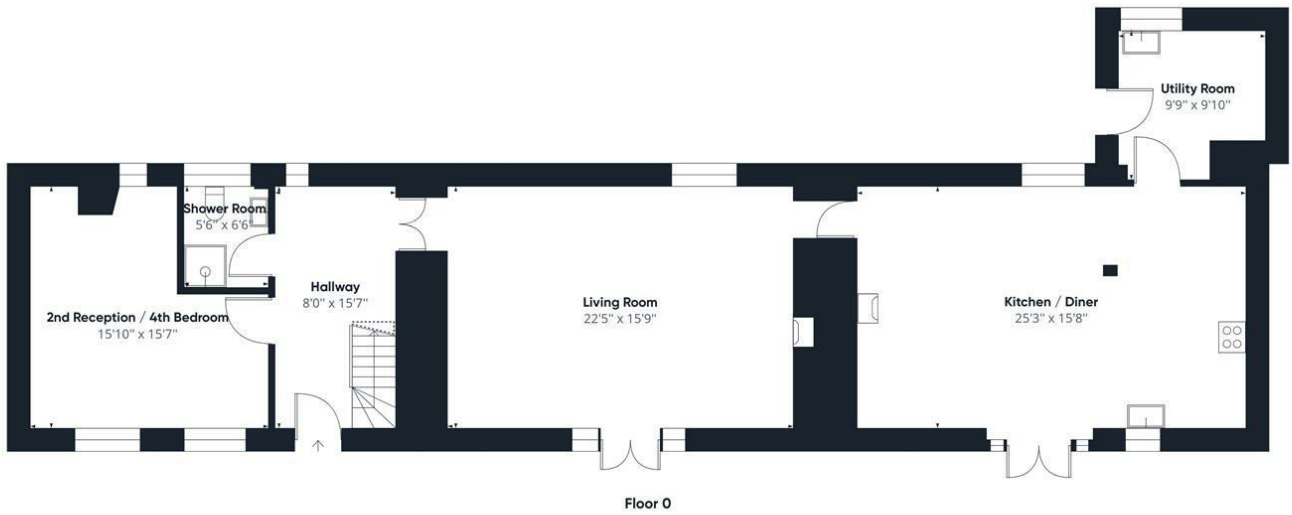
Directions



Hodgeston is found along the A4139, (Tenby to Pembroke road). Once in the village itself, turn by the old stone church and the property is found almost opposite with a gated entrance and name plaque.

What 3 Words Location: [///spices.blankets.refilled](http://spices.blankets.refilled)

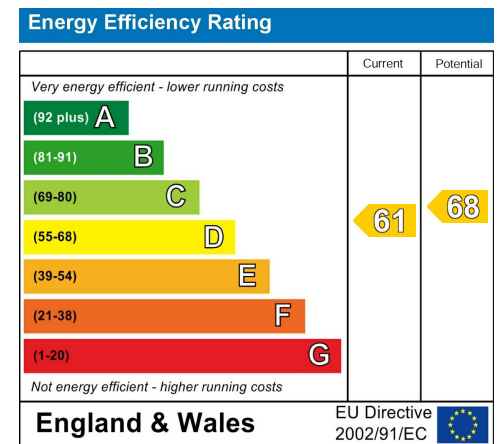
Floor Plan



Area Map



Energy Efficiency Graph



These particulars, whilst believed to be accurate are set out as a general outline only for guidance and do not constitute any part of an offer or contract. Intending purchasers should not rely on them as statements of representation of fact, but must satisfy themselves by inspection or otherwise as to their accuracy. No person in this firm's employment has the authority to make or give any representation or warranty in respect of the property.

5 High Street, Cardigan,
Ceredigion, SA43 1HJ
T: 01239 612 343
E: cardigan@jjmorris.com

21 West Street, Fishguard
Pembrokeshire, SA65 9AL
T: 01348 873 836
E: fishguard@jjmorris.com

4 Picton Place, Haverfordwest
Pembrokeshire, SA61 2LX
T: 01437 760 440
E: haverfordwest@jjmorris.com

Hill House, Narberth,
Pembrokeshire, SA67 7AR
T: 01834 860 260
E: narberth@jjmorris.com