



Hasker Street, Chelsea SW3

ASHDOWN MARKS
PROPERTY CONSULTANTS

Hasker Street, Chelsea SW3 2LE

The house is brilliantly designed and offers a wonderful reception room leading onto a west facing terrace and a superb kitchen/ dining room.

The accommodation comprises master bedroom with en suite shower room, second bedroom with en suite shower room, two further bedrooms, separate family bathroom, guest cloakroom, utility room and good storage. Ideally located close to Knightsbridge, Brompton Cross and Sloane Square.

- Drawing Room
- Kitchen / Dining Room
- Four Bedrooms
- Three Bathrooms
- Cloakroom
- Utility Room
- West facing Terrace & Patio
- Council Tax: Band H
- EPC: Rating D

Freehold Price £3,295,000





Hasker Street, SW3

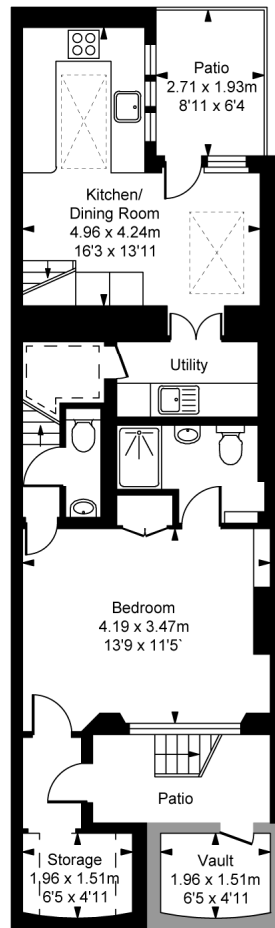
■ Approximate Gross Internal Area
149.84 sq m / 1,613 sq ft

■ Vault
2.90 sq m / 31 sq ft

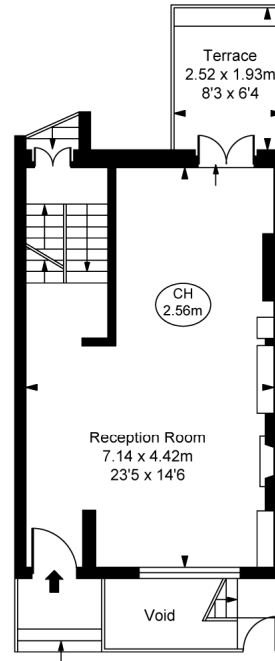
Total Areas Including Vault
152.74 sq m / 1,644 sq ft

(Including restricted height
under 1.5m □ □ □ □ □ □)

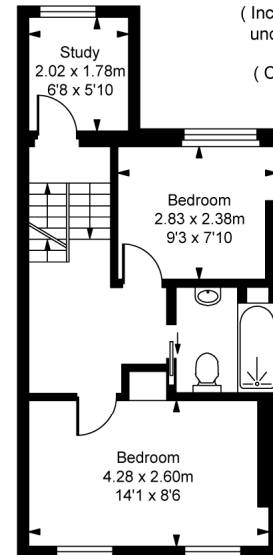
(CH = Ceiling Heights)



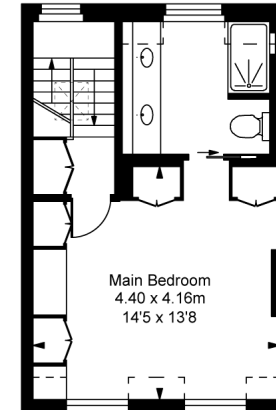
Lower Ground Floor
Approximate Gross Internal Area
52.83 sq m / 569 sq ft



Ground Floor
Approximate Gross Internal Area
32.24 sq m / 347 sq ft



First Floor
Approximate Gross Internal Area
35.25 sq m / 379 sq ft



Second Floor
Approximate Gross Internal Area
29.52 sq m / 318 sq ft

This plan is not to scale. It is for guidance and not for valuation purposes.
All measurements and areas are approximate only, and have been prepared in accordance with the current edition of the RICS Code of Measuring Practice.
© Fulham Performance

Important notice: Ashdown Marks, their clients and any joint agents give notice that: 1: They are not authorised to make or give any representations or warranties in relation to the property either here or elsewhere, either on their own behalf or on behalf of their client or otherwise. They assume no responsibility for any statement that may be made in these particulars. These particulars do not form part of any offer or contract and must not be relied upon as statements or representations of fact. 2: Any areas, measurements or distances are approximate. The text, photographs and plans are for guidance only and are not necessarily comprehensive. It should not be assumed that the property has all necessary planning, building regulation or other consents and Ashdown Marks have not tested any services, equipment or facilities. Purchasers must satisfy themselves by inspection or otherwise.

9 Milner Street, London, SW3 2QB

Tel: 020 7589 3353

www.ashdownmarks.co.uk

ASHDOWN MARKS
PROPERTY CONSULTANTS