



Clabon Mews, Knightsbridge SW1X

ASHDOWN MARKS  
PROPERTY CONSULTANTS



## Clabon Mews

London, SW1X 0EJ

An immaculately presented mews house located on Clabon Mews comprising main bedroom with fitted wardrobes and en suite bathroom, two further bedrooms with good storage, large reception room, eat in kitchen and dining room with wood floors, family bathroom, separate cloakroom, roof terrace and internal garage.

The house is offered unfurnished and has the benefit of membership to Cadogan Square Gardens by separate negotiation.

- 3 Bedrooms
- 2 Bathrooms & Guest Cloakroom
- Reception Room
- Kitchen/Dining Room
- Garage
- Access to Garden Square by separate arrangement
- Roof Terrace
- Council Tax - Band H
- EPC - Rating C

**Unfurnished**

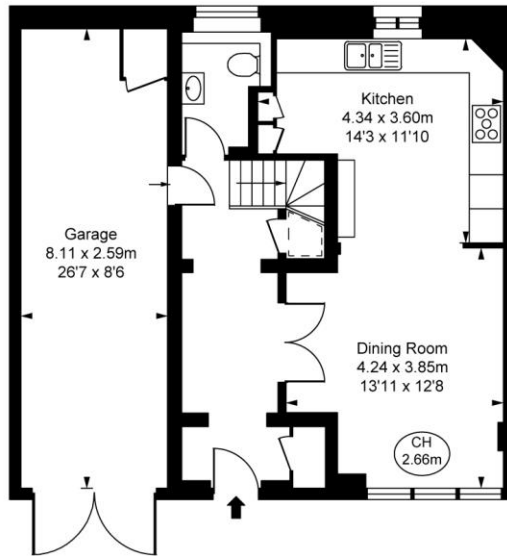
**Price £2,750 pw**



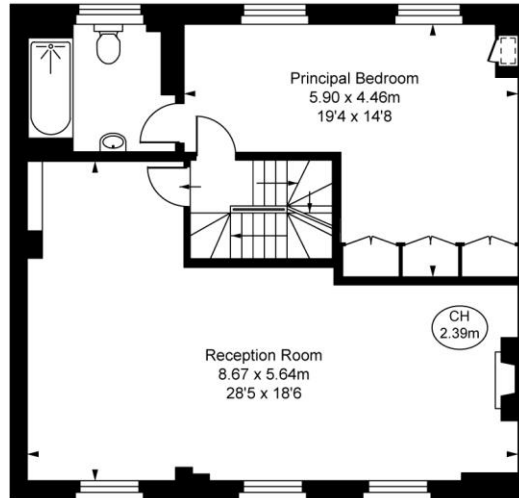


**Clabon Mews, SW1X**  
Approximate Gross Internal Area  
**194.37 sq m / 2,092 sq ft**

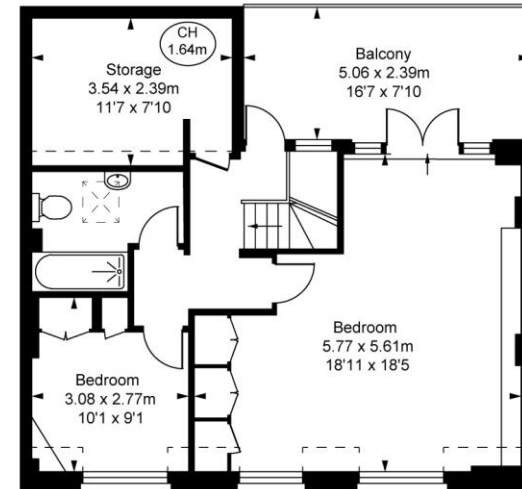
( Including restricted height  
under 1.5m [ = = = ] )  
( CH = Ceiling Heights )



**Ground Floor**  
Approximate Gross Internal Area  
67.75 sq m / 729 sq ft



**First Floor**  
Approximate Gross Internal Area  
69.74 sq m / 751 sq ft



**Second Floor**  
Approximate Gross Internal Area  
56.88 sq m / 612 sq ft

This plan is not to scale. It is for guidance and not for valuation purposes.  
All measurements and areas are approximate only, and have been prepared in accordance with the current edition of the RICS Code of Measuring Practice.  
© Fulham Performance

Important notice: Ashdown Marks, their clients and any joint agents give notice that: 1: They are not authorised to make or give any representations or warranties in relation to the property either here or elsewhere, either on their own behalf or on behalf of their client or otherwise. They assume no responsibility for any statement that may be made in these particulars. These particulars do not form part of any offer or contract and must not be relied upon as statements or representations of fact. 2: Any areas, measurements or distances are approximate. The text, photographs and plans are for guidance only and are not necessarily comprehensive. It should not be assumed that the property has all necessary planning, building regulation or other consents and Ashdown Marks have not tested any services, equipment or facilities. Purchasers must satisfy themselves by inspection or otherwise.

**9 Milner Street, London, SW3 2QB**

**Tel: 020 7589 3353**

**[www.ashdownmarks.co.uk](http://www.ashdownmarks.co.uk)**

**ASHDOWN MARKS**  
PROPERTY CONSULTANTS