



Hasker Street, Chelsea SW3

ASHDOWN MARKS
PROPERTY CONSULTANTS

Hasker Street

Chelsea SW3

An exceptional newly refurbished three bedroom period house situated in this very central location. The house benefits from excellent entertaining rooms on the ground and lower floors.

The accommodation comprises master bedroom with en suite bathroom, two further double bedrooms, family bathroom, study, guest cloakroom, double reception room, large kitchen with living and dining space leading onto good size paved garden, utility room and storage vaults.

- Newly Refurbished
- Drawing Room with Wooden Floors
- Kitchen/ Dining / Family Room
- Study
- Three bedrooms
- En Suite Bathroom
- Shower Room
- Utility Room / Cloakroom
- Paved Rear Garden
- EPC: Band D

Price £1,850 pw Unfurnished

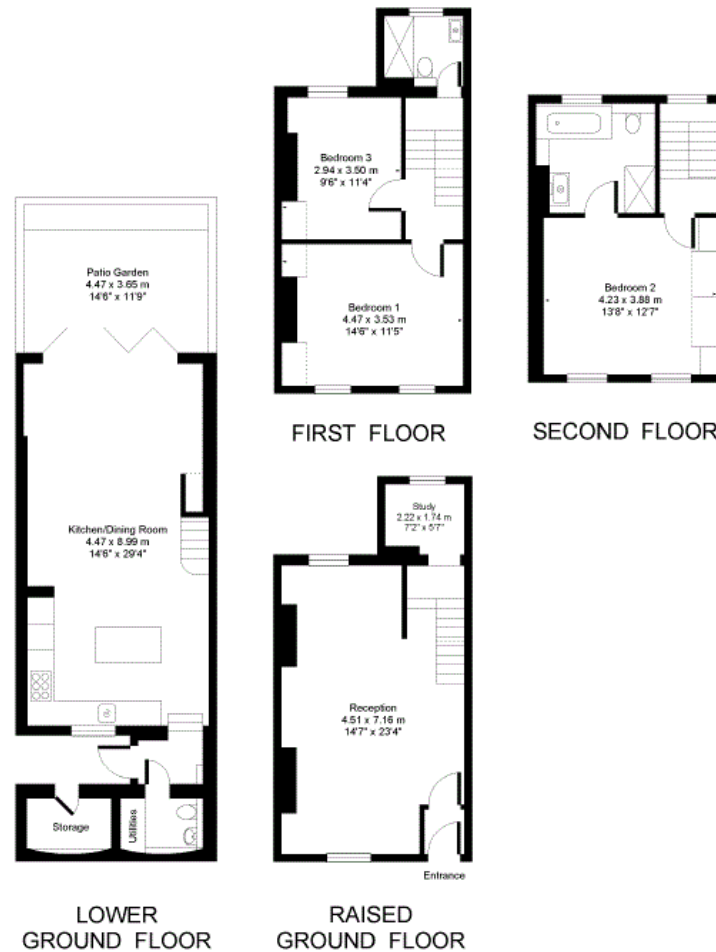




Hasker Street
SW3



Approx. Gross Floor Area = 152 sq.meters • 1636 sq.feet



For illustrative purposes only. Not to scale.

This floor plan is for guidance only. Measurements are approximate and not to scale. Windows and doors openings are approximate. Whilst care is taken in the preparation of this plan, please check all dimensions, shapes and compass bearings before making any decisions that are reliant on the information displayed. The services, systems and appliances shown have not been tested and no guarantee as to their operability or efficiency can be given. This floor plan was produced for Ashdown Marks and must not be shared or copied without prior consent.

Important notice: Ashdown Marks, their clients and any joint agents give notice that: 1: They are not authorised to make or give any representations or warranties in relation to the property either here or elsewhere, either on their own behalf or on behalf of their client or otherwise. They assume no responsibility for any statement that may be made in these particulars. These particulars do not form part of any offer or contract and must not be relied upon as statements or representations of fact. 2: Any areas, measurements or distances are approximate. The text, photographs and plans are for guidance only and are not necessarily comprehensive. It should not be assumed that the property has all necessary planning, building regulation or other consents and Ashdown Marks have not tested any services, equipment or facilities. Purchasers must satisfy themselves by inspection or otherwise.

9 Milner Street, London, SW3 2QB

Tel: 020 7589 3353

www.ashdownmarks.co.uk

ASHDOWN MARKS
PROPERTY CONSULTANTS