



Wilbraham Mansions, Wilbraham Place SW1X

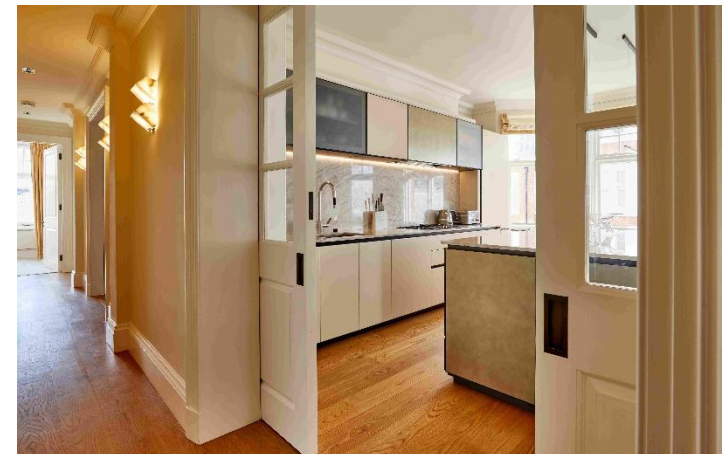
ASHDOWN MARKS
PROPERTY CONSULTANTS

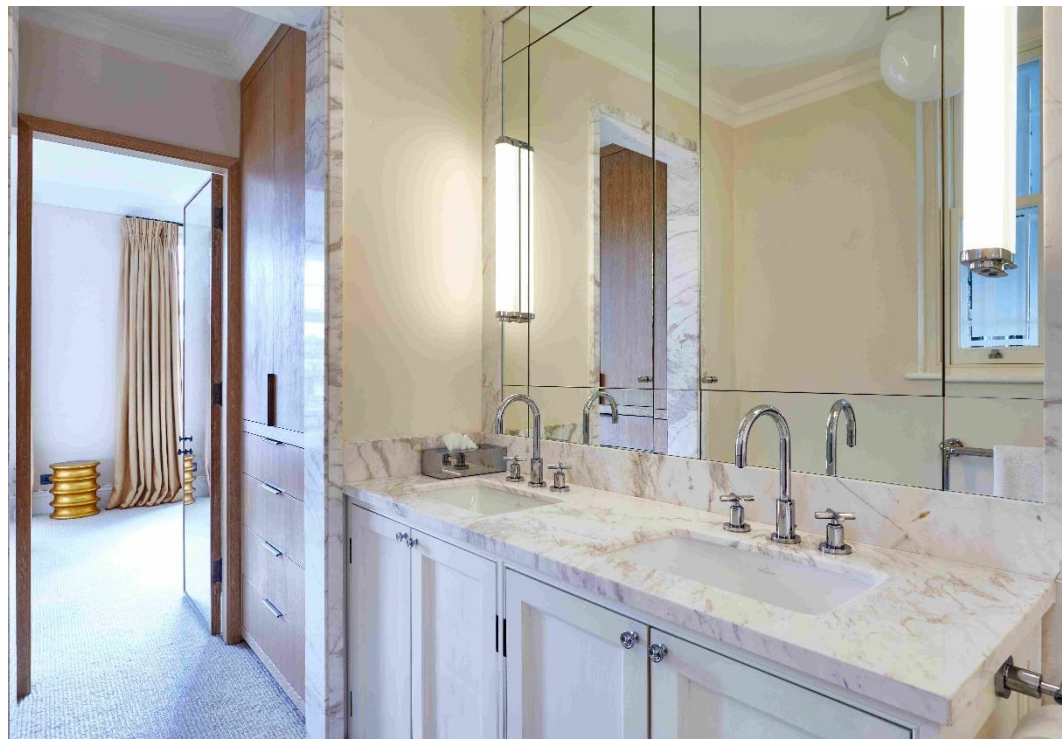
**Wilbraham Mansions,
Wilbraham Place SW1X 9AA**

A beautifully appointed three bedroom apartment (1,667 sq.ft / 154 sq.m) situated on the fourth floor of a prestigious mansion block in this quiet and highly desirable location, within a few minutes walk of Sloane Square.

The apartment has been tastefully refurbished in recent years to include wooden floors, new windows, Boffi kitchen and bespoke joinery and fittings.

The principal bedroom and bedroom two also enjoy fine open views towards Belgravia.





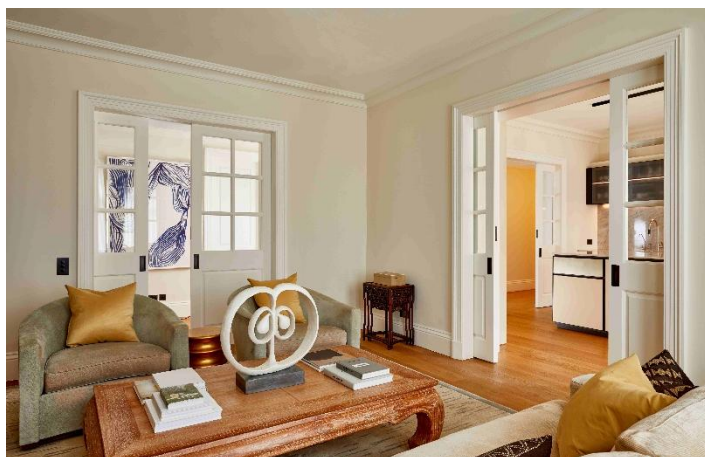


- Drawing Room
- Boffi Kitchen with Gaggenau and Miele appliances
- Two Double Bedrooms
- Bedroom Three/ Study
- Two Bathrooms (One En Suite)
- Cloakroom
- Utility Room
- Lift
- Resident Caretaker
- Under Pavement Storage Vault
- Sanitary Ware by Villeroy & Boch and Dornbracht
- Architectural lighting by John Cullen and Pierre Chareau
- EPC: Rating C Council Tax: Band H

Lease: 250 years from 25th March 1983
therefore 208 years remaining plus Share of Freehold.

Service Charge: £2,049 per quarter plus
£2,772 per quarter contribution to the
reserve fund, subject to review.

Share of Freehold **£4,550,000**

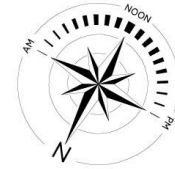


Wilbraham Mansions, SW1

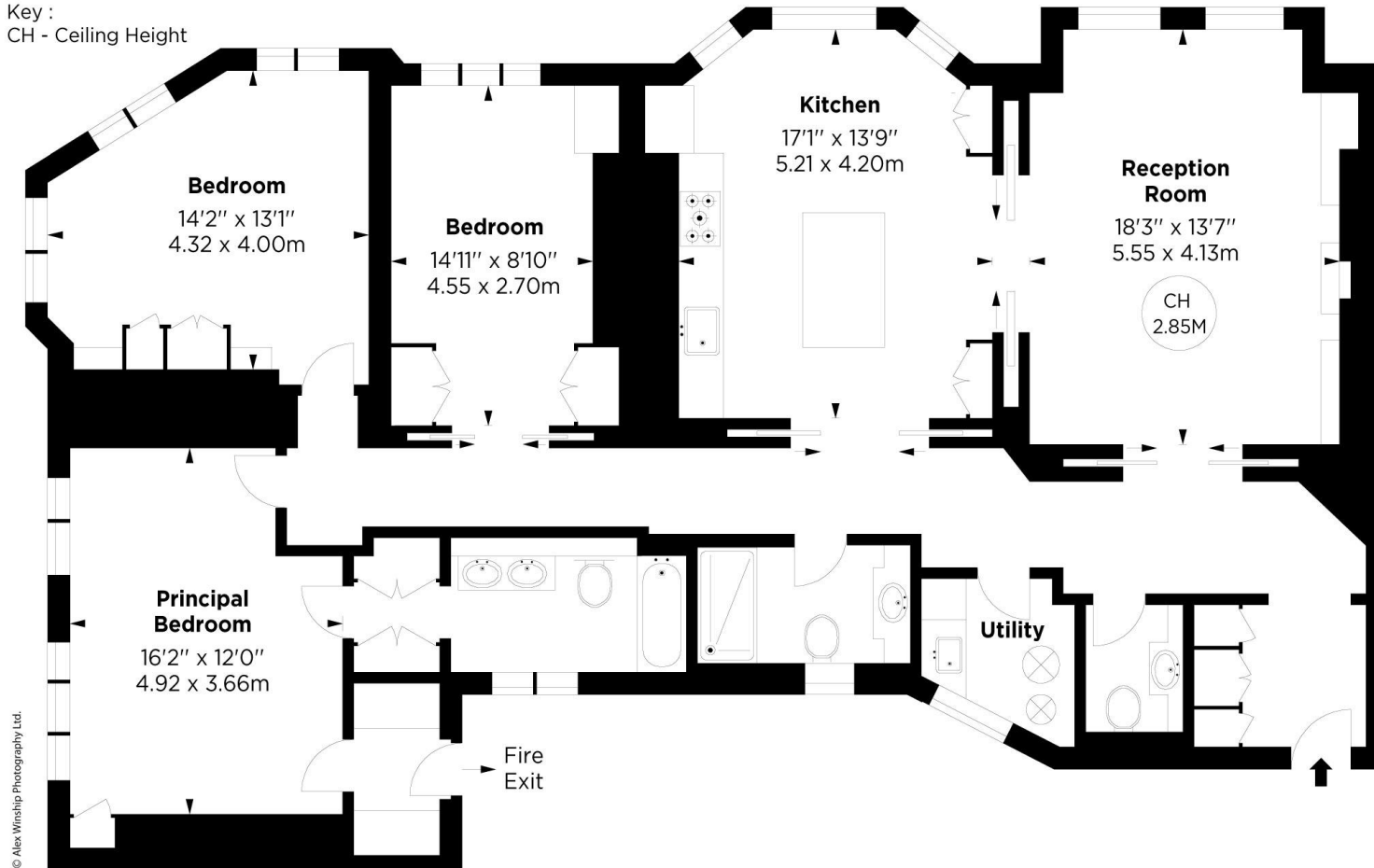
APPROX. GROSS INTERNAL AREA *

1667 Sq Ft - 154.91 Sq M

This floorplan is for GUIDANCE ONLY and NOT FOR VALUATION purposes.



Key :
CH - Ceiling Height



© Alex Winship Photography Ltd.

FOURTH FLOOR

ALEX
WINSHIP
Photography

*Floorplan for guidance only, not to scale or valuation purposes. It must not be relied upon as a statement of fact. All measurements and areas are approximate and have been prepared in accordance with the current edition of the RICS Code of Measuring Practice.



Important notice: Ashdown Marks, their clients and any joint agents give notice that: 1: They are not authorised to make or give any representations or warranties in relation to the property either here or elsewhere, either on their own behalf or on behalf of their client or otherwise. They assume no responsibility for any statement that may be made in these particulars. These particulars do not form part of any offer or contract and must not be relied upon as statements or representations of fact. 2: Any areas, measurements or distances are approximate. The text, photographs and plans are for guidance only and are not necessarily comprehensive. It should not be assumed that the property has all necessary planning, building regulation or other consents and Ashdown Marks have not tested any services, equipment or facilities.

9 Milner Street, London, SW3 2QB

Tel: +44 (0)20 7589 3353

www.ashdownmarks.co.uk

ASHDOWN MARKS
PROPERTY CONSULTANTS