



Stanhope Gardens, South Kensington SW7

ASHDOWN MARKS
PROPERTY CONSULTANTS

Stanhope Gardens

South Kensington, SW7 5BJ

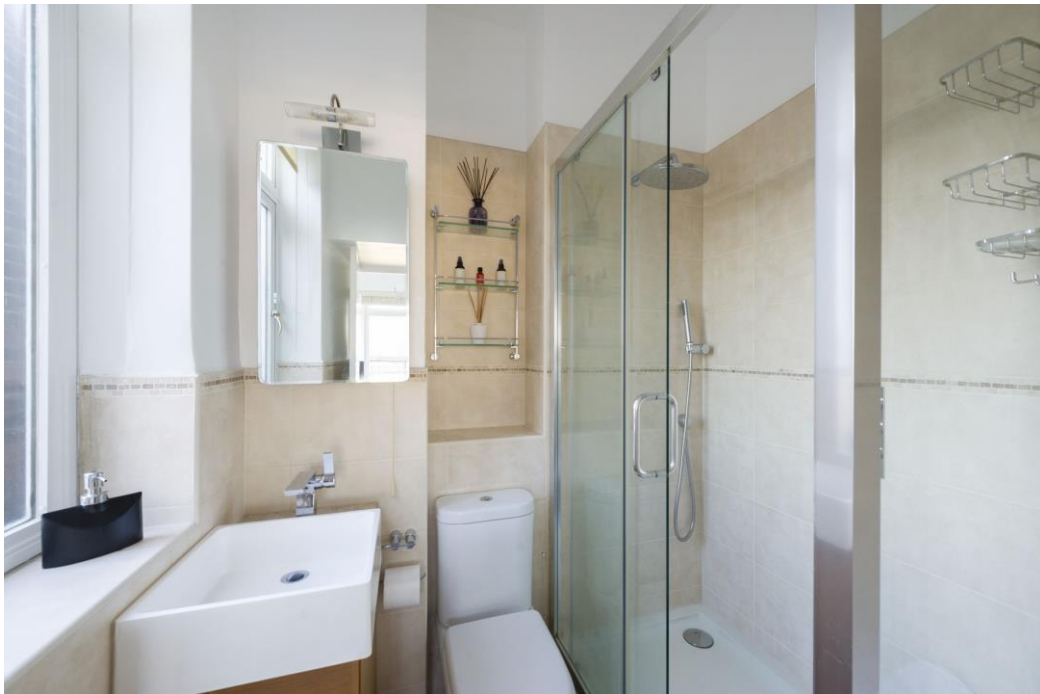
Approached through a smart entrance on Stanhope Gardens, this remarkable PENTHOUSE apartment has an 89ft / 27m wrap-around terrace and outstanding views. It offers a large open plan reception room with a new wood floor, a good main bedroom suite, two further bedrooms and a bathroom. Although well presented there is scope for some updating.

Built in the 1960`s, Derwent House has a large lift, day porter (weekdays 8am to 4pm), access to the communal gardens on application.

- Reception Room with Kitchen
- Three Bedrooms
- Two Bathrooms (One En Suite)
- Utility Room
- Lift
- Communal Garden subject to subscription
- EPC: Rating D Council Tax: Band D
- Lease: Expires December 2147 therefore approx 124 Years remaining
- Service Charge: Approx £16,500 p.a subject to review, to include heating & hot water and reserve fund contribution.

Guide Price £1,300,000





Derwent House, Stanhope Gardens, SW7

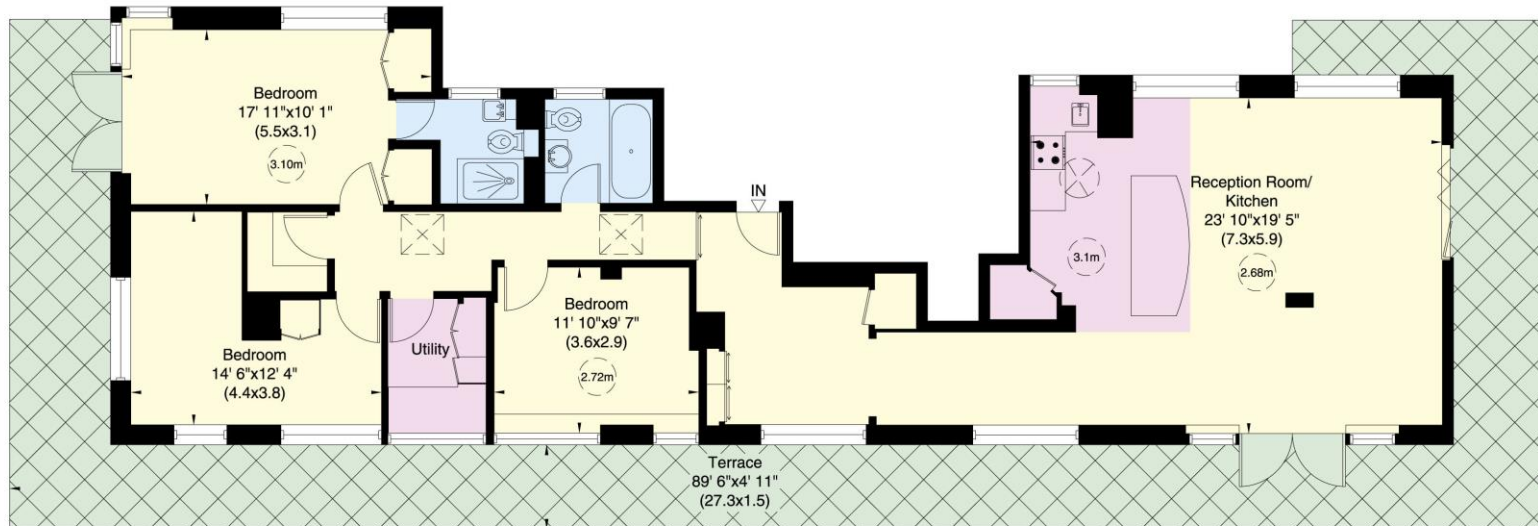
Approximate Gross Internal Area

123 sq m/ 1323 sq ft

Terrace

70 sq m/ 754 sq ft

Not to Scale, for identification only



Seventh Floor

For guidance only and must not be relied upon as a statement of fact.
All measurements and areas are approximate only (and have been prepared in accordance with the current edition of the RICS Code of Measuring Practice).



Important notice: Ashdown Marks, their clients and any joint agents give notice that: 1: They are not authorised to make or give any representations or warranties in relation to the property either here or elsewhere, either on their own behalf or on behalf of their client or otherwise. They assume no responsibility for any statement that may be made in these particulars. These particulars do not form part of any offer or contract and must not be relied upon as statements or representations of fact. 2: Any areas, measurements or distances are approximate. The text, photographs and plans are for guidance only and are not necessarily comprehensive. It should not be assumed that the property has all necessary planning, building regulation or other consents and Ashdown Marks have not tested any services, equipment or facilities. Purchasers must satisfy themselves by inspection or otherwise.

9 Milner Street, London, SW3 2QB

Tel: 020 7589 3353

www.ashdownmarks.co.uk

ASHDOWN MARKS
PROPERTY CONSULTANTS