



D'oyley Street, London SW1X

ASHDOWN MARKS
PROPERTY CONSULTANTS

D'oyley Street, London SW1X

This wonderful family home, arranged over 4 floors, is ideally situated in a quiet street close to Sloane Square and the amenities the area has to offer.

The house benefits from three double bedrooms, three bathrooms, separate WC, reception room, kitchen, dining area and a private patio garden.

The property is located 0.1 miles from Sloane Square underground station (Circle and District Lines).

- Three Double Bedrooms
- Three Bathrooms
- Separate WC
- Reception Room
- Kitchen
- Dining Room
- Private Patio Garden
- Unfurnished
- EPC Rating D
- Close Proximity to Sloane Square Underground Station

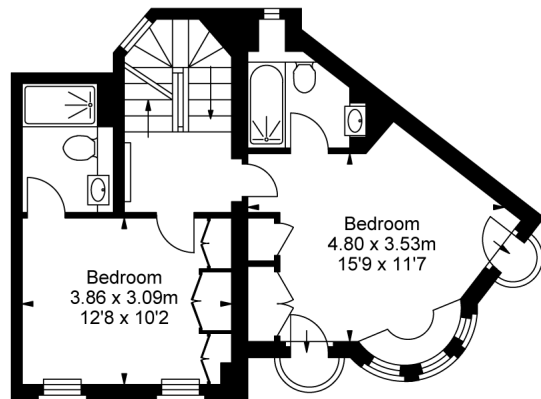
Price £2,085 pw

Unfurnished

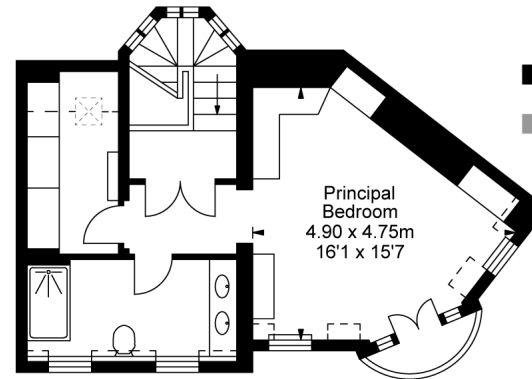




D'Oyley Street, SW1X



First Floor
Approximate Gross Internal Area
46.27 sq m / 498 sq ft

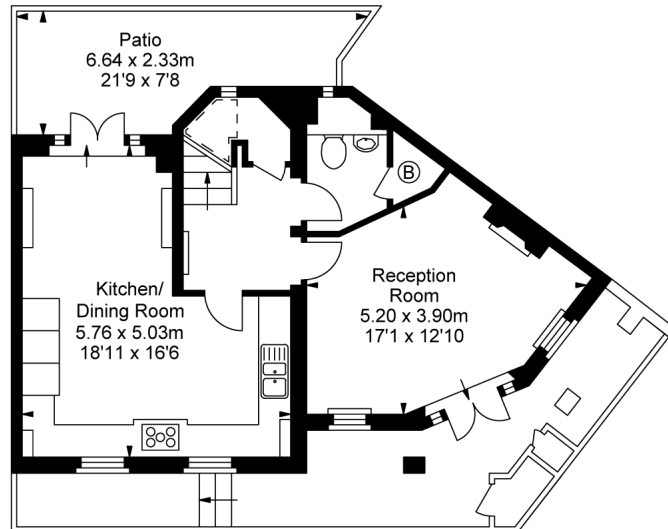


Second Floor
Approximate Gross Internal Area
42.53 sq m / 458 sq ft

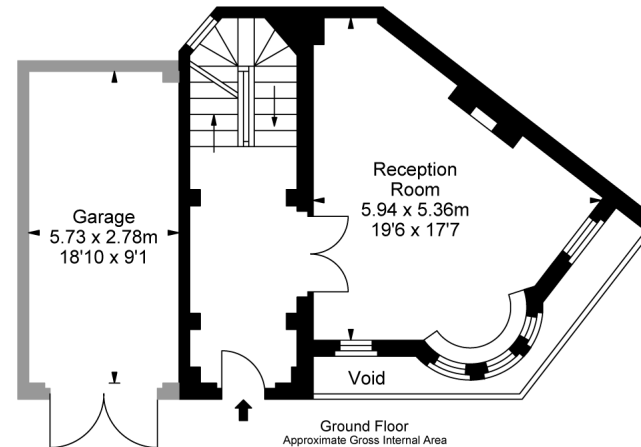
■ Approximate Gross Internal Area
180.25 sq m / 1,940 sq ft
■ Garage
16.40 sq m / 177 sq ft

Total Areas Shown on Plan
196.65 sq m / 2,117 sq ft

(Including restricted height
under 1.5m □ □ □ □)



Lower Ground Floor
Approximate Gross Internal Area
53.05 sq m / 571 sq ft



Ground Floor
Approximate Gross Internal Area
38.40 sq m / 413 sq ft

This plan is not to scale. It is for guidance only and not for valuation purposes.
All measurements and areas are approximate only, and have been prepared in accordance with the current edition of the RICS Code of Measuring Practice.
© Fulham Performance

Important notice: Ashdown Marks, their clients and any joint agents give notice that: 1: They are not authorised to make or give any representations or warranties in relation to the property either here or elsewhere, either on their own behalf or on behalf of their client or otherwise. They assume no responsibility for any statement that may be made in these particulars. These particulars do not form part of any offer or contract and must not be relied upon as statements or representations of fact. 2: Any areas, measurements or distances are approximate. The text, photographs and plans are for guidance only and are not necessarily comprehensive. It should not be assumed that the property has all necessary planning, building regulation or other consents and Ashdown Marks have not tested any services, equipment or facilities. Purchasers must satisfy themselves by inspection or otherwise.

9 Milner Street, London, SW3 2QB

Tel: 020 7589 3353

www.ashdownmarks.co.uk

ASHDOWN MARKS
PROPERTY CONSULTANTS