



Pont Street, Knightsbridge SW1X

ASHDOWN MARKS  
PROPERTY CONSULTANTS



## Pont Street, London SW1X

A stunning, rarely found FIRST floor maisonette with large entertaining rooms.

The flat features a wonderful drawing room with detailed mouldings and high ceilings. To the rear is also a generous beautifully refurbished kitchen/dining room opening onto a south facing balcony. The second floor provides three double bedrooms (one currently a dressing room) which all benefit from air conditioning.

- Drawing Room with Balcony
- Kitchen / Dining Room with Balcony
- Two Double Bedrooms with En Suite Bathrooms
- Bedroom Three / Dressing Room
- Utility Room
- Cloakroom
- Part Air Conditioning
- Lease: Expires 27th September 2189
- EPC: Rating C
- Council Tax: Band G

Service Charge: 15% of total outgoings.

Currently approx. £12,115 p.a for year ending 28<sup>th</sup> Sept 2025 – subject to annual review.

**Guide Price: £6,750,000**



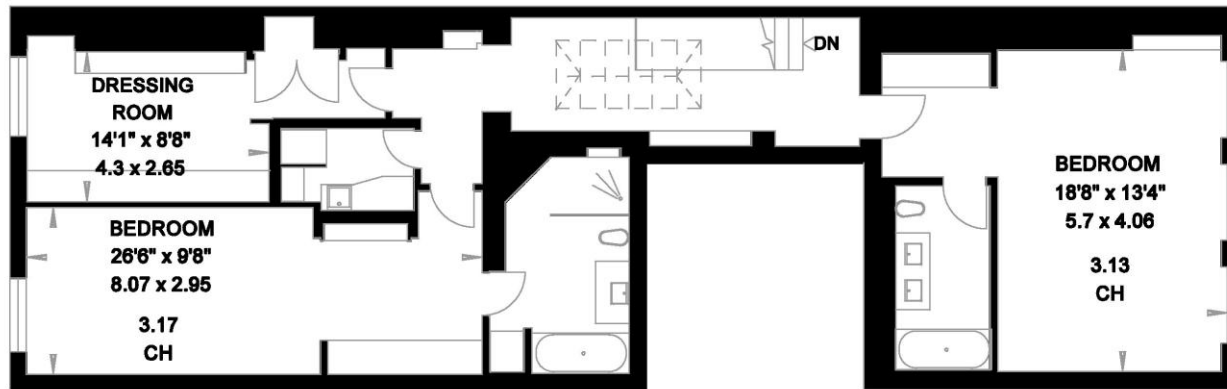
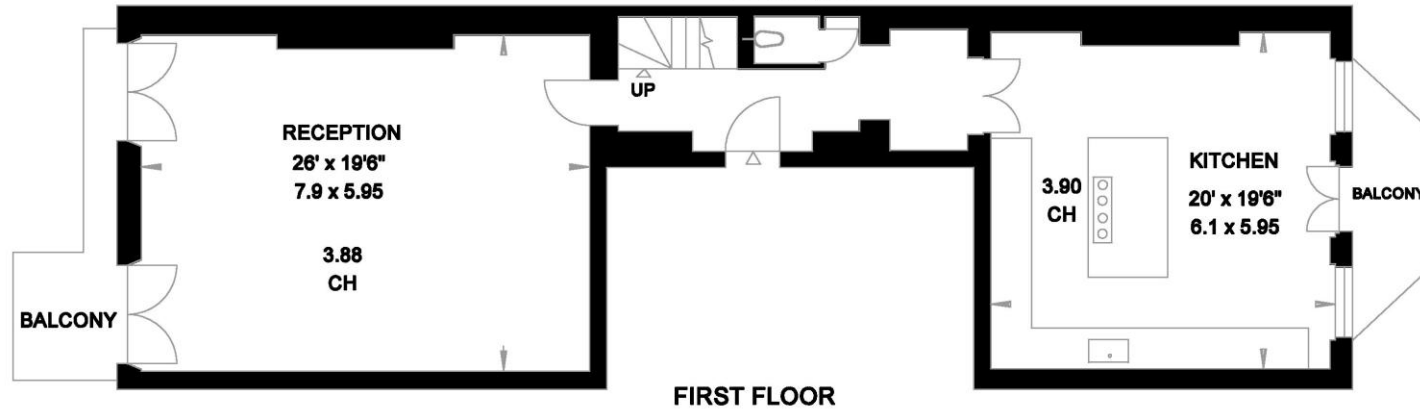




**PONT STREET  
LONDON SW1**



**Gross Internal Area = 214.6 sq. metres  
2310 sq. feet**



Important notice: Ashdown Marks, their clients and any joint agents give notice that: 1: They are not authorised to make or give any representations or warranties in relation to the property either here or elsewhere, either on their own behalf or on behalf of their client or otherwise. They assume no responsibility for any statement that may be made in these particulars. These particulars do not form part of any offer or contract and must not be relied upon as statements or representations of fact. 2: Any areas, measurements or distances are approximate. The text, photographs and plans are for guidance only and are not necessarily comprehensive. It should not be assumed that the property has all necessary planning, building regulation or other consents and Ashdown Marks have not tested any services, equipment or facilities. Purchasers must satisfy themselves by inspection or otherwise.

**9 Milner Street, London, SW3 2QB**

**Tel: 020 7589 3353**

**[www.ashdownmarks.co.uk](http://www.ashdownmarks.co.uk)**

**ASHDOWN MARKS**  
PROPERTY CONSULTANTS