



South Parade, Chelsea SW3

ASHDOWN MARKS  
PROPERTY CONSULTANTS



South Parade  
Chelsea, SW3 6LP

Recently refurbished this bright and airy studio apartment is located in a small secure building on the first floor.

It is available unfurnished and is positioned just a few minutes walk from the shops and amenities of the King`s Road.

- Studio Room
- First Floor
- Immaculate Presentation
- Newly Refurbished
- Quiet Location
- EPC - Rating C
- Council Tax - Band C

Unfurnished    Price £528 pw



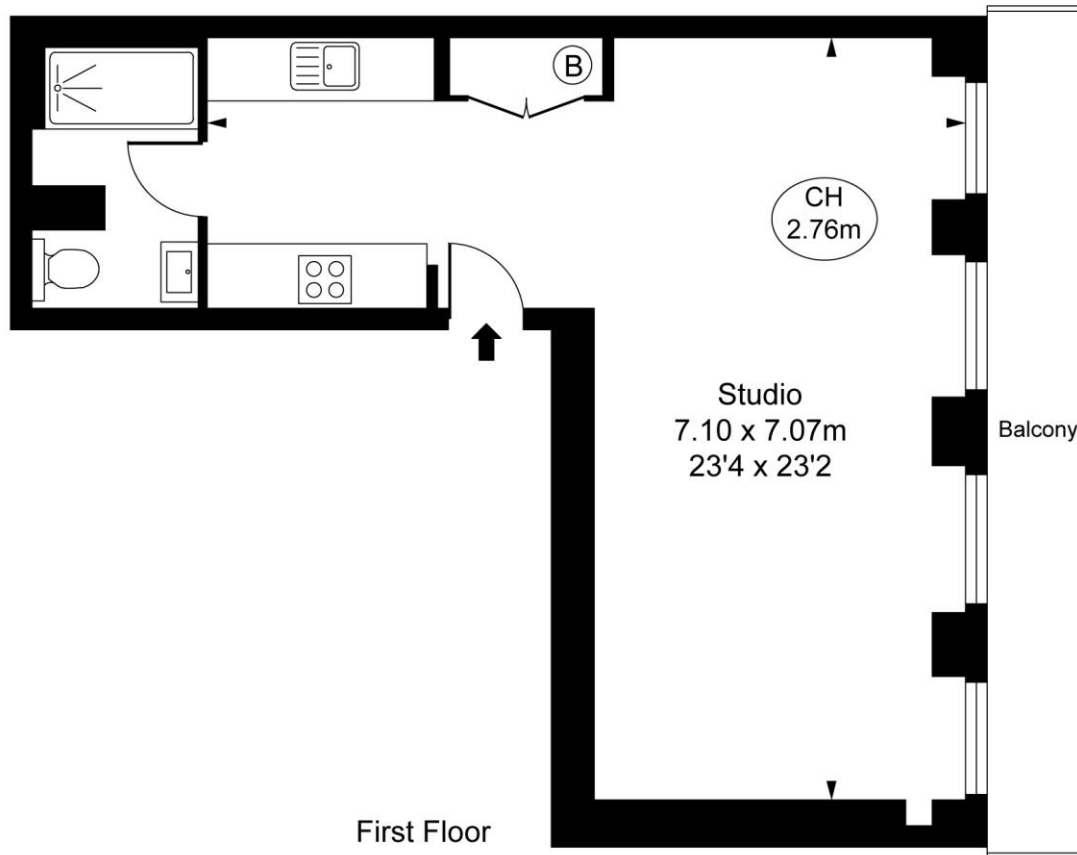




Elizabeth,  
Trafalgar Chambers, SW3

Approximate Gross Internal Area  
37.18 sq m / 400 sq ft

( CH = Ceiling Heights )



This plan is not to scale. It is for guidance and not for valuation purposes.  
All measurements and areas are approximate only, and have been prepared in accordance with the current edition of the RICS Code of Measuring Practice.  
© Fulham Performance

Important notice: Ashdown Marks, their clients and any joint agents give notice that: 1: They are not authorised to make or give any representations or warranties in relation to the property either here or elsewhere, either on their own behalf or on behalf of their client or otherwise. They assume no responsibility for any statement that may be made in these particulars. These particulars do not form part of any offer or contract and must not be relied upon as statements or representations of fact. 2: Any areas, measurements or distances are approximate. The text, photographs and plans are for guidance only and are not necessarily comprehensive. It should not be assumed that the property has all necessary planning, building regulation or other consents and Ashdown Marks have not tested any services, equipment or facilities. Purchasers must satisfy themselves by inspection or otherwise.

9 Milner Street, London, SW3 2QB

Tel: 020 7589 3353

[www.ashdownmarks.co.uk](http://www.ashdownmarks.co.uk)

**ASHDOWN MARKS**  
PROPERTY CONSULTANTS