



**ABSOLUTE**  
PROPERTY

Sopers House, Soper Road, Cuffley EN6 4RY

☎ 020 8882 8156 📠 020 8882 8155

✉ info@absolutepropertyagents.com

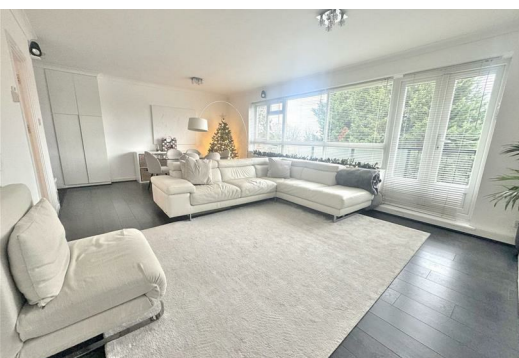
🌐 www.absolutepropertyagents.com



**Flat 23 Ashmead, London  
N14 4QX**

**£2,100 Per Month**

Absolute Property are delighted to offer this modern three bedroom flat located close to Oakwood's Piccadilly line tube station and the many shops of both Southgate and Cockfosters. This property has been well maintained by its current owners. Benefits include a modern fitted kitchen/breakfast room, spacious lounge/diner, modern fitted bathroom and guest WC, balcony area, double glazing and gas central heating. The property is available now. Call now for further information or to arrange a viewing.





Flat 23 Ashmead, London  
N14 4QX

ENTRANCE

Front door opening to

LOUNGE/DINER:

23.4 x 14.2 ( 7.01m.1.22m x 4.27m.0.61m )  
Coving to ceiling, wooden flooring, TV Socket, 2 x radiator, entry panel system, UKPVC double glazed window to side aspect, UKVC double glazed single door opening to balcony, doors to kitchen, hallway

KITCHEN:

11.6 x 10 ( 3.35m.1.83m x 3.05m)  
Range of eye and base level units, built in oven, gas hob and extractor, integrated dishwasher, stainless steel sink/drainer with mixer taps, UKPCS double glazed windows to side aspect, 1 x radiator, door to

UTILITY ROOM:

Sink, space for washing machine, UPVC double glazed window to side aspect

HALLWAY:

Further doors to bedroom, bathroom, guest WC

BEDROOM:

14.7 x 10.10 ( 4.27m.2.13m x 3.05m.3.05m )  
Furnished with wardrobes drawer unit and bed. 1 x radiator, UKPVC double glazed window to front aspect

BATHROOM:

3 piece suite comprising of low level flush, WC pedestal hand/wash basin with mixer taps both with shower attachment, shower cubicle, heated towel rail, ceiling spot lights, UKPVC double glazed frosted window

GUEST WC:

Comprises of low level flush WC, hand wash basin with mixer taps, UKPVC double glazed window to side aspect

BALCONY:

To side aspect

