



Glebe View,
49 Spring Meadows, Great Shefford, Berkshire, RG17 7EN



An extremely spacious, 1124sqft, first floor apartment with stunning countryside views situated in the pretty village of Great Shefford.

114 High Street, Hungerford, Berkshire RG17 0LU

Telephone: 01488 683334

Email: sales@nyeandco.co.uk

www.nyeandco.co.uk

Shared entrance area with stairs up to the apartment | Spacious entrance hall | Utility room | Kitchen/Breakfast room

Living room with open fire and balcony with stunning views | Master bedroom with en-suite bathroom and dressing area

Double bedroom | Family shower room | Stunning views | Double glazing | Electric heating | Long lease of 971 years

Guide Price £275,000

SITUATION

The property is situated in the village of Great Shefford, in the North Wessex Downs' Area of Outstanding Natural Beauty. Great Shefford itself has a primary school, shop and church and the pretty River Lambourn runs through the heart of the village. Great Shefford is conveniently located approximately 2 miles from the M4 (Junction 14) and is approximately 9 miles from Newbury and 14 miles from Swindon. Further day to day amenities are available in Hungerford, approximately 5 miles away.

DESCRIPTION

A two bedroom first floor apartment with 1124sqft of space and gorgeous views over the countryside. Accommodation comprises spacious entrance hall, useful utility room, kitchen/breakfast

room and living room with open fire and a balcony boasting stunning views. There is a master bedroom with en-suite bathroom, dressing area and Juliette balcony, double bedroom with fitted wardrobes and family shower room. The property has double glazing and electric heating.

There is parking for two cars, one of these is a covered space (car port).

Viewing strongly recommended. This property is being sold with no onward chain.

Lease length – 999 years from 1997.

No service charge or ground rent.

COUNCIL TAX

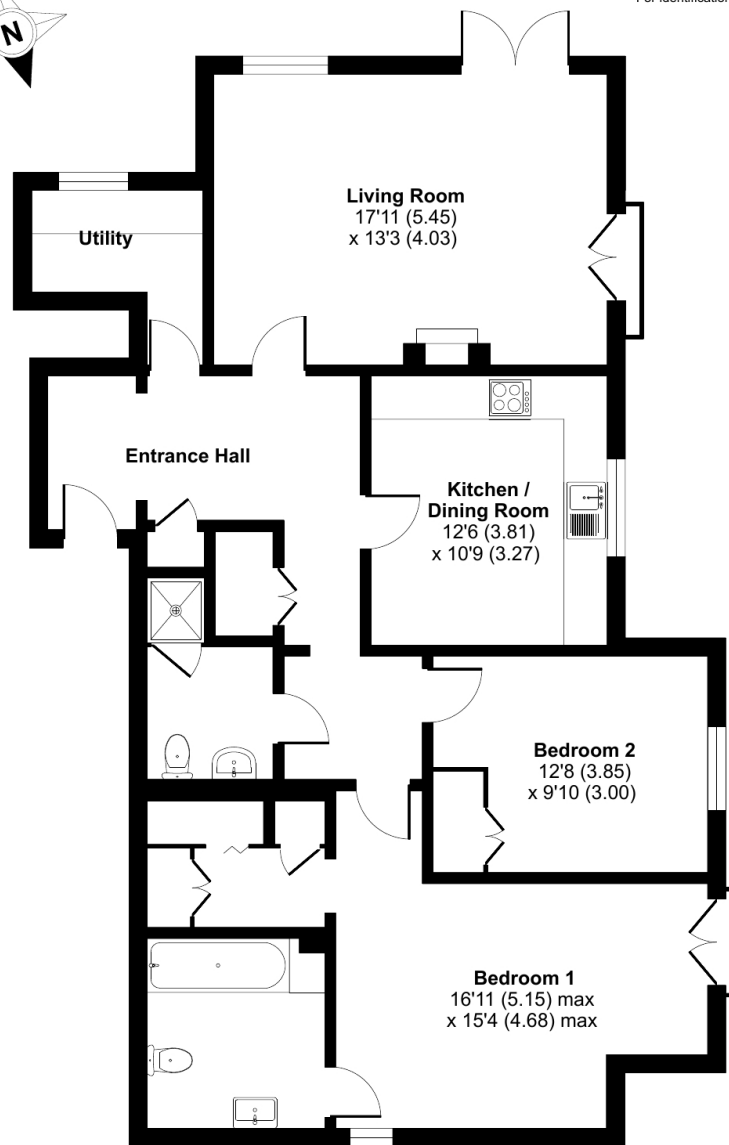
Band D – West Berkshire

Score	Energy rating	Current	Potential
92+	A		
81-91	B		
69-80	C		74 C
55-68	D	59 D	
39-54	E		
21-38	F		
1-20	G		

Spring Meadows, Great Shefford, Hungerford, RG17

Approximate Area = 1124 sq ft / 104.4 sq m

For identification only - Not to scale



FIRST FLOOR

Whilst we at **Nye & Co** estate agents endeavour to ensure the accuracy of property details produced and displayed, we have not tested any apparatus, equipment, fixtures and fittings or services and so cannot verify that they are connected, in working order or fit for the purpose. Neither have we had sight of the legal documents to verify the Freehold or Leasehold status of any property. A Buyer is advised to obtain verification from their solicitor and/or surveyor. A Buyer must check the availability of any property and make an appointment to view before embarking on any journey.



114 High Street, Hungerford, Berkshire RG17 0LU

Telephone: 01488 683334

Email: sales@nyeandco.co.uk

www.nyeandco.co.uk

