

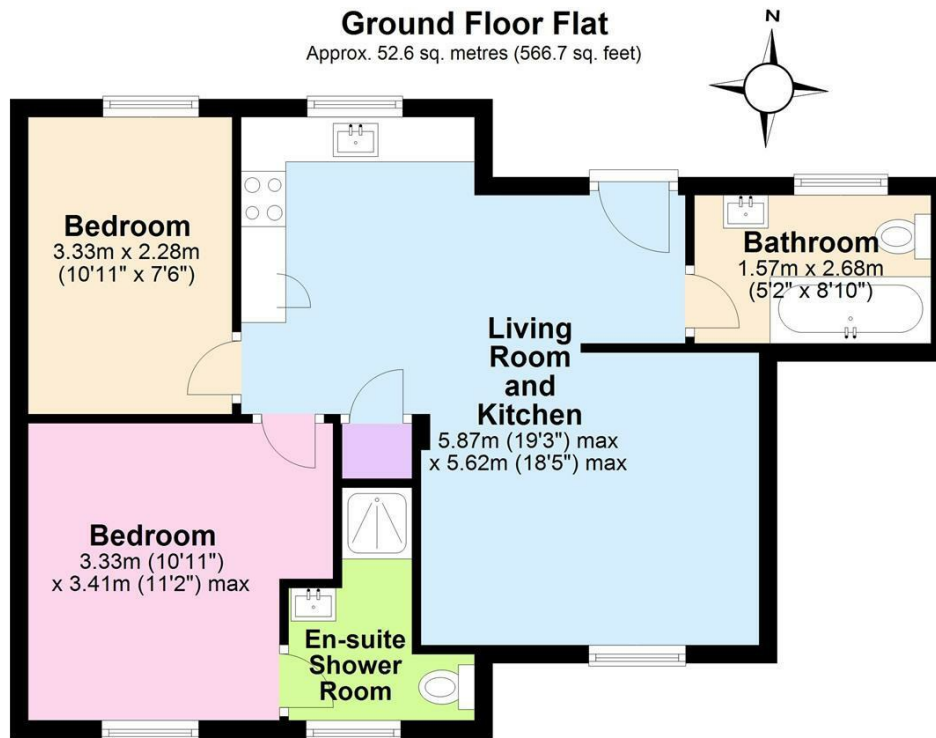


MERLIN HOUSE CHURCH STREET HUNGERFORD, RG17 0JG

£1,200 PER MONTH

A lovely ground floor apartment located in the heart of Hungerford just a few moments walk from the High Street and railway station. The accommodation includes a bright and airy open plan Living Room and high quality kitchen complete with integrated appliances and painted finish cabinets complimented by woodblock work surfaces. There is a master bedroom with en-suite shower room and family bathroom with shower over bath. The property has gas central heating and double glazing. Outside there are two parking spaces and a useful store for bins and bikes. Unfurnished. Available Now.





Total area: approx. 52.6 sq. metres (566.7 sq. feet)

This floor plan is for illustrative purposes only, areas, measurements and distances given are approximate.
Any prospective purchaser should satisfy themselves as to precise dimensions.
Plan produced using PlanUp.

Flat B, Merlin House, Church Street, Hungerford



Energy Efficiency Rating		Current	Potential
Very energy efficient - lower running costs			
(92 plus) A			
(81-91) B			
(69-80) C		68	72
(55-68) D			
(39-54) E			
(21-38) F			
(1-20) G			
Not energy efficient - higher running costs			
England & Wales		EU Directive 2002/91/EC	

Agents Note: Whilst every care has been taken to prepare these particulars, they are for guidance purposes only. All measurements are approximate and are for general guidance purposes only and whilst every care has been taken to ensure their accuracy, they should not be relied upon and potential buyers/tenants are advised to recheck the measurements

Hungerford Lettings
114 High Street
Hungerford
Berkshire
RG17 0LU

01488 683334
lettings@nyeandco.co.uk
<https://www.nyeandco.co.uk/>

