



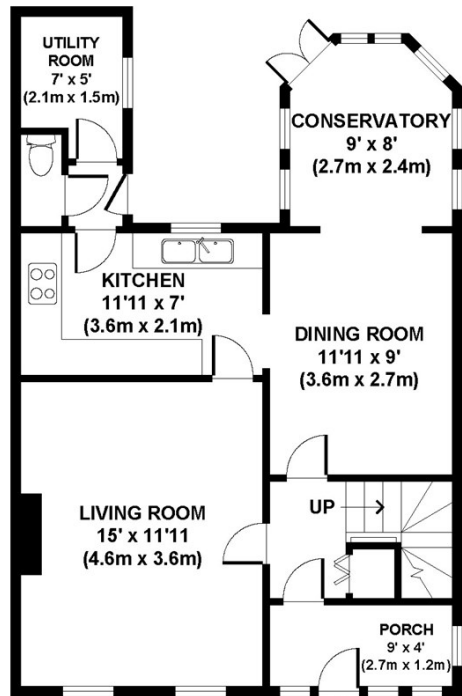
17 ATHERTON CRESCENT

BERKSHIRE, RG17 0LE

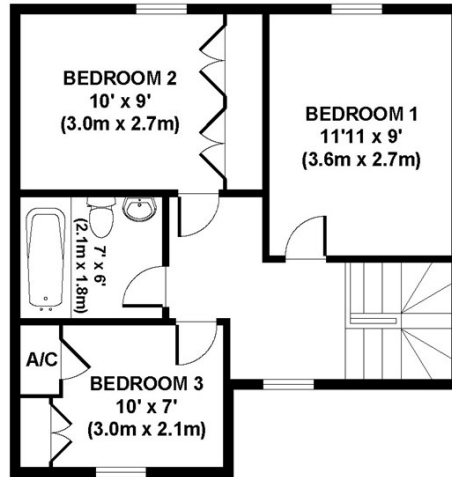
£1,500 PCM

A three bedroom semi-detached house, built in the 1920s in good decorative order. Accommodation comprises entrance porch, entrance hall, living room with electric fire, kitchen with appliances, dining room, conservatory and useful utility area and downstairs cloakroom. Upstairs there are two double bedrooms, single bedroom and family bathroom with shower over bath. Outside there is driveway parking for four cars and side access to the lovely garden which is a particular feature of the property. No pets. Unfurnished. Available Now



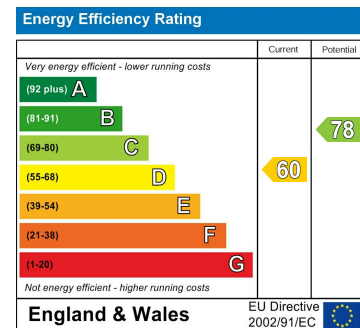


GROUND FLOOR
GROSS INTERNAL
FLOOR AREA 604 SQ FT



FIRST FLOOR
GROSS INTERNAL
FLOOR AREA 433 SQ FT

APPROX. GROSS INTERNAL FLOOR AREA 1037 SQ FT / 96 SQ M
Floorplans are for identification and guideline purposes only, not to scale.
Compliant with RICS code of measuring practice.
Floorplans supplied by www.draftingfloorplan.com



Agents Note: Whilst every care has been taken to prepare these particulars, they are for guidance purposes only. All measurements are approximate and are for general guidance purposes only and whilst every care has been taken to ensure their accuracy, they should not be relied upon and potential buyers/tenants are advised to recheck the measurements

Hungerford Lettings
114 High Street
Hungerford
Berkshire
RG17 0LU

01488 683334
lettings@nyeandco.co.uk
<https://www.nyeandco.co.uk/>

