



### High Road, South Woodford, E18

**\*\*MODERN ONE BEDROOM FLAT IN SOUTH WOODFORD\*\* \*\* CLOSE TO LOCAL SHOPS AND AMENITIES\*\* \*\* AVAILABLE 3RD AUGUST ON A MINIMUM 12 MONTHS TENANCY \*\* \*\* EPC RATING C\*\* \*\* COUNCIL TAX BAND: B\*\***

**Rent: £1,495 - Monthly**



# Platinum House, South Woodford, E18

## Reception 1

5.79m (19') x 2.74m (9')



## Kitchen



## Bedroom 1

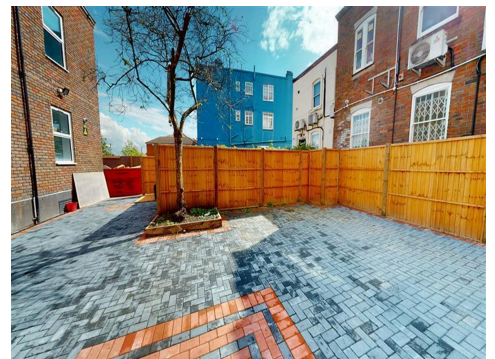
3.94m (12'11) x 2.67m (8'9)



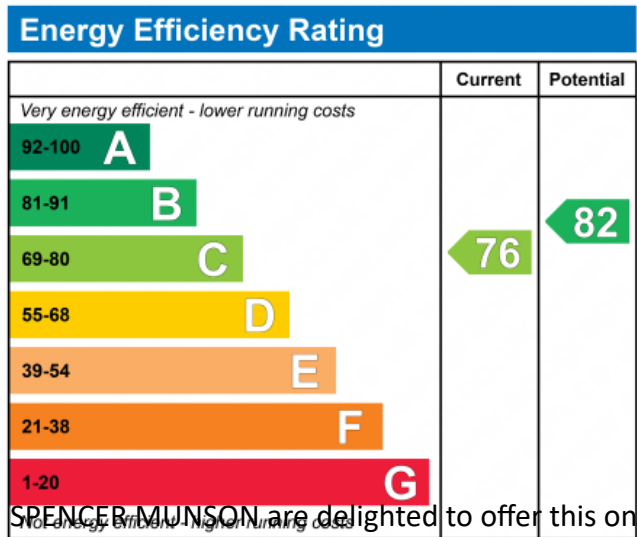
## Bathroom



## Courtyard Garden



## Double Glazing



SPENCER MUNSON are delighted to offer this one bedroom flat in a development in South Woodford. It is in a prime location and walking distance to George Lane which benefits from local shops and amenities. Walking distance to South Woodford's central line station ( zone 4 ). The property is finished to a high standard and benefits from an open plan living room / kitchen with fitted appliances. Parking not included, please ask one of our agents for more information. EPC rating : C Council Tax band : B. Available 3rd August 2025 on a minimum 12 months tenancy on an unfurnished basis.

England & Wales

2002/91/EC



# Platinum House, South Woodford, E18

## **Disclaimer**

These particulars are intended to give a fair and substantially correct overall description for the guidance of intending tenants/purchasers and do not constitute an offer or part of a contract. Prospective tenants/purchasers and/or lessees should seek their own professional advice. All descriptions, dimensions, reference to condition, fixtures, fittings and necessary permissions for use and occupation and other details are given in good faith and are believed to be correct. However, intending tenants/purchasers should not rely on them as statements or representations of fact, but must satisfy themselves by inspection or otherwise as to the correctness of each of them. Fixtures and fittings shown in pictures and on viewings may well not be included in any tenancy/sale and any prospective tenant/purchaser must clarify this for themselves. All measurements and floorplans are approximate and produced as a guide in good faith. Please note that some of the furniture and decor items shown in these images have been digitally added using AI technology for illustrative purposes. The actual property may differ in appearance. Prospective buyers or renters are encouraged to visit the property in person to get an accurate representation.