



Victoria Road, London, E18

FOUR BEDROOM DETACHED HOME ** ** BEAUTIFULLY PRESENTED** ** FOUR DOUBLE BEDROOMS** **TWO BATHROOMS** ** LARGE KITCHEN/DINER** ** STUDIO IN THE GARDEN WITH SHOWER ROOM** * AVAILABLE NOW ON A MINIMUM 12 MONTHS TENANCY ** EPC RATING: TBC COUNCIL TAX BAND : E

Rent: £3,000 - Monthly



Victoria Road, London, E18

Reception 1



Reception 2



Kitchen



Bedroom 1



Bedroom 2



Bedroom 3



Bedroom 4

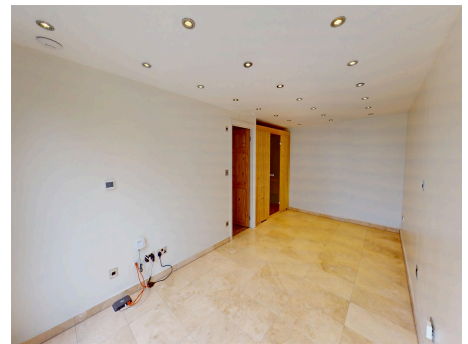


Victoria Road, London, E18

Bathroom



Bathroom 2



Spencer Munson are pleased to offer you this Stunning four bedroom detached home to rent, This rarely available property consists of a living room to front, with a large extended Kitchen diner to rear, perfect for entertaining. You also have a family downstairs bathroom, Three double bedrooms on the first floor and a Master bedroom on the second floor with its very own En-Suite. The property boasts on having a large garden, with its very own studio with Sauna and shower room. Short walk to South wood Train station and its local shops and amenities. This property is not to be missed and is available now. EPC: TBC Council tax band : E

Victoria Road, London, E18

Disclaimer

These particulars are intended to give a fair and substantially correct overall description for the guidance of intending tenants/purchasers and do not constitute an offer or part of a contract. Prospective tenants/purchasers and/or lessees should seek their own professional advice. All descriptions, dimensions, reference to condition, fixtures, fittings and necessary permissions for use and occupation and other details are given in good faith and are believed to be correct. However, intending tenants/purchasers should not rely on them as statements or representations of fact, but must satisfy themselves by inspection or otherwise as to the correctness of each of them. Fixtures and fittings shown in pictures and on viewings may well not be included in any tenancy/sale and any prospective tenant/purchaser must clarify this for themselves. All measurements and floorplans are approximate and produced as a guide in good faith. Please note that some of the furniture and decor items shown in these images have been digitally added using AI technology for illustrative purposes. The actual property may differ in appearance. Prospective buyers or renters are encouraged to visit the property in person to get an accurate representation.