



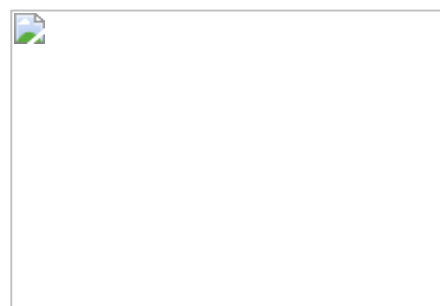
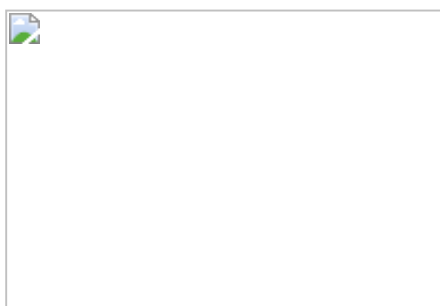
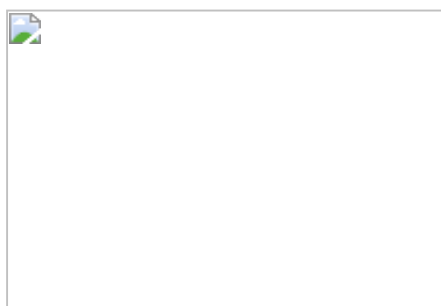
WHERE STANDARDS MATTER

Spencer Munson
41 High Road
South Woodford E18 2QP

Tel: 020 8989 3331

swoodford@spencermunson.co.uk

Website: spencermunson.co.uk



Gerry Raffles Square, Stratford, E15

**** ** Pictures to follow ** One bedroom apartment situated within Gerry Raffles Square ** **
Photos to follow ** ** Lift access** ** Fantastic location ** ** Moments from Stratford Station
and Westfield ** ** Easy access into the city ** ** Available 19th June 2024 ** ** Furnished ** **
EPC Rating: C**

Rent: £1,595 - Monthly



Gerry Raffles Square, Stratford

Reception 1

2.87m (9'5) x 4m (13'1)



Kitchen

2.55m (8'4) x 2.03m (6'8)



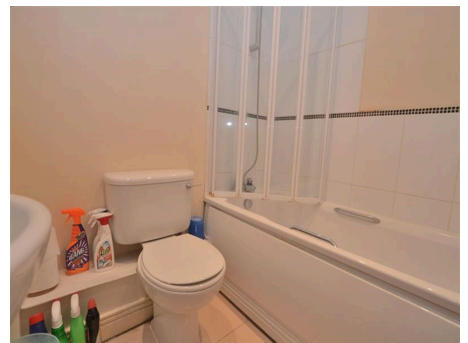
Bedroom 1

3.97m (13'0) x 4.35m (14'3)



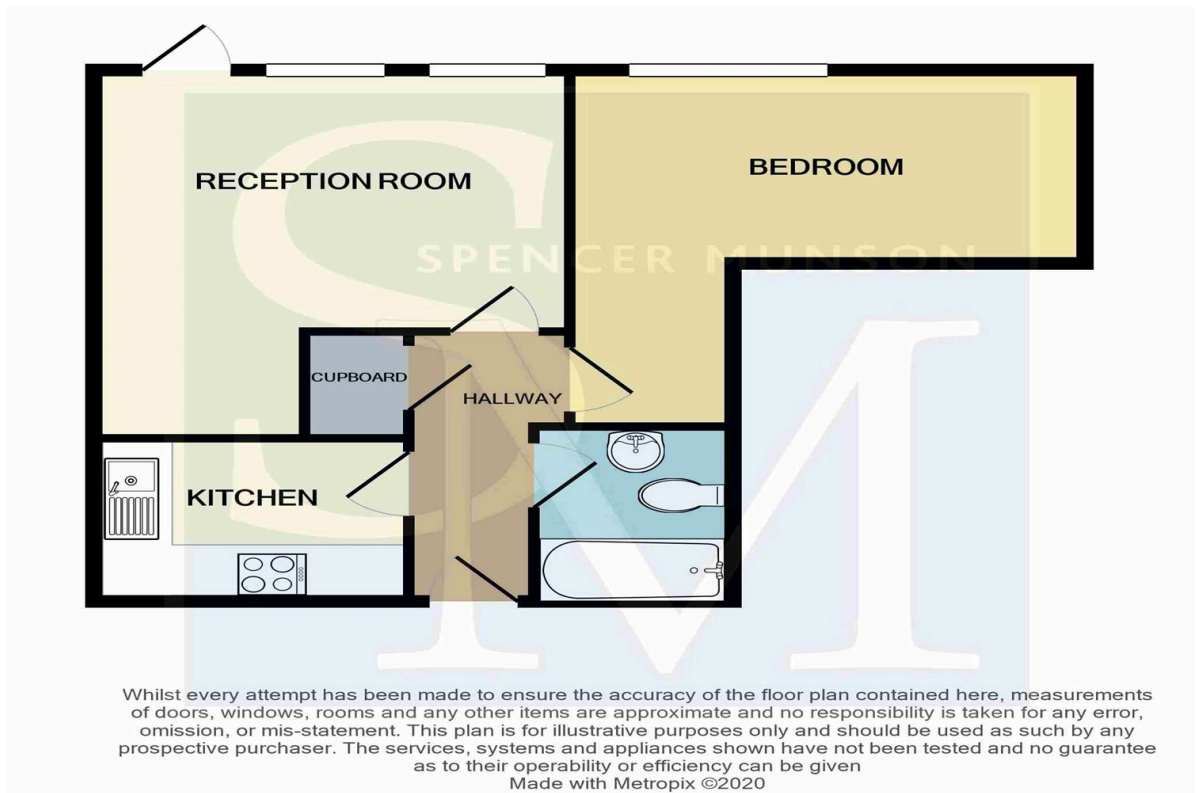
Bathroom

1.68m (5'6) x 1.99m (6'6)



**** Pictures to follow **** Fantastic one bedroom apartment situated within the highly sought after Gerry Raffle Square development, located in central Stratford and within a moments walk of Central Stratford Stations and Westfield shopping centre. The apartment itself comprises a good sized lounge, separate fitted kitchen, double bedroom and modern bathroom. The property benefits from lift access, views over Stratford from the Juliette balcony, easy access to the city (Liverpool Street in 10 minuets & Holborn in 20 minuets) and 24 hour tube service on the weekends. Property is available from 19th June 2024 on a furnished basis. EPC Rating: C / Council tax band : B

Gerry Raffles Square, Stratford



Disclaimer

These particulars are intended to give a fair and substantially correct overall description for the guidance of intending tenants/purchasers and do not constitute an offer or part of a contract. Prospective tenants/purchasers and/or lessees should seek their own professional advice. All descriptions, dimensions, reference to condition, fixtures, fittings and necessary permissions for use and occupation and other details are given in good faith and are believed to be correct. However, intending tenants/purchasers should not rely on them as statements or representations of fact, but must satisfy themselves by inspection or otherwise as to the correctness of each of them. Fixtures and fittings shown in pictures and on viewings may well not be included in any tenancy/sale and any prospective tenant/purchaser must clarify this for themselves. All measurements and floorplans are approximate and produced as a guide in good faith.