

OPENING DOORS SINCE 1843

Loveitts est. 1843
THE ESTATE AGENTS

The Outwoods, Hinckley, LE10 2UD
£585,000



3



3



2



The Outwoods Hinckley, LE10 2UD

A STUNNING 3/4 BEDROOM, BRAND NEW HOME SET WITHIN A QUIET PRIVATE COURTYARD LOCATION WITH BURBAGE COMMON AND WOODS ALMOST ON YOUR DOORSTEP. Plots 1, 2 and 3 at Burbage Wood, comprises: Hallway leading to an impressive fully equipped kitchen/dining/living area which includes an Integrated Dishwasher, a Nespresso Coffee Machine and Quartz worktops. Bi-fold doors lead out to a lovely patio area, which perfectly blends the indoors with the tranquil outside space. The Ground floor also comprises a sitting room, utility room with fitted units and WC with fabulous custom-made contemporary vanity units. The First Floor comprises; master bedroom with dressing area and en-suite with custom-made contemporary vanity units. Also to the first floor is a further bedroom and Study/Bedroom 4, along with the main family bathroom with separate shower cubicle - again with custom-made contemporary vanity units. The Top floor comprises Bedroom 2 with a fabulous size en-suite.

This property has been built to a very high specification and finish, there are three of these beautiful homes available, which benefit from underfloor heating to Ground Floor and First Floor and Flooring throughout.

This is an ideal family home, which forms part of this beautiful prestigious development of only 5 homes altogether. This property comes with two private driveway parking spaces and Plot 3 benefits from useful barn storage. These homes are perfectly positioned between Burbage village and Hinckley town centre, both within easy walking distance.





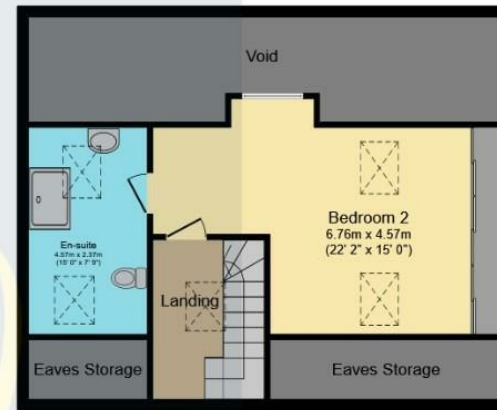
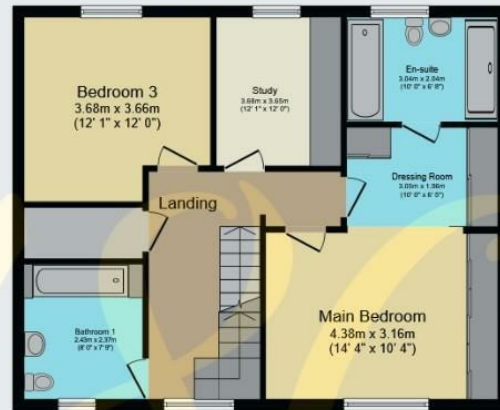
- VIEWING ABSOLUTELY ESSENTIAL - BOOK YOUR APPOINTMENT TODAY!!
- VIEWING IS ABSOLUTELY ESSENTIAL
- STUNNING & EXTREMELY SPACIOUS BRAND NEW HOME
- READY TO MOVE INTO
- STUNNING OPEN PLAN LIVING KITCHEN
- MASTER BEDROOM & BEDROOM 2 WITH ENSUITE
- CLOSE PROXIMITY TO BURBAGE COMMON AND WOODS
- POPULAR LOCATION BETWEEN BURBAGE VILLAGE & HINCKLEY TOWN CENTRE
- HIGH SPECIFICATION THROUGHOUT
- GOOD SIZED GARDEN



Floor Plan

Area Map

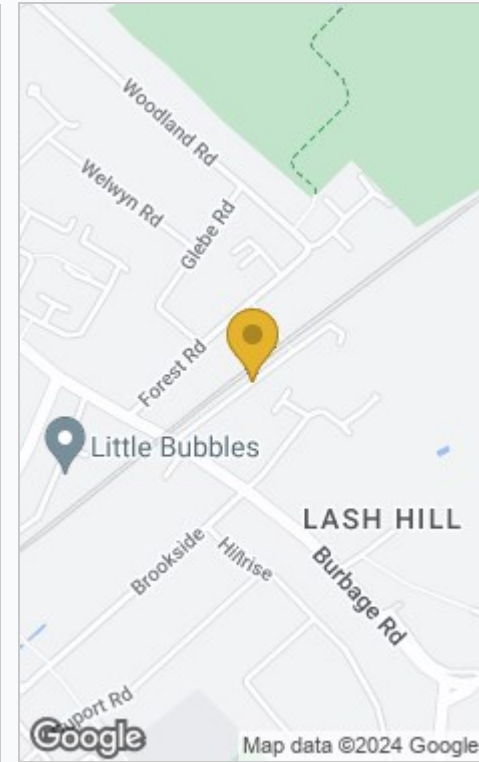
Loveitts est. 1843



Ground Floor 1


First Floor 1

Second Floor 1



Total floor area 161.4 m² (1738 sq.ft.) approx

This plan is for illustration purposes only and may not be representative of the property. Plan not to scale. Powered by PropertyBox

Energy Efficiency Rating		Current	Potential
Very energy efficient - lower running costs			
(92 plus) A			
(81-91) B			
(69-80) C			
(55-68) D			
(39-54) E			
(21-38) F			
(1-20) G			
Not energy efficient - higher running costs			
England & Wales		EU Directive 2002/91/EC 	

These particulars, whilst believed to be accurate are set out as a general outline only for guidance and do not constitute any part of an offer or contract. Intending purchasers should not rely on them as statements of representation of fact, but must satisfy themselves by inspection or otherwise as to their accuracy. No person in this firm's employment has the authority to make or give any representation or warranty in respect of the property.