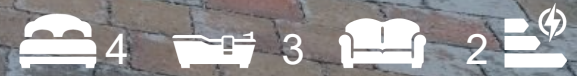




Plot 2 Woodlands Road, Bedworth, CV12 0AD

£487,500





Plot 2 Woodlands Road

Bedworth, CV12 0AD

£487,500

- BRAND NEW HOME
- 10 year LABC Warranty
- Garage & driveway
- FLOORING INCLUDED!
- STAMP DUTY PAID UP TO A VALUE OF £11,750! TERMS & CONDITIONS APPLY
- 4 bedrooms
- Small development of only 9 homes
- WARDROBES & UPGRADE KITCHEN INCLUDED!

■ 2 EN-SUITES

This impressive 4 bedroom detached home is picture-perfect family living. The ground floor hosts a spacious open-plan kitchen / dining / family room for the whole family to enjoy throughout the day. A bespoke, integrated kitchen leads on to a separate utility room and French doors take you out to the rear garden. The hallway also leads onto a large living room, a study and a WC.

Upstairs, the spacious master suite includes an en-suite shower room and a dressing room whilst bedroom 2 also benefits from it's own en-suite and the remaining bedrooms are served by a family bathroom.

The home is perfectly completed with a beautifully landscaped front garden with a private driveway, garage and path leading to the front door.

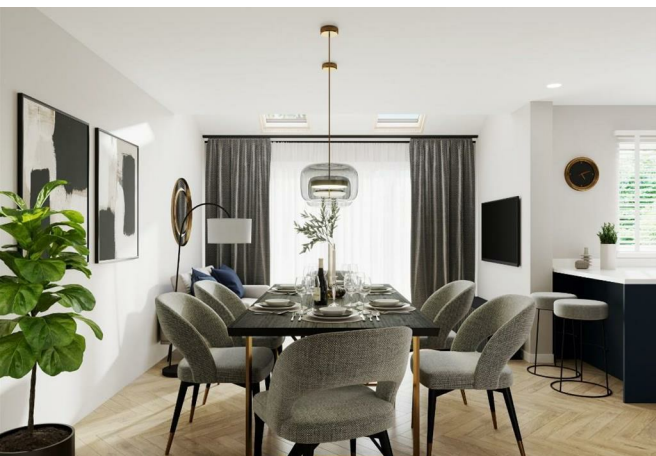
Please note: There is an annual estate charge of £410.

Viewing by appointment only, book your appointment now! 024 7634 7676

Loveitts will pass any information submitted by the buyer directly to Cartwright Homes

Services: Mains Gas, Electricity & Water & Sewerage will be supplied to the property (No tests have been carried out, therefore, we are unable to confirm connection).

■ READY TO MOVE INTO!

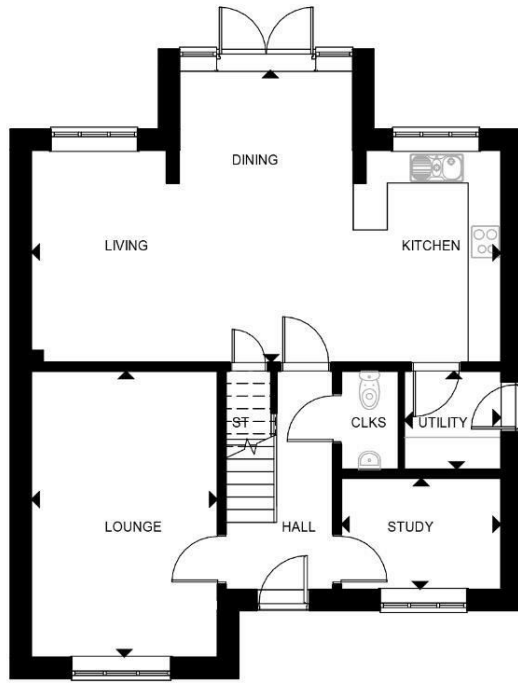


Living / Kitchen / Dining	28'1" x 17'6" (8.563 x 5.335)
Lounge	11'1" x 17'1" (3.398 x 5.225)
Study	9'6" x 6'8" (2.915 x 2.035)
Utility Room	5'9" x 5'10" (1.768 x 1.803)
Bedroom 1	11'3" x 10'2" (3.448 x 3.110)
Dressing Room	12'8" x 7'11" (3.885 x 2.418)
Bedroom 2	11'3" x 11'6" (3.448 x 3.520)
Bedroom 3	9'8" x 11'6" (2.970 x 3.515)
Bedroom 4	9'8" x 9'1" (2.970 x 2.783)



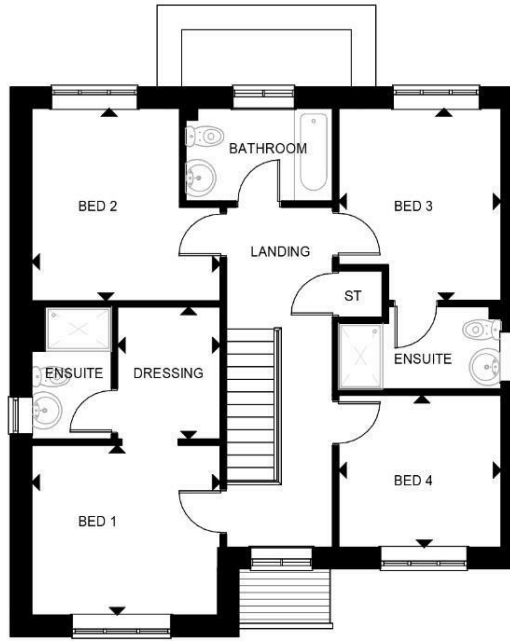


Floor Plans



Ground Floor

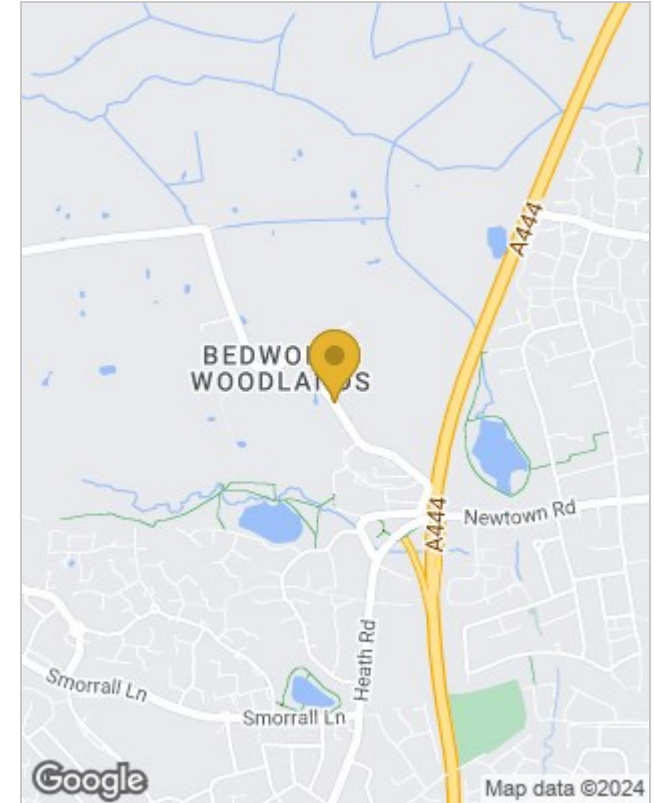
Living / Kitchen / Dining	8563mm x 5335mm
Lounge	3398mm x 5225mm
Study	2915mm x 2035mm
Utility	1768mm x 1803mm



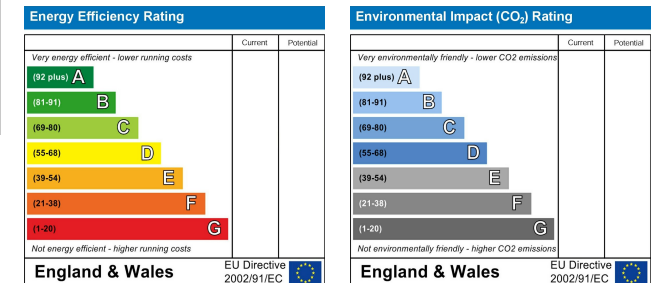
First Floor

Bedroom 1	3448mm x 3110mm
Dressing	1885mm x 2418mm
Bedroom 2	3448mm x 3520mm
Bedroom 3	2970mm x 3515mm
Bedroom 4	2970mm x 2783mm

Location Map



Energy Performance Graph



Viewing

Please contact our Nuneaton Office on 024 7634 7676

if you wish to arrange a viewing appointment for this property or require further information.