



SAXON SHORE
— ESTATE AGENTS —



20 Beech Close, Faversham, ME13 7SL

Offers in excess of £365,000

Introducing this three bedroom, semi detached house on Beech Close in Faversham brought to market with no onward chain. In need of some modernisation, this property has great potential.

Accommodation spans across two floors and consists of an entrance hall, spacious, open plan lounge/dining room, with patio doors that lead onto a conservatory, a well proportioned kitchen that opens out to the garden, and a W/C to the ground floor.

Upstairs are three good sized bedrooms and a shower room.

Outside to the front is a garden, and both a garage and a driveway providing ample parking. To the rear is an established garden, mainly laid to lawn with flower beds running down each side.

Entrance Hall
9'0" x 11'7" (2.75 x 3.54)



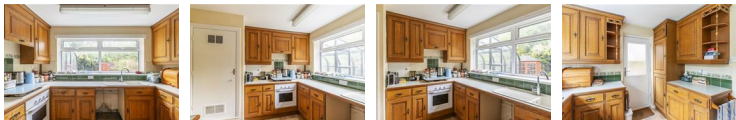
Lounge/Diner
11'1" x 21'5" (3.4 x 6.54)



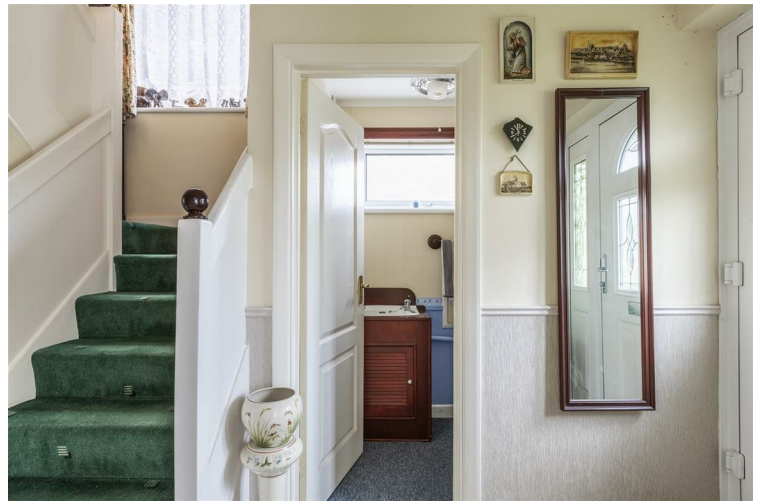
Conservatory
11'1" x 6'6" (3.4 x 2)



Kitchen
10'9" x 9'10" (3.29 x 3)



WC
3'9" x 5'3" (1.16 x 1.61)



Landing

Bedroom 1
11'1" x 11'6" (3.4 x 3.51)



Bedroom 2
11'1" x 9'10" (3.4 x 3.02)



Bedroom 3
6'2" x 9'10" (1.89 x 3)



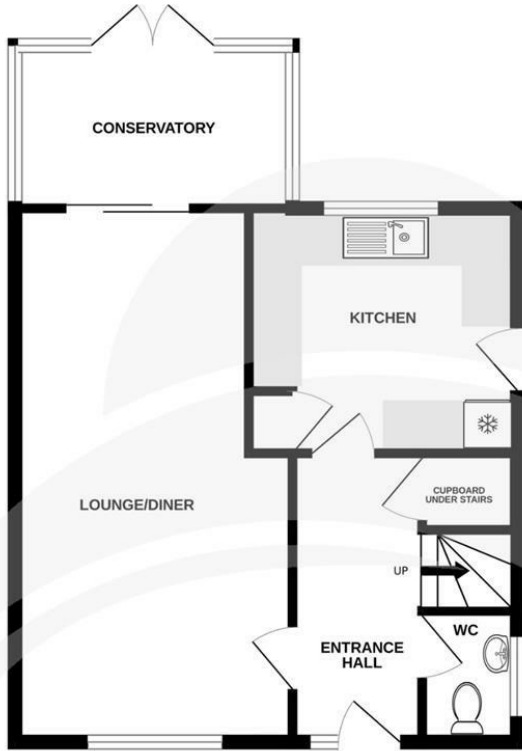
Shower Room
9'0" x 5'7" (2.75 x 1.72)



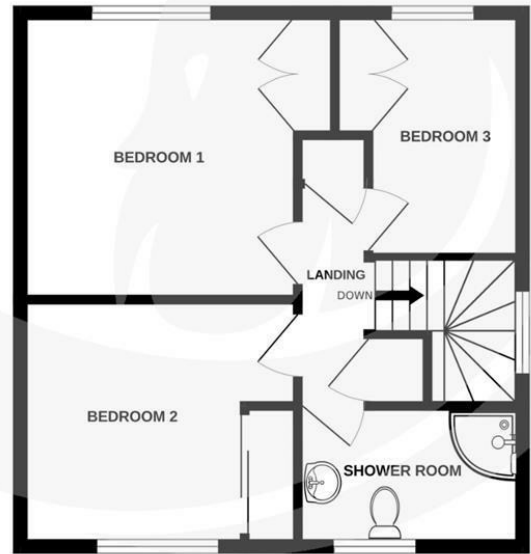
Garden



GROUND FLOOR
47.0 sq.m. (506 sq.ft.) approx.



1ST FLOOR
40.2 sq.m. (433 sq.ft.) approx.



TOTAL FLOOR AREA : 87.2 sq.m. (939 sq.ft.) approx.

Whilst every attempt has been made to ensure the accuracy of the floorplan contained here, measurements of doors, windows, rooms and any other items are approximate and no responsibility is taken for any error, omission or mis-statement. This plan is for illustrative purposes only and should be used as such by any prospective purchaser. The services, systems and appliances shown have not been tested and no guarantee as to their operability or efficiency can be given.
Made with Metropix ©2025

