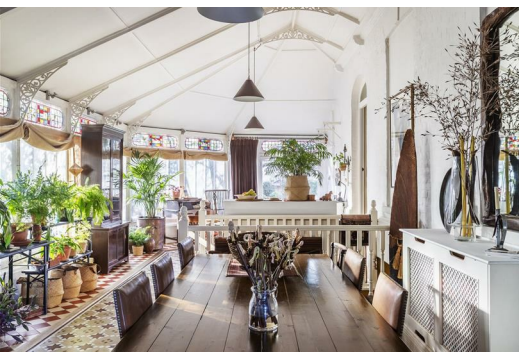




**SAXON SHORE**  
— ESTATE AGENTS —



## **1 The Mount, London Road, Faversham, ME13 8TH**

### **Offers in excess of £400,000**

Introducing this well presented, two bedroom, split level apartment in highly sought after "The Mount" on London Road in Faversham. Packed full of original features alongside all modern convenience, this property isn't to be missed!

To the ground floor accommodation comprises an entrance hall, a double bedroom with built in wardrobe, a modern shower room, spacious living room with floor to ceiling bay window with french doors that open out to the garden and a statement fireplace, and a stunning, fully heated conservatory/garden room with stained glass windows.

Downstairs on the lower ground floor is double bedroom, another modern shower room and a good sized, open plan kitchen/dining room.

Outside is a private, gated car park with two allocated spaces, bike shed and an expansive communal garden.

Don't miss your chance to make this unique property your new home, contact us today to arrange a viewing!



Communal Entrance Hall



Entrance Hall

Living Room  
28'10" x 13'5" (8.8 x 4.1)



Bedroom 2  
10'5" x 13'5" (3.2 x 4.1)



Shower Room 2  
5'10" x 5'6" (1.8 x 1.7)



Conservatory / Garden Room  
37'0" x 14'9" (11.3 x 4.5)



Dining Room / Kitchen  
27'0" x 13'5" (8.23 x 4.09)



Bedroom 1  
13'9" x 10'2" (4.2 x 3.1)



Shower Room 1  
8'8" x 7'10" (2.65 x 2.4)



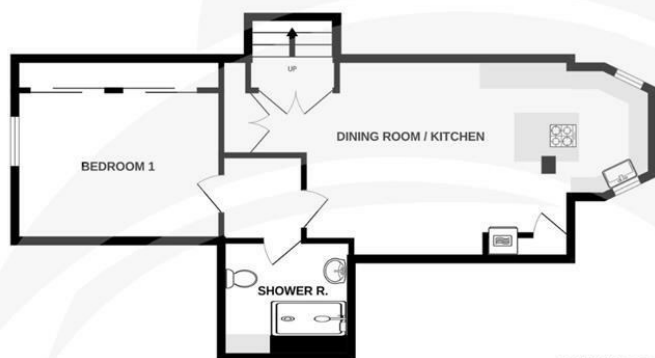
Front Garden



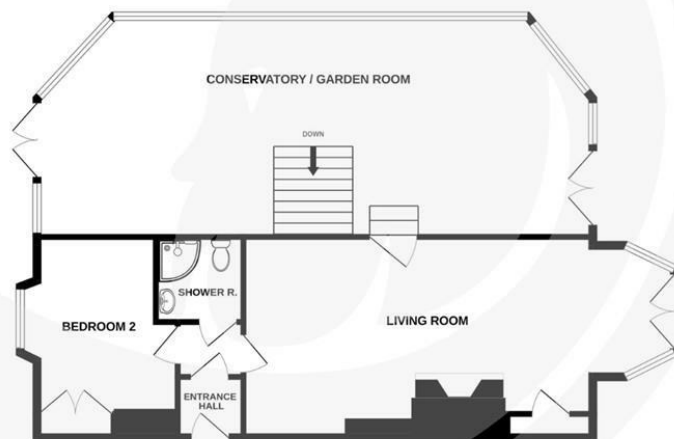
Communal Back Garden



LOWER FLOOR  
54.8 sq.m. (590 sq.ft.) approx.



GROUND FLOOR  
95.8 sq.m. (1032 sq.ft.) approx.



TOTAL FLOOR AREA : 150.6 sq.m. (1621 sq.ft.) approx.

Whilst every attempt has been made to ensure the accuracy of the floorplan contained here, measurements of doors, windows, rooms and any other items are approximate and no responsibility is taken for any error, omission or mis-statement. This plan is for illustrative purposes only and should be used as such by any prospective purchaser. The services, systems and appliances shown have not been tested and no guarantee as to their operability or efficiency can be given.  
Made with Metropix ©2025

The Alexander Centre 15 - 17 Preston Street, Faversham, ME13 8NZ

Tel: 01795 533577

info@saxonshore.co.uk

www.saxonshore.uk



SAXON SHORE  
- ESTATE AGENTS -