



**SAXON SHORE**  
— ESTATE AGENTS —



## **56 Lower Road, Faversham, Kent ME13 7NG**

### **Offers in excess of £435,000**

Introducing this charming three bedroom, semi-detached house in Lower Road Faversham. Accommodation is set over two floors, this property is an ideal home for families or those seeking extra space.

Upon entering, you will find two spacious reception rooms and the kitchen, upstairs are two double bedrooms, a single bedroom or study and a bathroom with a separate W/C.

Outside to the rear is a large garden with a freestanding garage, at the front is another sizeable garden and a driveway providing ample parking.

In summary, this semi-detached house on Lower Road presents an excellent opportunity for anyone looking to settle in the historic, well-connected market town of Faversham. It is a property that truly deserves a viewing to appreciate all it has to offer.

Entrance Hall



Bedroom 2  
10'11" x 10'7" (3.34 x 3.25)



Bedroom 3  
7'6" x 7'4" (2.29 x 2.25)



Lounge  
10'7" x 14'8" (3.24 x 4.48)



Dining Room  
9'3" x 10'7" (2.84 x 3.25)



WC  
5'6" x 2'6" (1.68 x 0.77)



Kitchen  
8'9" x 10'7" (2.69 x 3.25)



Landing

Bedroom 1  
10'11" x 14'8" (3.34 x 4.48)



Bathroom  
5'6" x 4'7" (1.68 x 1.42)



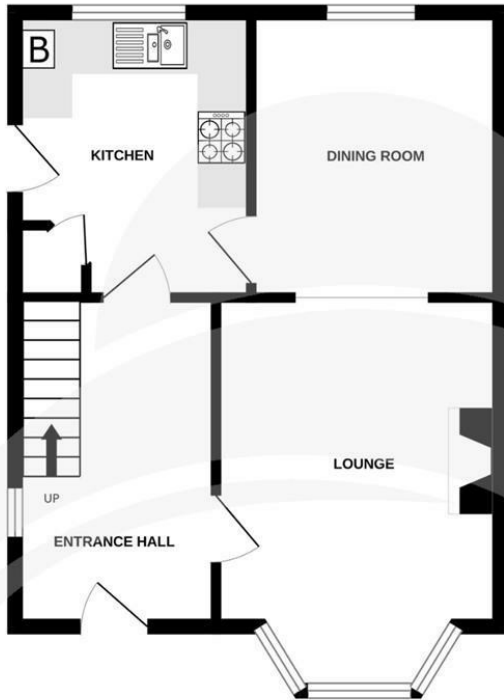
Garage



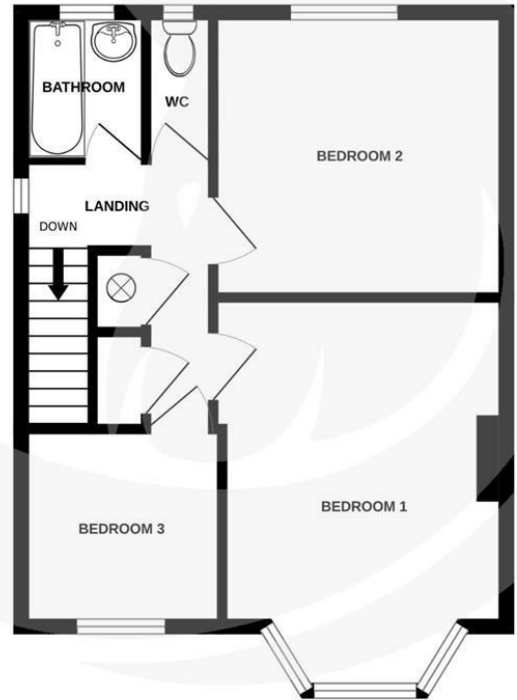
Garden



GROUND FLOOR  
39.4 sq.m. (424 sq.ft.) approx.



1ST FLOOR  
39.8 sq.m. (428 sq.ft.) approx.



TOTAL FLOOR AREA : 79.2 sq.m. (853 sq.ft.) approx.

Whilst every attempt has been made to ensure the accuracy of the floorplan contained here, measurements of doors, windows, rooms and any other items are approximate and no responsibility is taken for any error, omission or mis-statement. This plan is for illustrative purposes only and should be used as such by any prospective purchaser. The services, systems and appliances shown have not been tested and no guarantee as to their operability or efficiency can be given.  
Made with Metropix ©2024

