



SAXON SHORE
— ESTATE AGENTS —



39 West Street, Faversham, Kent ME13 7JG

Offers in excess of £350,000

Introducing this mid-terrace town house on West Street just a stones throw from the centre of Faversham. With easy access to nearby amenities, including shops, schools, and transport links, this home is perfectly situated for modern living.

Spread across three floors, the property comprises a well-proportioned lounge/dining room which opens onto the garden through French doors, the kitchen and a downstairs W/C on the ground floor.

Upstairs you will find two spacious bedrooms and a full bathroom, upstairs again to the second floor is the third bedroom.

To the back of the property is a small private car park, accessible to residents only, with two allocated parking spaces.

Whether you are a first-time buyer or looking to invest in a property with great potential, this mid-terrace house on West Street is a wonderful opportunity not to be missed.

Entrance Hall



Lounge

12'2 x 14'10 into bay (3.71m x 4.52m into bay)



Kitchen

9'1 x 8'3 (2.77m x 2.51m)



WC

Bedroom 1

12'2 x 8'8 (3.71m x 2.64m)



Bathroom

7 x 5'7 (2.13m x 1.70m)

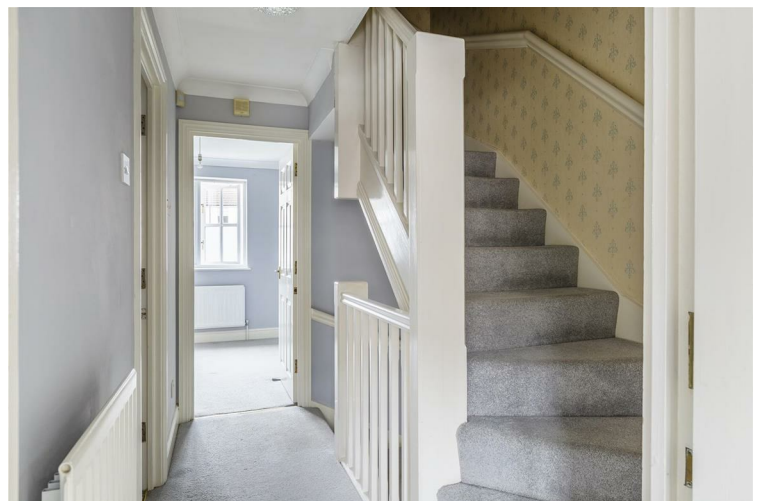


Bedroom 2

12'0" x 7'4" inc 8'3" (3.68m x 2.26m inc 2.54m)



Landing



Bedroom 3

9'9 x 8'7 + 8'1 x 5'7 (2.97m x 2.62m + 2.46m x 1.70m)



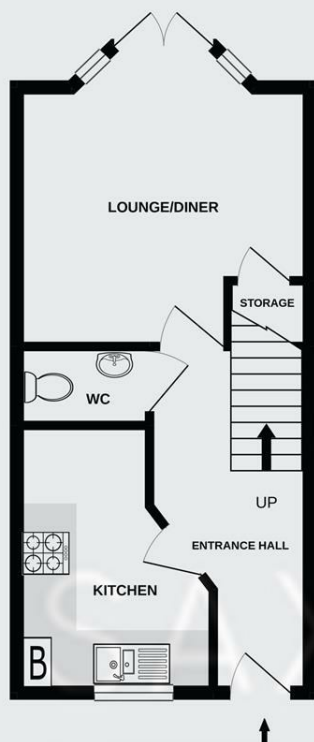
Garden



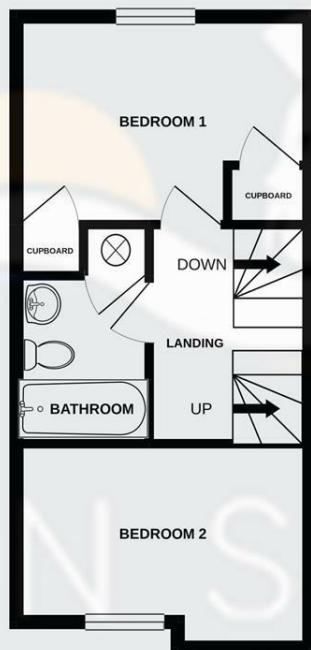
Parking Area



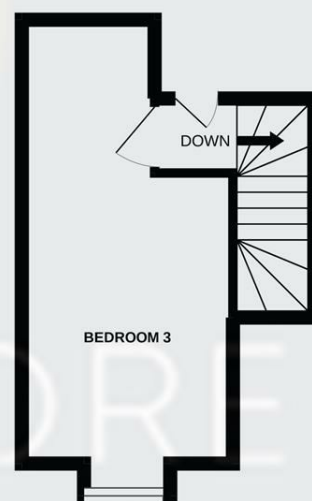
BASEMENT
316 sq.ft. (29.4 sq.m.) approx.



FIRST FLOOR
312 sq.ft. (29.0 sq.m.) approx.

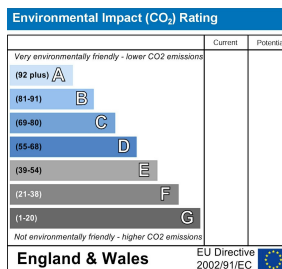
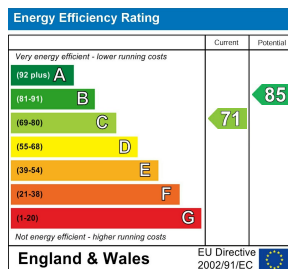


1ST FLOOR
187 sq.ft. (17.4 sq.m.) approx.



TOTAL FLOOR AREA : 815 sq.ft. (75.7 sq.m.) approx.

Whilst every attempt has been made to ensure the accuracy of the floorplan contained here, measurements of doors, windows, rooms and any other items are approximate and no responsibility is taken for any error, omission or mis-statement. This plan is for illustrative purposes only and should be used as such by any prospective purchaser. The services, systems and appliances shown have not been tested and no guarantee as to their operability or efficiency can be given.
Made with Metropix ©2021



The Alexander Centre 15 - 17 Preston Street, Faversham, ME13 8NZ

Tel: 01795 533577

info@saxonshore.co.uk

www.saxonshore.uk



SAXON SHORE
- ESTATE AGENTS -