



SAXON SHORE
— ESTATE AGENTS —



6 Lakeside Close, Faversham, ME13 7FA **Offers in excess of £350,000**

Welcome to Lakeside Close, Faversham - a charming property that offers the perfect blend of comfort and style. This delightful mid-terrace house has accommodation comprising, a spacious kitchen/diner, Lounge, WC, three bedrooms one with en suite, and a bathroom, providing ample space for a family or those who love to entertain.

Situated in a quiet cul-de-sac on the outskirts of Faversham near the picturesque village of Oare with its two pubs and great country walks, this home offers a peaceful retreat away from the town centre. The location is simply superb, combining the tranquillity of the countryside with the convenience of nearby amenities.

Step inside this well-presented property and be greeted by a warm and inviting atmosphere. The interior is tastefully decorated, creating a cosy and welcoming ambience throughout. The accommodation offers flexibility for various living arrangements, whether it's a cosy night in or a gathering with friends.

One of the highlights of this property is the stunning garden with a deck, perfect for enjoying a morning coffee or hosting summer barbecues. The outdoor space provides a lovely

Hallway

Lounge

10'2" x 15'2" (3.11 x 4.64)



Kitchen/Dining Room

16'4" x 8'2" (5 x 2.5)



WC



Landing

Bedroom 1

12'0" x 10'6" (3.68 x 3.22)



Ensuite

3'11" x 8'10" (1.2 x 2.7)



Bedroom 2

12'0" x 9'6" (3.68 x 2.9)



Bedroom 3

9'5" x 8'8" (2.88 x 2.65)



Bathroom

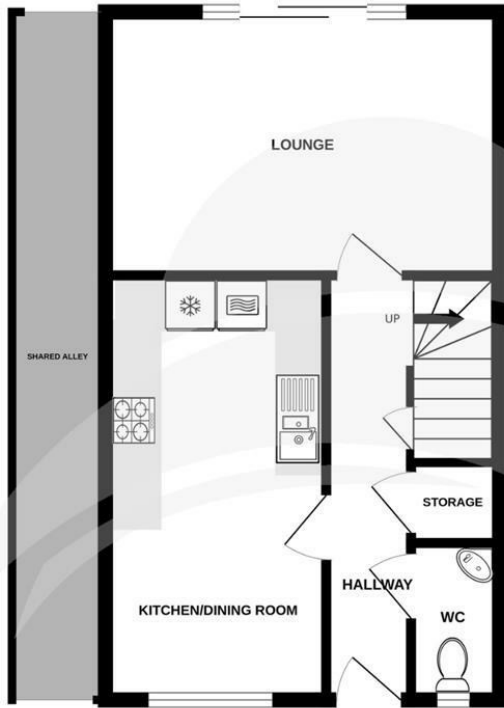
6'6" x 6'0" (2 x 1.85)



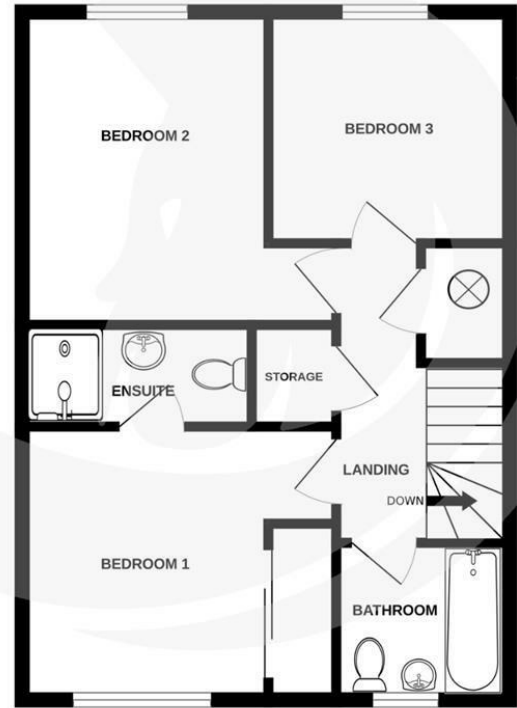
Garden



GROUND FLOOR
37.6 sq.m. (405 sq.ft.) approx.



1ST FLOOR
46.5 sq.m. (501 sq.ft.) approx.



TOTAL FLOOR AREA : 84.2 sq.m. (906 sq.ft.) approx.

Whilst every attempt has been made to ensure the accuracy of the floorplan contained here, measurements of doors, windows, rooms and any other items are approximate and no responsibility is taken for any error, omission or mis-statement. This plan is for illustrative purposes only and should be used as such by any prospective purchaser. The services, systems and appliances shown have not been tested and no guarantee as to their operability or efficiency can be given.
Made with Metropix ©2024

