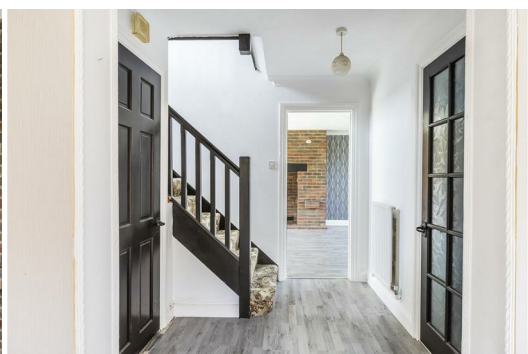




SAXON SHORE
— ESTATE AGENTS —



41 The Ridings, Whitstable, Kent CT5 3QE

£625,000

An impressive executive style four bedroom detached house located in the popular village of Chestfield on the outskirts of the sought after seaside town of Whitstable. Chestfield has a vibrant pub and popular golf course and offers excellent transport links for the local and wider areas.

The house itself has accommodation comprising of, entrance hall, wc, inner hall/study, lounge/diner, kitchen and utility room to the ground floor. Upstairs are four bedrooms the master is en suite and a family bathroom. Outside are gardens front and rear and an integral garage. The property is offered for sale with no onward chain and should be viewed at your earliest convenience.

Hall



Lounge

21'7 x 11'8 (6.58m x 3.56m)



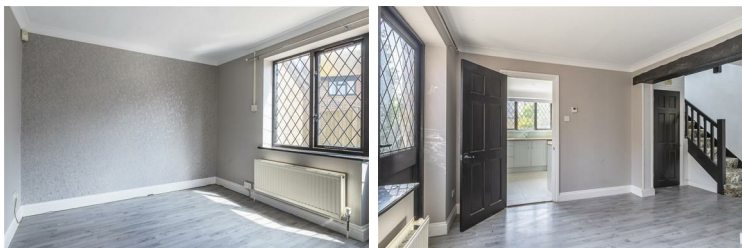
Landing



W/C

Dining Room

12'4 x 9'8 (3.76m x 2.95m)



Bedroom 1

12 + wardrobe x 10'1 (3.66m + wardrobe x 3.07m)



Kitchen

10'4 x 8'10 (3.15m x 2.69m)



En Suite

7 x 5'6 (2.13m x 1.68m)



Utility Room

7 x 6'8 (2.13m x 2.03m)



Bedroom 2

11'3 x 7'4 (3.43m x 2.24m)



Bedroom 3
11'3 x 6'10 (3.43m x 2.08m)



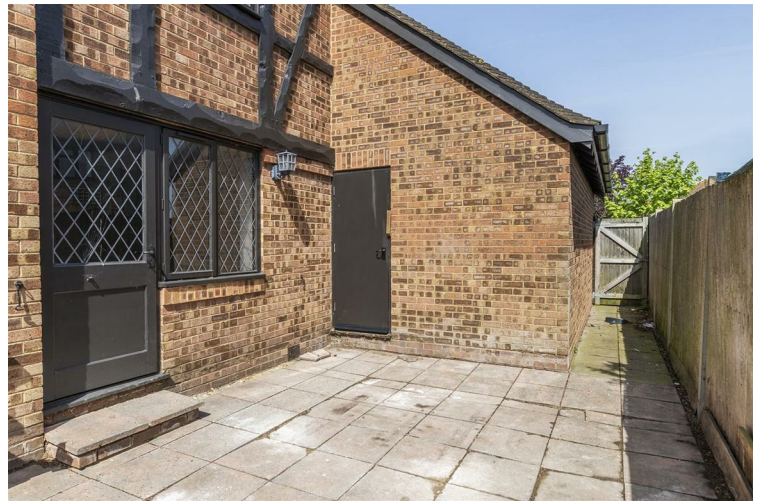
Double Garage
18 x 17'10 (5.49m x 5.44m)



Bedroom 4
10 x 9 (3.05m x 2.74m)



Garden



Bathroom
7 x 5'10 (2.13m x 1.78m)



Ground Floor
Approx. Floor Area 955 Sq.Ft. (88.7 Sq.M.)

Total Approx. Floor Area 1611 Sq.Ft. (149.6 Sq.M.)
Measurements are approximate. Not to scale. Illustrative purposes only
Made with Metropix ©2019

