



SAXON SHORE
— ESTATE AGENTS —



3-4 Stockers Hill, Faversham, ME13 9AA £700,000

Bocton End is a charming, detached, period cottage on the edge of the village of Boughton Under Blean. The property is set in large, mature gardens with a single garage and a large driveway with plenty of parking. A must-see feature are the marvellous views across the Kent countryside. Anyone living here, benefits from village life (Boughton has a shop, two pubs, restaurant and garage), but also benefits from easy access to all other areas- the coast, Canterbury and London, and is within cycling/walking distance of the market town of Faversham which has a mainline station.

The house has retained many original features whilst also having a light, modern feel and is decorated to a high standard throughout. The garden contains mature specimen trees, fruit trees and established borders, with a summerhouse (light and power connected), 2 wooden sheds, wood store, 1 metal shed and a greenhouse.

This is only the second time in 65 years, this stunning property has been on the market, and viewing is highly recommended.

Hallway



Dining Room

16'0" x 12'6" (4.90 x 3.83)



Living Room

16'3" x 12'6" (4.97 x 3.83)



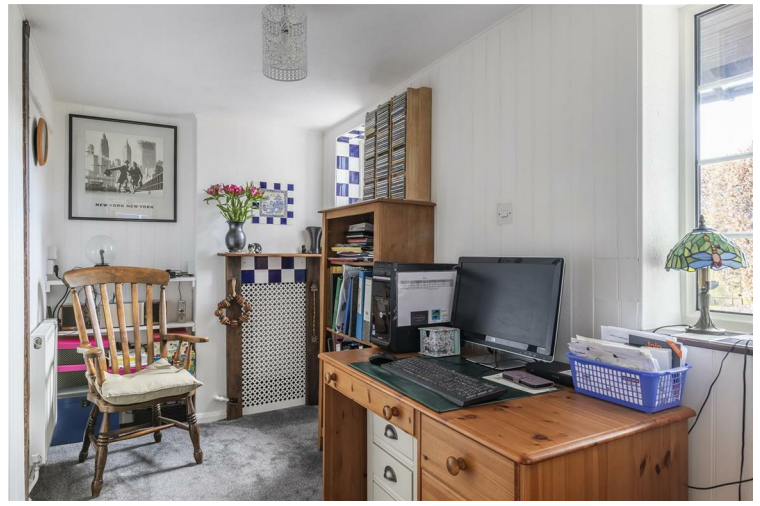
Kitchen

11'10" x 15'2" (3.61 x 4.63)



Study

12'7" x 5'10" (3.84 x 1.78)



Conservatory

10'5" x 14'9" (3.18 x 4.50)



WC



Landing



Bathroom

5'8" x 8'2" (1.75 x 2.50)



Bedroom 1
16'0" x 10'11" (4.90 x 3.35)



Ensuite
5'4" x 3'8" (1.65 x 1.13)



Bedroom 2
13'4" x 12'6" (4.07 x 3.83)



Bedroom 3
16'0" x 9'4" (4.90 x 2.86)



Garden



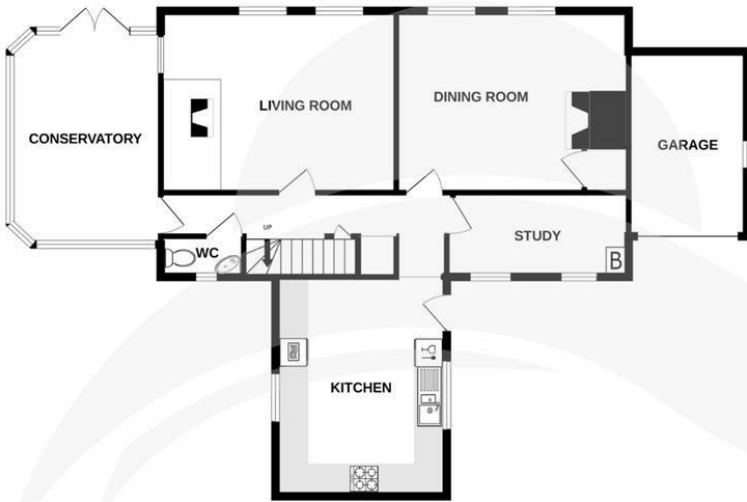
Garage
7'6" x 12'9" (2.30 x 3.90)



View



GROUND FLOOR
94.1 sq.m. (1013 sq.ft.) approx.



1ST FLOOR
52.9 sq.m. (569 sq.ft.) approx.



TOTAL FLOOR AREA : 147.0 sq.m. (1582 sq.ft.) approx.

Whilst every attempt has been made to ensure the accuracy of the floorplan contained here, measurements of doors, windows, rooms and any other items are approximate and no responsibility is taken for any error, omission or mis-statement. This plan is for illustrative purposes only and should be used as such by any prospective purchaser. The services, systems and appliances shown have not been tested and no guarantee as to their operability or efficiency can be given.
Made with Metropix ©2024

