



16 Deep Dene Close, Brixham – TQ5 0DZ

Guide Price **£365,000**





16 Deep Dene Close

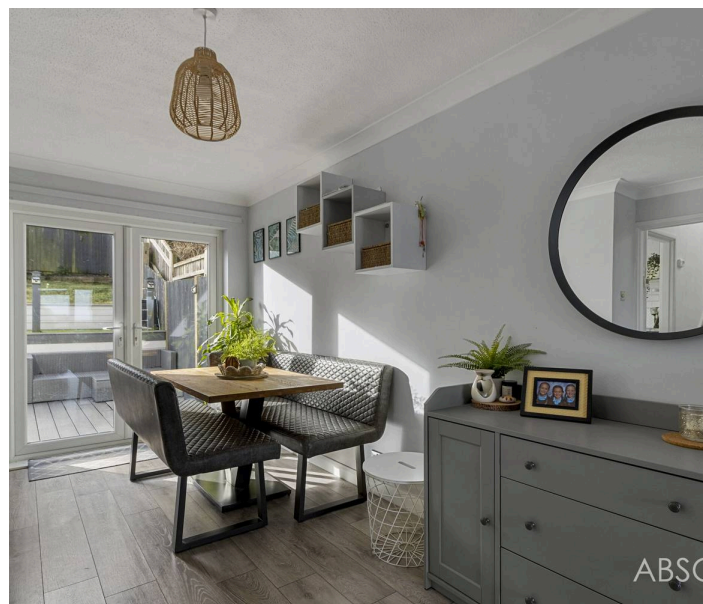
Brixham

Charming semi-detached house in quiet cul-de-sac with stunning sea views. Spacious lounge/diner, kitchen, 3 double bedrooms, bathroom, office, sunny garden, driveway. Ideal family home in serene location.

Council Tax band: C

Tenure: Freehold

- Semi-detached house in quiet cul-de-sac location
- Large lounge/diner
- Fully fitted, recently renovated kitchen
- Three double bedrooms
- Family bathroom
- Office/utility room (currently used as hair dressing studio)
- Single garage converted to useful store room
- Sea views
- Easy to maintain sunny back garden



16 Deep Dene Close

Brixham

The property is located in Higher Brixham, approximately one and a quarter miles from Brixham's town centre which boasts an array of shops, facilities and amenities as well as the picturesque Brixham harbour surrounded by a range of boutique shops, bars and restaurants. Just a short walk from the property there is a nearby field for dog walkers, a local convenience store, vets and takeaway. The property also has good access to Hillhead and down into Kingswear, the South Hams and beyond. Primary and Secondary schooling are both located a mile and a half distant.

Absolute Sales & Lettings

Absolute Sales & Lettings, 36 Fore Street - TQ5 8DZ

01803 214214

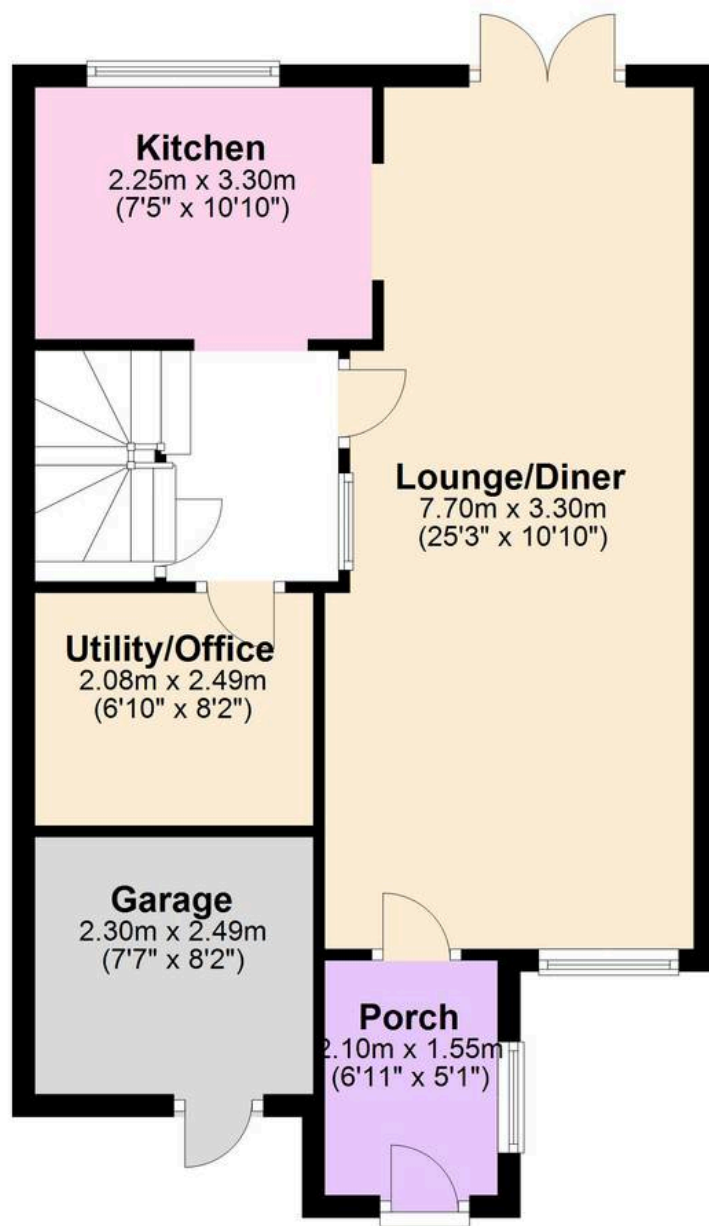
brixham@movewithabsolute.co.uk

movewithabsolute.co.uk/



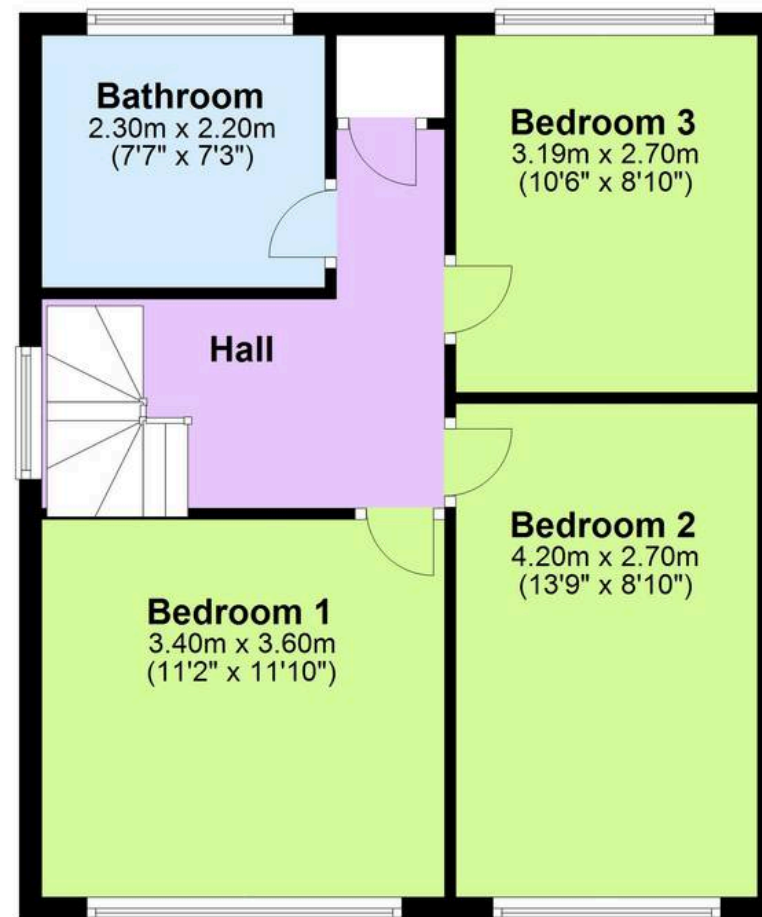
Ground Floor

Approx. 48.8 sq. metres (525.4 sq. feet)



First Floor

Approx. 38.7 sq. metres (416.5 sq. feet)



Total area: approx. 87.5 sq. metres (942.0 sq. feet)

Approx
Plan produced using PlanUp.

