



Park Court, Heath Road, Brixham – TQ5 9AX

Guide Price **£274,950**





Park Court, Heath Road

Brixham

Charming mid-terrace house in sought-after Berry Head, Brixham. Open plan kitchen diner, sea views from terrace, 3 bedrooms, residents parking. No onward chain. Outdoor space for relaxing and entertaining, perfect coastal living opportunity.

Council Tax band: C

Tenure: Freehold

EPC Energy Efficiency Rating: E

- Located in the sought after Berry Head area of Brixham
- Mid-terrace house
- No onward chain
- Open plan kitchen diner
- Living room with tiled terrace to the rear
- uPVC double glazing and gas central heating
- Sea views
- Ample residents parking
- Three bedrooms
- Close to bus routes, schools and local shops



Park Court, Heath Road

Brixham

The property is situated in the sought after Berry Head area of Brixham, approximately 1/2 a mile from Brixham town centre which boasts an array of shops, amenities and facilities as well as the picturesque harbour surrounded by a range of boutique shops, bars and restaurants. The main number 12 bus service can be found here with connections to the neighbouring towns of Paignton and Torquay. The property is also within 1/2 to 2/3 of a mile from Brixham rugby club and swimming pool. Approximately a mile distance is Berry Head Nature Reserve with its Napoleonic forts, stunning views and access out onto the South West coast path.

Absolute Sales & Lettings

Absolute Sales & Lettings, 36 Fore Street – TQ5 8DZ

01803 214214

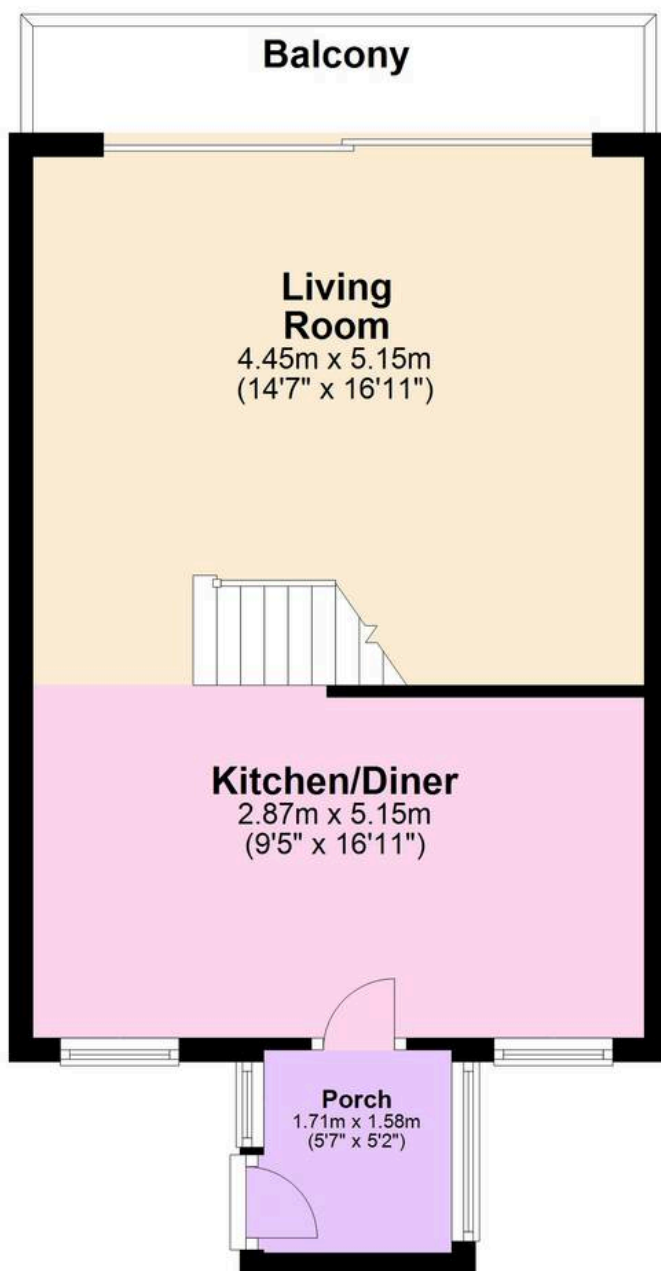
brixham@movewithabsolute.co.uk

movewithabsolute.co.uk/



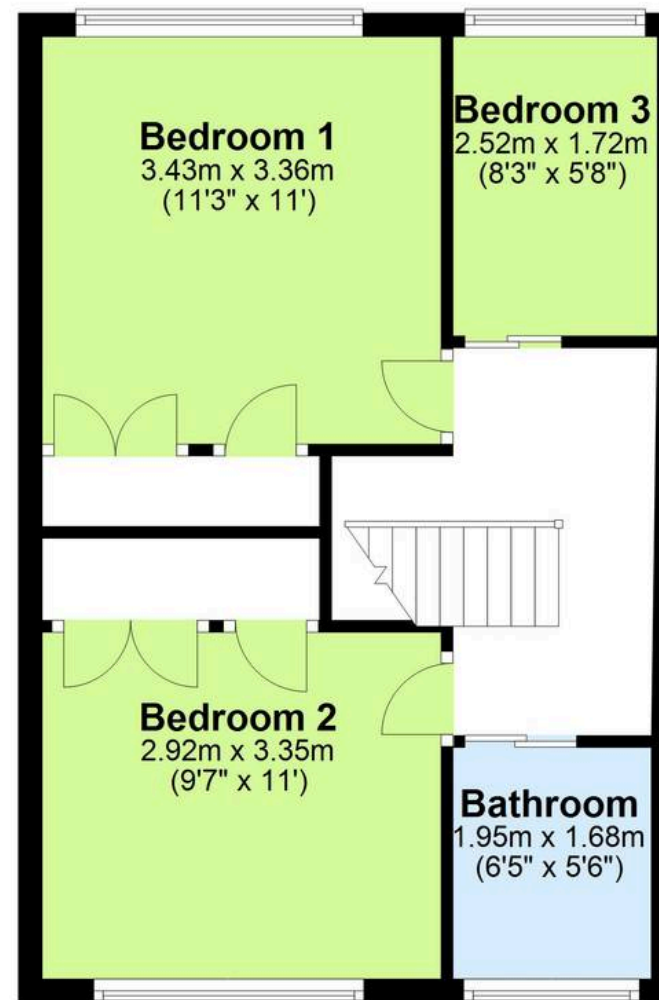
Ground Floor

Approx. 41.1 sq. metres (442.2 sq. feet)



First Floor

Approx. 40.9 sq. metres (440.3 sq. feet)



Total area: approx. 82.0 sq. metres (882.4 sq. feet)

