



ABSOLUTE

Golden Close Cottage, Upton Manor Road, Brixham – TQ5

Guide Price £285,000





Golden Close Cottage

Upton Manor Road, Brixham

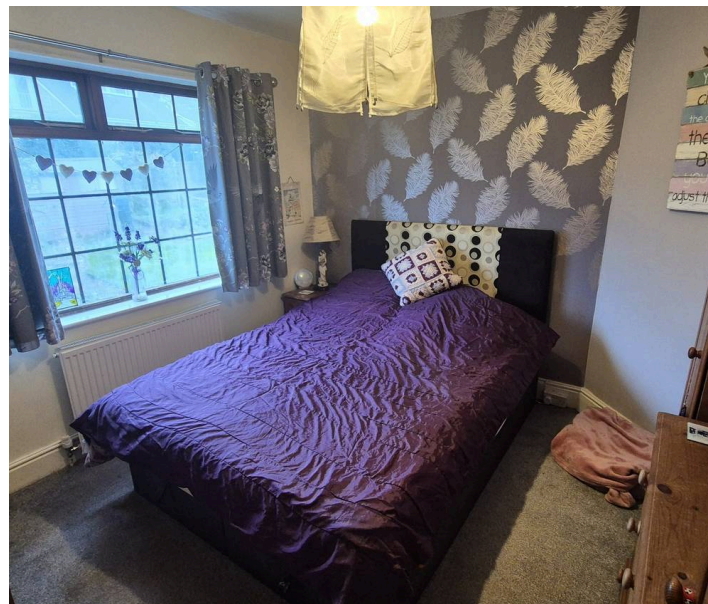
Charming 3 bed, semi-detached house. Lounge with log burner, kitchen, dining room, bathroom. Southerly aspect garden. Potential for off-road parking. Gas central heating. Perfect family home!

Council Tax band: C

Tenure: Freehold

EPC Energy Efficiency Rating: E

- Semi-detached house with lots of character
- Fitted kitchen & separate dining room
- Family bathroom/WC
- Front and rear gardens enjoying a Southerly aspect
- Potential to create off-road parking (subject to planning permission)
- Walking distance to local parks, shops and schools
- Bus routes and transport links nearby
- New boiler fitted October 2024



Golden Close Cottage

Upton Manor Road, Brixham

Nestled in the St. Marys area of Brixham, this three bed semi detached house, is located near to local shops at St Marys Square, schools and local bus routes. On the 18 bus route, you can either go to Brixham town centre with its historic port, or in the opposite direction down to the beautiful village of Kingswear on the banks of the River Dart. Here the ferry gives you access into the deeper South Hams.

Absolute Sales & Lettings

Absolute Sales & Lettings, 36 Fore Street - TQ5 8DZ

01803 214214

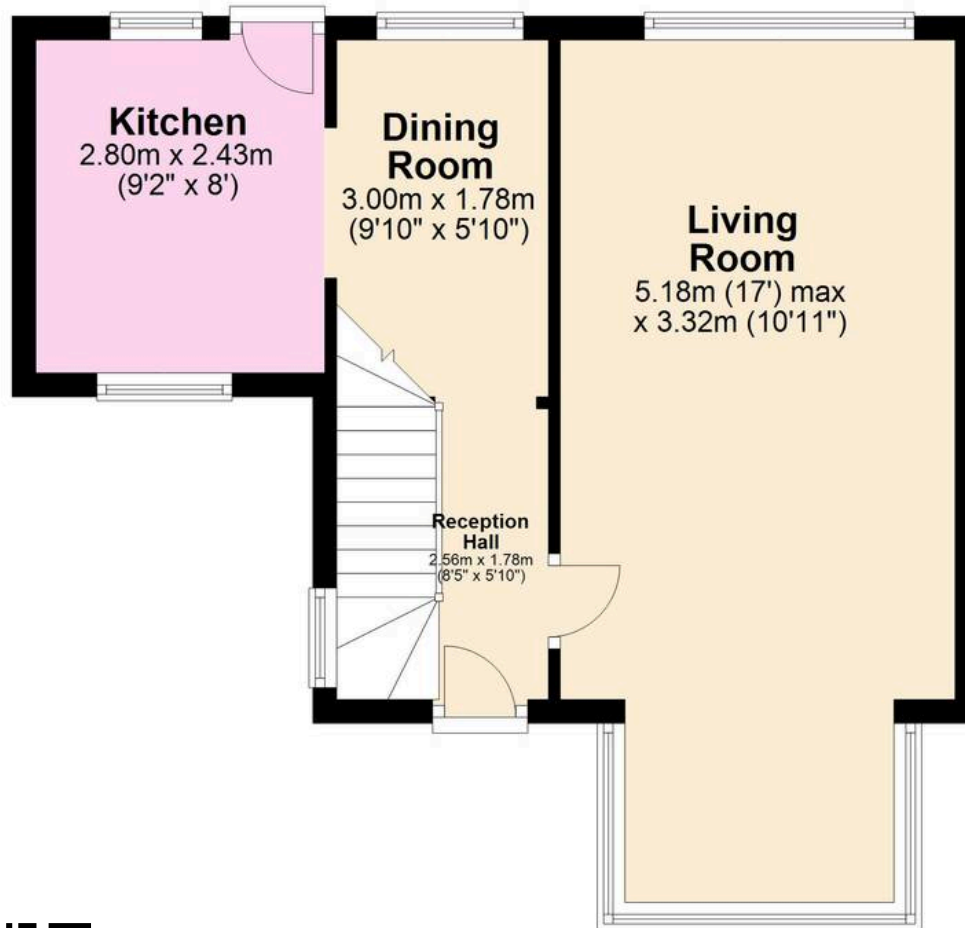
brixham@movewithabsolute.co.uk

movewithabsolute.co.uk/



Ground Floor

Approx. 36.8 sq. metres (396.5 sq. feet)



First Floor

Approx. 32.4 sq. metres (348.3 sq. feet)



Total area: approx. 69.2 sq. metres (744.8 sq. feet)

