



The Beach Houses | Green Lane | CO14 8HF



# OVERVIEW

---

Welcome to this stunning three-storey coastal home offering breathtaking sea views, located right next to a beautiful sandy beach. This beautifully designed home is immaculate throughout and recently refurbished to an exceptionally high standard. The ground floor boasts a spacious open-plan kitchen/diner/lounge with underfloor heating and herringbone wood flooring.

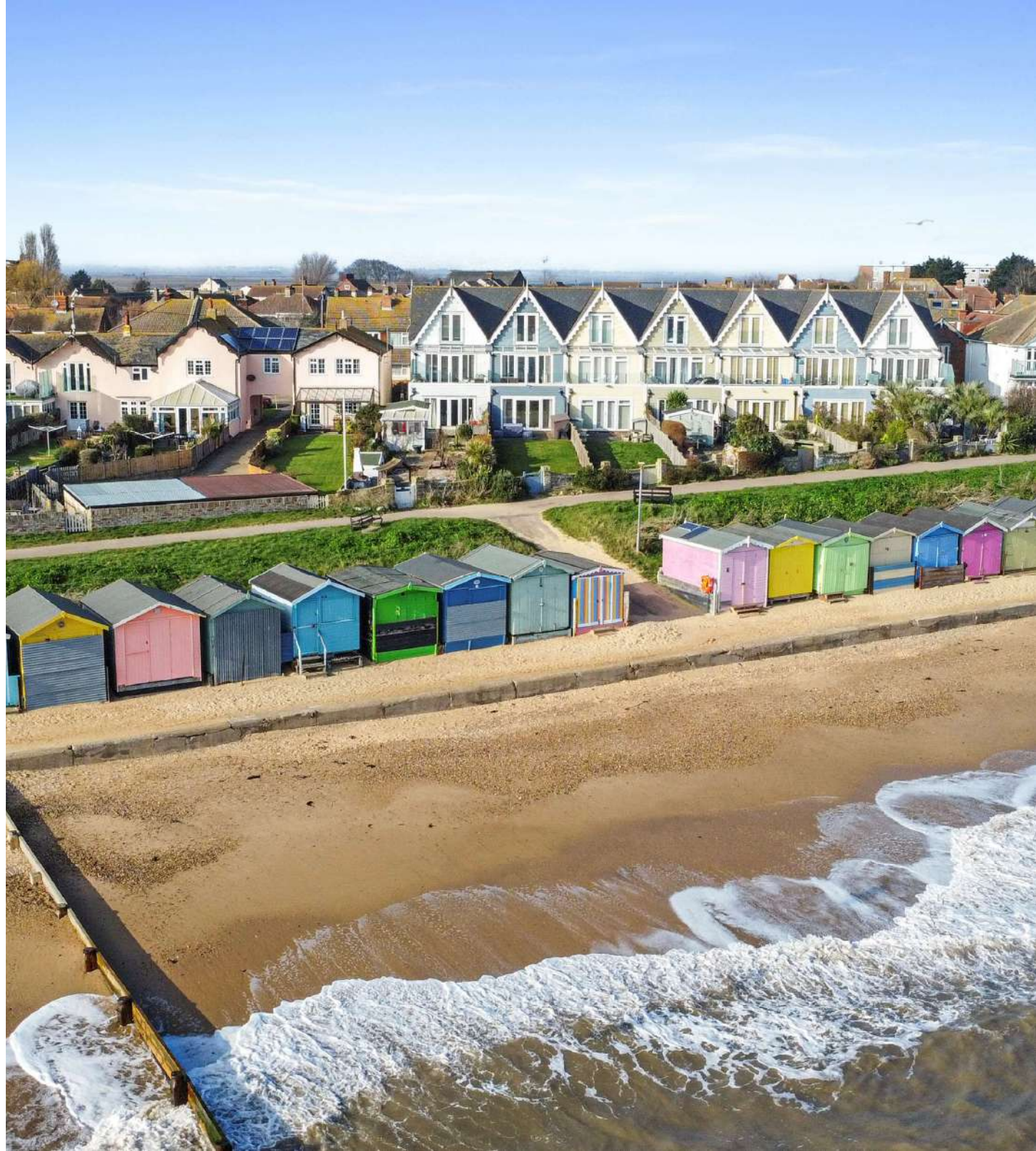
There are four beautifully presented bedrooms between the first and second floors and two luxurious bathrooms with underfloor heating.

This property has been tastefully renovated and offers high specification finishes throughout, as well as a prime location with uninterrupted beach access and views. This beautiful home is ideal for those seeking a peaceful and contemporary seaside lifestyle.

## STEP INSIDE

The ground floor, featuring a wood herringbone floor with underfloor heating, has spotlighting throughout and a modern and airy, open-plan design which seamlessly connects the kitchen and living area.

The kitchen, adorned with elegant cabinetry with feature lighting and pendant lighting over the spacious island, has seating for eight and vast storage. The kitchen leads into the large, open plan living area.













# STEP INSIDE

---

Large patio doors open from the living area to an inviting rear garden, allowing natural light to flood the interior. There is also a convenient utility room which leads to a cloakroom, completing this floor. The first floor of the property exudes elegance and comfort. It features a large master bedroom that opens onto a spacious balcony, offering stunning sea views. Adjacent to the master bedroom is a storage cupboard, family bathroom and Bedroom 3.

The modern, well-appointed bathroom has sleek fixtures and stylish mood lighting, creating a relaxing ambience. The second floor provides a serene retreat with a spacious second bedroom featuring a Juliet balcony which provides panoramic sea views. Natural light floods the room.

The fourth bedroom is to the front of the property. A Jack and Jill en-suite shower room complements both bedrooms and is equipped with modern fixtures and a skylight that brightens the space.

# OUTSIDE

The exterior of the property showcases charming, colourful facades with classic architectural detailing, creating a vibrant and welcoming appearance. The front of the property is complemented by a well-maintained brick paved driveway offering off-street parking.

The idyllic rear garden has a patio, storage and a lush green lawn extending towards the ocean. The rear garden gate opens onto the beach, offering seamless access to the beautiful shoreline.





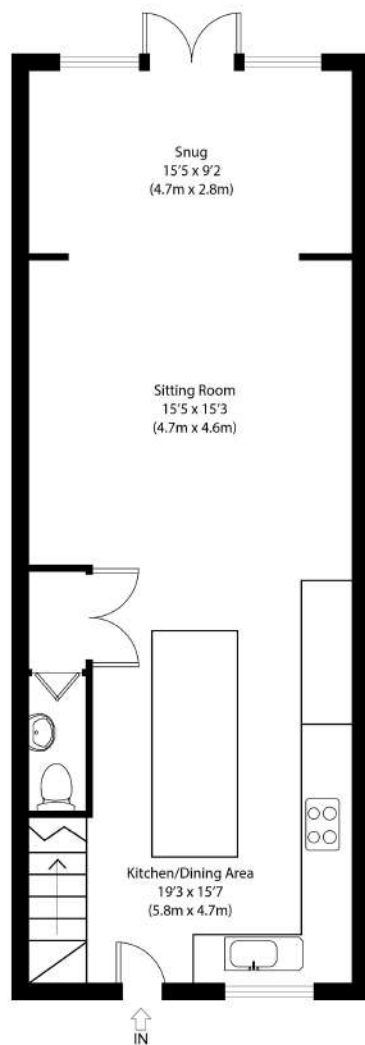
# LOCATION

---

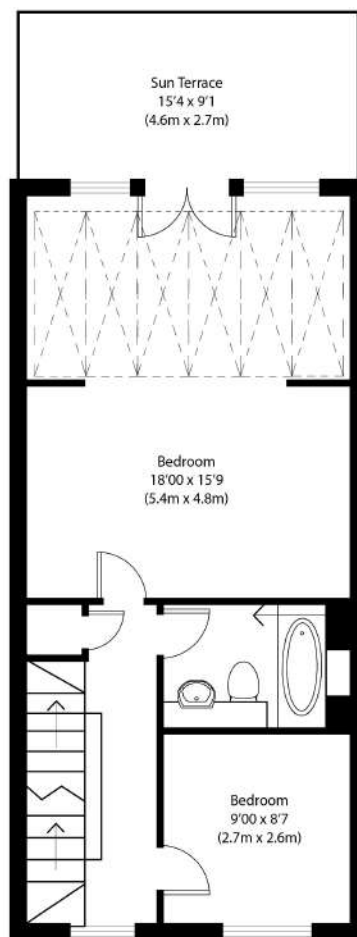
This property is perfectly situated for those who enjoy coastal and countryside living. The stunning home offers direct access to the beach, allowing for easy enjoyment of seaside activities and breathtaking views.

The area is characterised by its tranquil atmosphere, making it an ideal escape from the hustle and bustle of town and city life.

Nearby, you'll find quaint local shops, cafés, and restaurants and other amenities such as the pier, public swimming pool and parks. The backwaters and surrounding nature both add to the charm of the community. The location also benefits from good transport links and a mainline train station to Liverpool Street, providing convenient access to surrounding areas and essential amenities.



Ground Floor

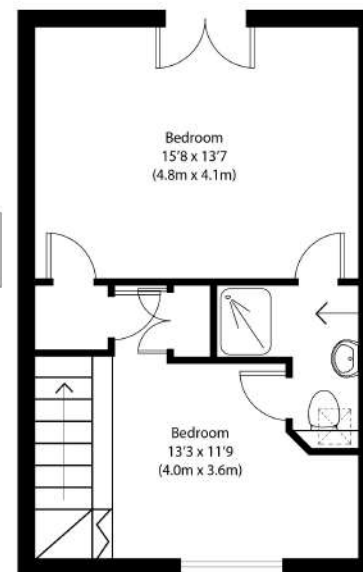


First Floor

Approximate Gross Internal Area  
1685 sq ft (157 sq m)

Disclaimer: Floor plan measurements are approximate and are for illustrative purposes only. While we do not doubt the floor plan accuracy and completeness, you or your advisers should conduct a careful, independent investigation of the property in respect of monetary valuation. copyright www.finecountrygroup.co.uk

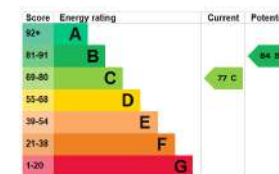
FINE & COUNTRY



Second Floor

RICHARD SEELEY  
SALES MANAGER

follow Fine & Country Colchester on



Agents notes: All measurements are approximate and for general guidance only and whilst every attempt has been made to ensure accuracy, they must not be relied on. The fixtures, fittings and appliances referred to have not been tested and therefore no guarantee can be given that they are in working order. Internal photographs are reproduced for general information, and it must not be inferred that any item shown is included with the property. For a free valuation, contact the numbers listed on the brochure. Copyright Â© 2020 Fine & Country Ltd. Registered in England and Wales. Company Reg No. 5930387 Registered Office: Country Estates Limited, Carter Court, Midland Road, Hemel Hempstead, Herts HP2 5GE. Printed







Fine & Country Colchester  
Tel: +44 01206 878155  
[colchester@fineandcountry.com](mailto:colchester@fineandcountry.com)  
99 London Road, Stanway, Colchester, Essex, CO3 0NY

**F&C**  
fineandcountry.com™