

FINE & COUNTRY



Hillcrest, Wix Road, Great Oakley, Harwich, CO12 5BJ

£750,000

Nestled in the charming village of Great Oakley, Hillcrest on Wix Road is a truly enchanting property that exudes timeless elegance and offers a haven of tranquillity. This magnificent home boasts a plethora of desirable features that are sure to captivate even the most discerning buyer.



THE PROPERTY

Nestled in the charming village of Great Oakley, Hillcrest on Wix Road is a truly enchanting property that exudes timeless elegance and offers a haven of tranquility. This magnificent home boasts a plethora of desirable features that are sure to captivate even the most discerning buyer.

As you step through the entrance, you are immediately greeted by a sense of warmth and sophistication. The property showcases four generously proportioned double bedrooms, each thoughtfully designed to provide a peaceful sanctuary for rest and relaxation. The bedrooms offer an abundance of space and natural light, creating an inviting atmosphere.

The heart of the home lies within its beautifully appointed living spaces. The dining room is an exquisite setting for hosting intimate gatherings and creating cherished memories with loved ones. The study offers a quiet retreat, ideal for those in pursuit of creativity or a dedicated workspace. The breakfast room, bathed in sunlight, provides the perfect spot to start the day with a delicious meal while enjoying the picturesque views of the surrounding gardens.

The well-equipped kitchen is a culinary haven, where culinary delights are effortlessly prepared. With ample counter space, appliances, and sleek cabinetry. Adjacent to the kitchen, a convenient utility area adds practicality to this already remarkable space.

Outside, the property sits on a sprawling plot, enveloped by nature's beauty. The meticulously maintained gardens offer a symphony of colours and fragrances, providing a serene backdrop for outdoor gatherings or moments of quiet reflection. A double garage and a generously sized driveway ensure that parking is never a concern, accommodating multiple vehicles with ease.





LOCATION

Located on the north eastern coast of Essex, Harwich is a historic port town with a rich maritime heritage. Situated at the confluence of the rivers Stour and Orwell, Harwich offers picturesque views of the North Sea and the surrounding countryside.

Stepping into Harwich is like stepping back in time, as the town is dotted with beautifully preserved Tudor and Georgian architecture. The charming streets are lined with colourful buildings, quaint shops, and inviting cafes, creating a warm and welcoming atmosphere for residents and visitors alike.

One of the main attractions in Harwich is its bustling harbour, which has been in use for centuries. Here, you can watch as ships and fishing boats come and go, and even take a leisurely stroll along the waterfront promenade. The harbour is also home to the iconic Harwich Redoubt, a historic fortification that offers panoramic views of the town and the sea.

For history enthusiasts, Harwich is a treasure trove of fascinating sites. The Electric Palace Cinema, one of the oldest purpose-built cinemas in the UK, showcases a mix of classic and contemporary films. The Harwich Maritime Museum provides a glimpse into the town's seafaring past, with exhibits that highlight the importance of the Royal Navy and the East India Company.

Nature lovers will appreciate the natural beauty that surrounds Harwich. The nearby Harwich and Dovercourt Bay Beaches offer sandy shores and tranquil waters, perfect for a relaxing day by the sea. The Harwich Nature Reserve provides a haven for wildlife, with its diverse habitats and scenic walking trails.







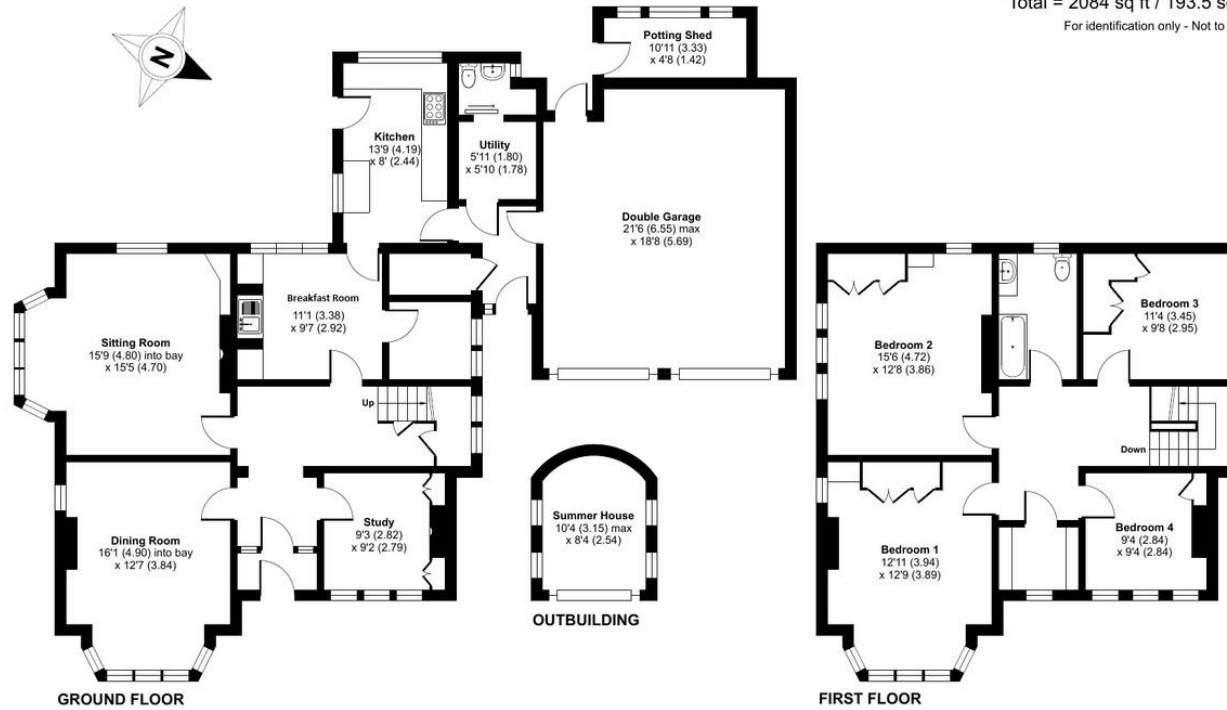
Wix Road, Great Oakley, Harwich, CO12

Approximate Area = 1955 sq ft / 181.6 sq m (excludes garage)

Outbuildings = 129 sq ft / 11.9 sq m

Total = 2084 sq ft / 193.5 sq m

For identification only - Not to scale



Floor plan produced in accordance with RICS Property Measurement Standards incorporating International Property Measurement Standards (IPMS2 Residential). © ricscom 2024. Produced for Fine & Country. REF: 1123047

99 London Road, Stanway,
Colchester, Essex, CO3 0NY

www.fineandcountry.com
01206 878155
colchester@fineandcountry.co
m

Agents Note: Whilst every care has been taken to prepare these particulars, they are for guidance purposes only. All measurements are approximate and are for general guidance purposes only and whilst every care has been taken to ensure their accuracy, they should not be relied upon and potential buyers/tenants are advised to recheck the measurements