



ESTATE AGENTS • VALUER • AUCTIONEERS



Pipers Reach Ballam Oaks, Lytham

- Ultra Modern Detached Family Property
- Offering Superb Accommodation over 3 Floors
- Large Feature Windows with Countryside Views
- Large Triple Height Glass Atrium
- Open Plan Modern Stuart Frazer Kitchen & Utility/Boot Room
- Living Room & Separate Retreat Room
- Five/Six Bedrooms & Four Bathrooms
- Office & Cinema Room/Gym
- Double Garage & Off Road Parking
- Viewing Essential

£1,890,000

VIEWING: Strictly by appointment through 'John Ardern & Company'



www.johnardern.com



Pipers Reach Ballam Oaks, Lytham

BALLAM OAKS

The Ballam Oaks development comprises twelve impressive, individually designed executive homes combining charm and character with all the modern luxuries that you would expect from a prestigious exclusive gated development. Being within minutes from Lytham Green and the town centre with its tree lined shopping facilities, restaurants and bars. There are a good selection of local primary and secondary schools within easy reach together with a number of championship golf courses. The M55 motorway access is also within a couple of minutes driving distance.

PIPERS REACH

Pipers Reach is an ultra modern 6100 sq ft home. Built with Chatsworth Antique brick and large Weru, triple glazed windows, which enjoy great views across the open countryside from the Living Room, Kitchen and five of the Bedrooms. There is a large triple-height glass atrium, open plan modern Stuart Frazer Kitchen and a Bootility, Living Room and separate Retreat Room. There is access through the Bootility to a Double Garage and garden storage area.

This spectacular home comprises two separate wings which are connected by the broad carpeted walkway.

On the right hand side at first floor level is the Master Bedroom, Dressing Room, Upstairs Laundry and En Suite. A further staircase leads to the second floor Bedroom 5 and 6 together with a shower room, and Plant/storage room.

On the left hand side at first floor level is Bedroom 2 which has an ensuite and dressing room area, Bedrooms 3 and 4 and the family bathroom. A further staircase on this side leads to the second floor Plant/storage room, and two bonus rooms which could be used as an office, gym, play room or two further bedrooms.

Underfloor heating is run via an eco friendly air source heat pump and wood burning stoves will ensure that this well insulated home will always be warm and cosy.



FEATURES INCLUDE

Traditional build with high specification aspects and fittings. Substantial insulation. Weru triple glazed Aluminium windows and doors. Front door with finger print entry system. Oak internal doors throughout. Oak floorboards on the ground floor. Underfloor heating. Air source heat pump. Fresh air circulation/exchange arrangements. 'Rako' mood and energy efficient lighting.

'Sonus' sound, wi-fi and security system. Modern Stuart Frazer Kitchen, utility facilities and Bootility. Villeroy Boch bathrooms, shower rooms and en suites. NHBC cover.

GROUND FLOOR

RECEPTION HALLWAY/GLASS ATRIUM

9.22m x 4.04m max (30'3 x 13'3 max)

Stunning central reception hallway with a feature triple height glass atrium approached through a front door with finger print entry system. Oak flooring throughout with underfloor heating. Turned staircase leads off to the first floor galleried landing, The open plan Living/Dining Room and family Kitchen leads off. Inner hallway with two large built in full length cloaks/store cupboards.





Pipers Reach Ballam Oaks, Lytham

CLOAKS/WC

Two piece Villeroy & Boch suite comprises a semi concealed low level WC with dual flush. Wall hung vanity wash hand basin with illuminated drawer below and an illuminated wall mirror above. Illuminated recessed display.

LARGE OPEN PLAN LIVING ROOM

9.37m x 5.99m (30'9 x 19'8)

Impressive principal reception area. The focal point of the living area is a recessed fireplace with a large wood burning cast iron stove. Aerial point and socket for a wall mounted TV. Full length windows to the side and rear of the property enjoying beautiful garden views. Inset spot lights and Sonos sound system. Matching oak flooring with underfloor heating throughout. Bi-folding patio doors give direct garden access.



RETREAT ROOM

5.99m x 4.98m (19'8 x 16'4)

Currently used as a home office but designed with a 'Retreat Room' in mind. Large opening picture windows enjoy an outlook over the front and side of the property. Matching oak flooring.

MODERN KITCHEN

5.99m x 5.44m (19'8 x 17'10)

Beautifully made contemporary kitchen comprises an excellent range of eye and low fixture cupboards and drawers. Stainless steel sink unit with centre mixer tap. Set in working surfaces with matching splash back and concealed LED lighting. Two large central Island units/breakfast bar with further cupboards and drawers below. Additional preparation sink with a Quooker instant boiling water tap. Built in Bora induction hob with a central built in extractor. Further built in appliances comprise: Two Siemens combination Steam, Microwave and Conventional ovens. Two integrated dishwashers with matching cupboard fronts. Integrated fridge and freezer. Wine fridge and concealed illuminated coffee preparation area. Door leads off to the 'Bootility' and Garaging. Further set of bi-folding doors give rear garden access. Tiled flooring with underfloor heating.





Pipers Reach Ballam Oaks, Lytham



UTILITY/BOOT ROOM

4.39m x 4.32m (14'5 x 14'2)

Door with inset triple glazed panel gives direct access to the side of the property. The utility room is also very well fitted with an extensive range of fitted cupboards for cloaks, linen and shoe storage. Stainless steel sink with centre mixer tap set in display surface. Matching tiled flooring. Internal door leads to the attached GARAGE.

GARDEN STORE/DOUBLE GARAGE

7.19m max x 5.97m (23'7 max x 19'7)

Approached through an electric up and over door. Power and light supplies connected.

FIRST FLOOR

Feature galleried central landing with panoramic rural views to the rear aspect. Vaulted high level ceiling with two additional Velux double glazed pivoting roof lights. Superb first and second floor bedroom suites lead off to both the right and left hand side of the property.

FIRST FLOOR NORTH WING

Spacious suite comprising a Bedroom area with separate Dressing Room, Laundry Room and luxury En Suite

Bathroom. Continuing staircase leads to the second floor accommodation.

MASTER BEDROOM SUITE

5.99m x 3.78m (19'8 x 12'5)

Superb private bedroom suite. Full length picture window makes the most of the panoramic views to the rear. Three further opening windows. Inset ceiling spot lights and Sonus speakers.



DRESSING ROOM

5.94m x 3.89m (19'6 x 12'9)

Excellent range of bespoke handcrafted open wardrobes to three walls, incorporating hanging rails, shelving, drawers and shoe storage. Fitted mirror.



EN SUITE BATHROOM

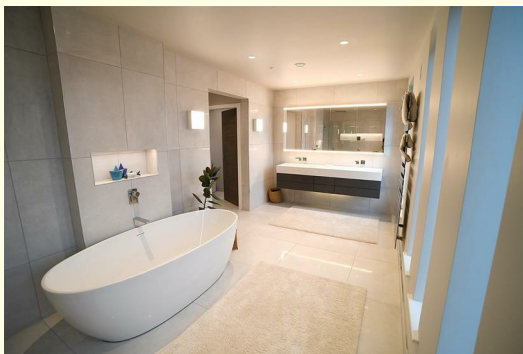
5.69m x 2.64m (18'8 x 8'8)

Stunning four piece white bathroom suite by Villeroy & Boch. Freestanding oval bath with Hansgrohe fittings. Twin vanity wash hand basins with illuminated drawers below. Two centre mixer taps and illuminated mirror fronted bathroom cabinet above. Part glazed showering area with overhead rainfall shower and additional hand held shower attachment. Illuminated display recesses. Porcelain tiled



Pipers Reach Ballam Oaks, Lytham

floor and matching tiled walls. Sonos sound system. Number of obscure full length feature windows. Additional opening obscure triple glazed window. Contemporary heated ladder towel rail. Fitted double cupboard with adjoining display shelving.



EN SUITE WC

1.96m x 0.99m (6'5 x 3'3)

Separate en suite WC with a semi concealed low level WC with a Geberit dual flush. Additional illuminated display niche. Part obscure triple glazed opening window to the side elevation. Matching tiled flooring.

FIRST FLOOR LAUNDRY ROOM

Very useful first floor laundry with a Miele washing machine and Miele tumble dryer. Display shelving for linen storage. Fitted wall mounted drying rails.



SECOND FLOOR NORTH WING

Velux double glazed pivoting roof light. With a store room/plant room leading off.

BEDROOM FIVE

4.93m x 4.42m max (16'2 x 14'6 max)

Large L shaped double bedroom with an opening window overlooking the front aspect. Additional Velux pivoting roof light.

BEDROOM SIX/TV DEN

5.38m x 4.39m max (17'8 x 14'5 max)

Feature full length picture window overlooking the rear of the property with superb rural views. Two Velux pivoting roof lights.

SHOWER ROOM/WC

3.23m x 1.75m (10'7 x 5'9)

Three piece white Villeroy & Boch bathroom suite comprises: Wide shower cubicle with sliding glazed doors, overhead rainfall shower and additional hand held shower. Illuminated display recess. Semi concealed low level WC. Wash hand basin with a centre mixer tap and mirror fronted bathroom cabinet above. Velux pivoting roof light. Tiled walls and floor. Heated ladder towel rail.





Pipers Reach Ballam Oaks, Lytham

FIRST FLOOR SOUTH WING

With a further separate staircase leading to additional second floor accommodation. Useful understair store cupboard.

BEDROOM SUITE TWO

5.97m x 3.61m (19'7 x 11'10)

Second double ensuite bedroom suite. Large opening windows overlook the front aspect. Inset spot lights.



DRESSING ROOM

2.21m x 2.18m (7'3 x 7'2)

Walk through dressing area with two fitted double wardrobes and an opening window to the side elevation. Door leading to:

EN SUITE SHOWER/WC

2.24m x 2.21m (7'4 x 7'3)

Three piece white Villeroy & Boch bathroom suite comprises: Wet room style showering area with and overhead rainfall shower and additional hand held shower. Illuminated display recesses. Semi concealed low level WC. Vanity wash hand basin with illuminated drawers below. Centre mixer tap and mirror fronted bathroom cabinet above. Ceramic tiled floor and feature walls. Part obscure glazed opening window to the side elevation.



BEDROOM THREE

4.78m x 3.66m (15'8 x 12')

Two opening windows to the side elevation. Fitted double wardrobe with adjoining display shelving. Inset ceiling spot lights.

BEDROOM FOUR

5.99m x 4.11m (19'8 x 13'6)

Fourth large double bedroom. Feature full length triple glazed picture window overlooking the rear aspect. Adjoining opening triple glazed window.

Two fitted double wardrobes. Inset spot lights.



BATHROOM/WC

4.62m x 1.98m (15'2 x 6'6)

Part obscure triple glazed window to the side elevation. Luxury four piece white bathroom suite by Villeroy & Boch. Oval bath with Hansgrohe fittings. Vanity wash hand basin with illuminated drawer below. Centre mixer tap and illuminated wall mounted mirror fronted cabinet above. Part glazed showering area with overhead rainfall shower and additional hand held shower attachment. Illuminated display recesses. Semi concealed low level WC completes the suite a Geberit dual flush. Porcelain marble effect tiled walls and floor. Heated ladder towel rail.





Pipers Reach Ballam Oaks, Lytham

SECOND FLOOR SOUTH WING

Large landing area with a Velux pivoting roof light. Very flexible second floor accommodation lending itself to a variety of uses.

OFFICE

5.99m x 4.11m max (19'8 x 13'6 max)

Full length triple glazed window to the rear aspect. Velux pivoting roof light.

CINEMA/PLAY ROOM/GYM

5.99m x 5.97m max (19'8 x 19'7 max)

Large opening window overlooks the front of the property. Two additional Velux pivoting roof lights.

PLANT ROOM

OUTSIDE

Externally, this home offers an extensive paved sun terrace and lawned area with great views of the Lytham countryside beyond the Grizalenia hedging. The porch over the back door and garage doors offers an excellent area for wood storage.



TENURE FREEHOLD/COUNCIL TAX

The site of the property is held Freehold. Council Tax Band H

MAINTENANCE

A management company has been formed to administer and control outgoing expenses to common parts. A figure is to be confirmed.

VIEWING THE PROPERTY

Strictly by appointment through 'John Ardern & Company'.

INTERNET & EMAIL ADDRESS

All properties being sold through John Ardern & Company

can be accessed and full colour brochures printed in full, with coloured photographs, on the internet:

www.johnardern.com, rightmove.com, onthemarket.com,
Email Address: zoe@johnardern.com

THE GUILD

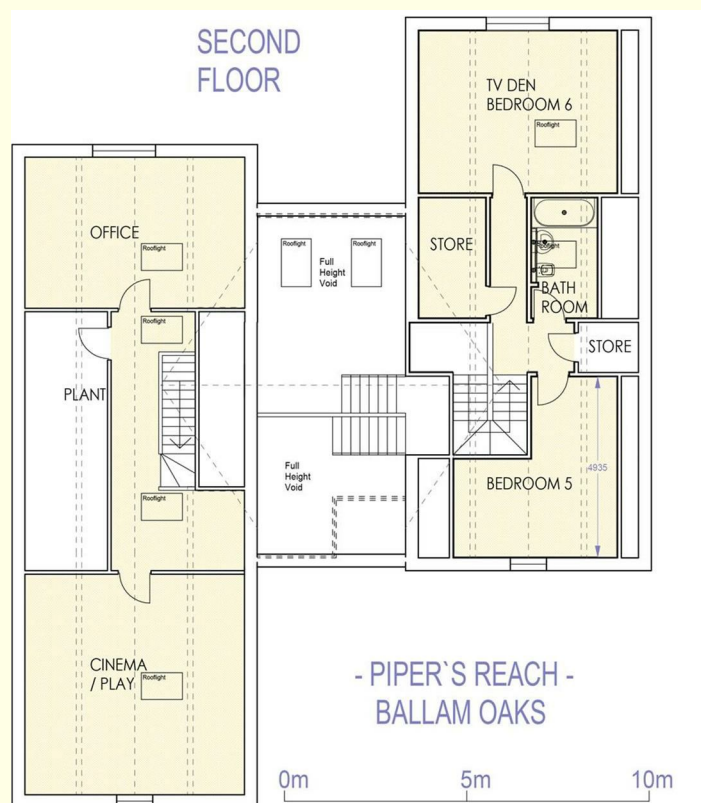
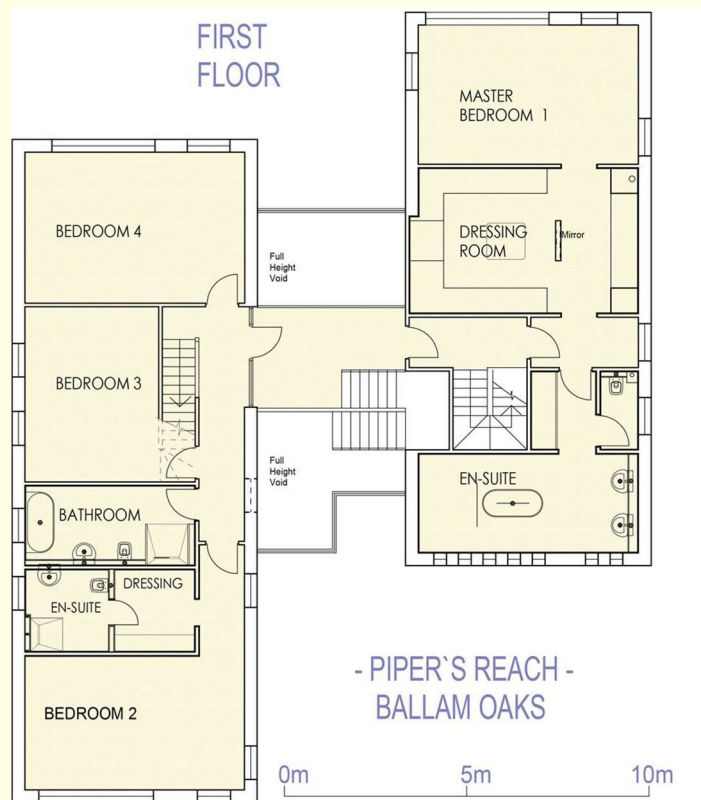
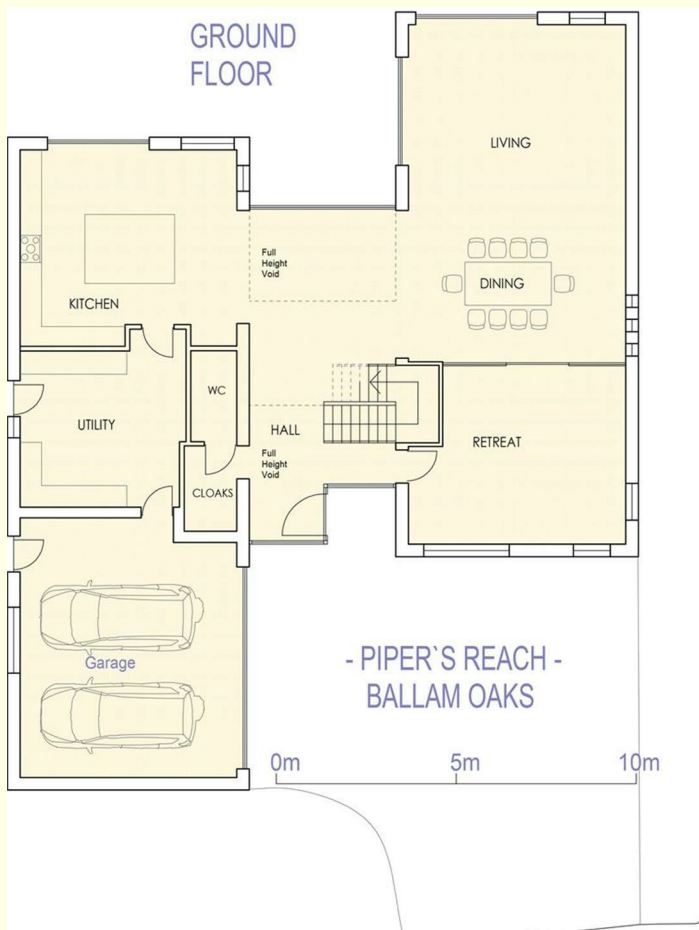
John Ardern & Company are proud to announce that we have been appointed as the only Estate Agent practice in the South Fylde to be appointed as members of 'The Guild of Property Professionals'. As well as a network of carefully chosen independent Estate Agents throughout the UK, we now have an associated London office, 121 Park Lane, Mayfair with our own dedicated telephone number: - 02074098367. Outside the office, there are four touch screens enabling interested clients to access all our displayed properties. The website address is www.guildproperty.co.uk.

PROPERTY MISDESCRIPTION ACT

John Ardern & Company for themselves and their clients declare that they have exercised all due diligence in the preparation of these details but can give no guarantee as to their veracity or correctness. Any electrical or other appliances included have not been tested, neither have drains, heating, plumbing and electrical installations. All purchasers are recommended to carry out their own investigations before contract. Details Prepared September 2023



Pipers Reach Ballam Oaks, Lytham



Pipers Reach Ballam Oaks, Lytham



6 Park Street, Lytham, Lancashire, FY8 5LU
 Tel: 01253 795555 • Fax: 01253 794455
www.johnardern.com

Principal: John M. Ardern FNAEA
 Sales Manager: Zoe J. Ardern (BAHons) MNAEA

Energy Efficiency Rating		Current	Potential
Very energy efficient - lower running costs			
(92 plus) A			
(81-91) B			
(69-80) C			
(55-68) D			
(39-54) E			
(21-38) F			
(1-20) G			
Not energy efficient - higher running costs			
England & Wales		76	78
		EU Directive 2002/91/EC	

Environmental Impact (CO ₂) Rating		Current	Potential
Very environmentally friendly - lower CO ₂ emissions			
(92 plus) A			
(81-91) B			
(69-80) C			
(55-68) D			
(39-54) E			
(21-38) F			
(1-20) G			
Not environmentally friendly - higher CO ₂ emissions			
England & Wales			
		EU Directive 2002/91/EC	



John Ardern & Company fort hemselves and their clients declare that they have exercised all due diligence in the preparation of these details but can give no guarantee as to their veracity or correctness. Any electrical or other appliances included have not been tested, neither have drains, heating, plumbing and electrical installations. All purchasers are recommended to carry out their own investigations before contract.