

**TO LET**



**Brabant Way, Westbury**

**2 Bedrooms, 1 Bathroom, Apartment**

**£795 pcm**



## Brabant Way, Westbury

Apartment,  
2 bedroom, 1 bathroom

£795 pcm

Date available: 20th May  
2024

Deposit: £915

Holding deposit: £180


Unfurnished

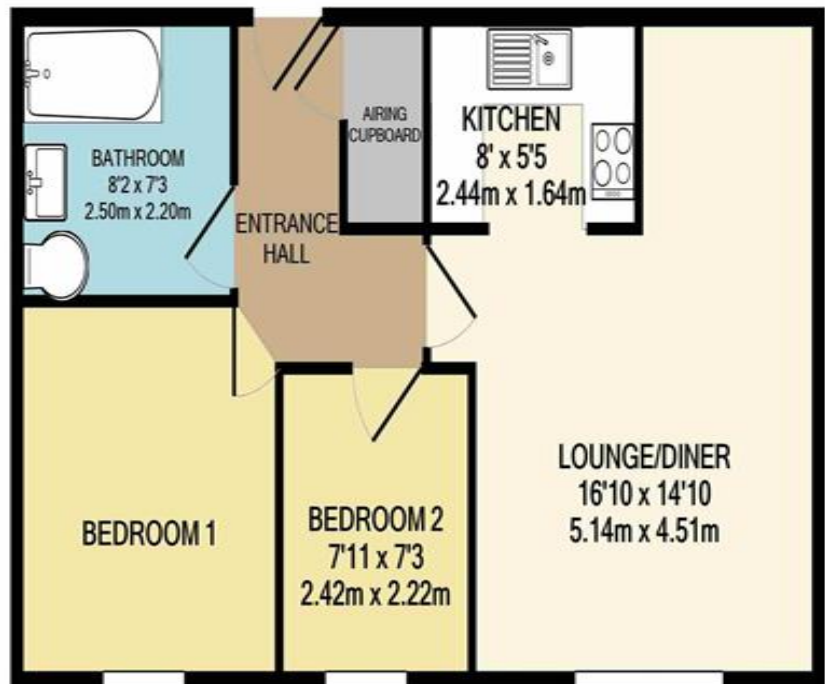
Council Tax band: B

- A well presented two double bedroom apartment
- Recently refurbished and presented to an excellent standard
- Open plan living room with fitted kitchen
- Garage and parking
- Communal garden
- Popular residential location
- Professionally managed by Martin & Co.

A modern two bedroom apartment in a popular residential location close to local amenities and benefiting from a garage and communal garden. Both bedrooms are doubles and the flat also features an open plan living room with fitted kitchen. Available from the 20th May for long term let.

## Energy Efficiency Rating

	Current	Potential
Very energy efficient - lower running costs		
(92-100) <b>A</b>		
(81-91) <b>B</b>		
(69-80) <b>C</b>	80	82
(55-68) <b>D</b>		
(39-54) <b>E</b>		
(21-38) <b>F</b>		
(1-20) <b>G</b>		
Not energy efficient - higher running costs		
<b>England, Scotland &amp; Wales</b>	EU Directive 2002/91/EC	



## Martin & Co Westbury

7 Palomino Place • Westbury • Wiltshire • BA13 3SD  
T: 01373 866686 • E: westbury@martinco.com

# 01373 866686

<http://www.martinco.com>



**Accuracy:** References to the Tenure of a Property are based on information supplied by the Seller. The Agent has not had sight of the title documents. A Buyer is advised to obtain verification from their Solicitor. Items shown in photographs including but not limited to carpets, fixtures and fittings are not included unless specifically mentioned within the sales particulars. They may however be available by separate negotiation. Buyers must check the availability of any property and make an appointment to view before embarking on any journey to see a property. No person in the employment of the agent has any authority to make any representation about the property, and accordingly any information given is entirely without responsibility on the part of the agents, sellers(s) or lessors(s). Any property particulars are not an offer or contract, nor form part of one. **Sonic / Laser Tape:** Measurements taken using a sonic / laser tape measure may be subject to a small margin of error. **All Measurements:** All Measurements are Approximate. **Services Not tested:** The Agent has not tested any apparatus, equipment, fixtures and fittings or services and so cannot verify that they are in working order or fit for the purpose. A Buyer is advised to obtain verification from their Solicitor or Surveyor.