



27, Hetterley Drive, Barleythorpe, LE15 7LF £950 PCM

Modern mid-terraced house situated on a popular development on the outskirts of Oakham.

The energy efficient-accommodation briefly comprises:

GROUND FLOOR: Entrance Hall, Sitting Room, Kitchen, Cloakroom/WC; **FIRST FLOOR:** Master Bedroom with en-suite Shower Room, two further Bedrooms (1 double and 1 single), Family Bathroom.

OUTSIDE: 1 car parking space with use of a shared visitor space, enclosed lawned rear garden.

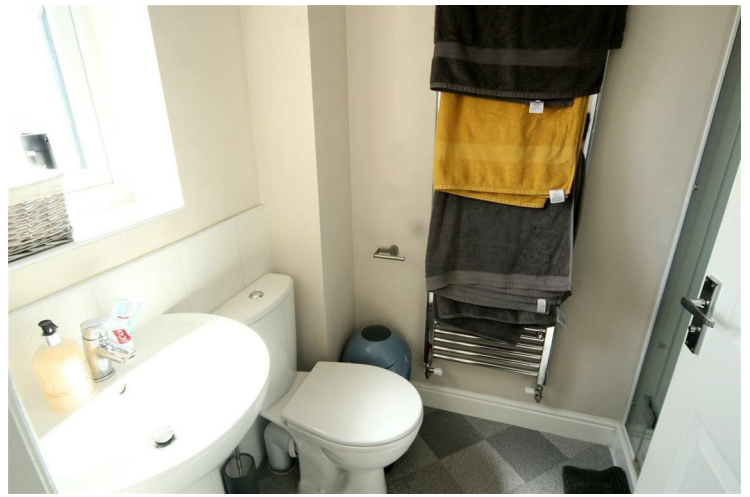
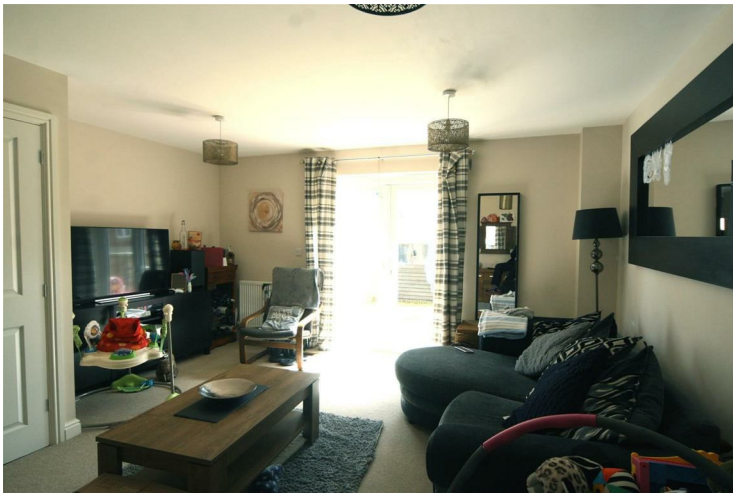
Council Tax Band: B (Rutland)
Deposit: £1096.15

Oakham
5 Market Street
Oakham
Rutland LE15 6DY
Tel: 01572 755555
Letting Centre: 01572 755513
oakham@murray.co.uk

Stamford
Sales Enquiries
01780 766604
Lettings Enquiries
01572 755513

stamford@murray.co.uk

Uppingham
18 High Street East
Uppingham
Rutland LE15 9PZ
Tel: 01572 822587
Letting Centre: 01572 822587
uppingham@murray.co.uk





SERVICES

- Mains electricity
- Mains water supply
- Mains sewerage
- Gas central heating

According to <https://checker.ofcom.org.uk/>
 Broadband availability: Standard, Superfast, Ultrafast
 Mobile signal availability:
 Indoor: O2 and Vodafone - voice likely, data limited; EE and Three - voice and data limited
 Outdoor: EE, Three, O2 and Vodafone - voice and data likely
 Results are predictions and not a guarantee.

None of the services, fittings, or appliances (if any) heating installations, plumbing or electrical systems, telephone or television points have been tested by the Selling Agents.

Energy Efficiency Rating		Current	Potential
Very energy efficient - lower running costs			
(92 plus) A			
(81-91) B			
(69-80) C			
(55-68) D			
(39-54) E			
(21-38) F			
(1-20) G			
Not energy efficient - higher running costs			
England & Wales		EU Directive 2002/91/EC	

Environmental Impact (CO ₂) Rating		Current	Potential
Very environmentally friendly - lower CO ₂ emissions			
(92 plus) A			
(81-91) B			
(69-80) C			
(55-68) D			
(39-54) E			
(21-38) F			
(1-20) G			
Not environmentally friendly - higher CO ₂ emissions			
England & Wales		EU Directive 2002/91/EC	