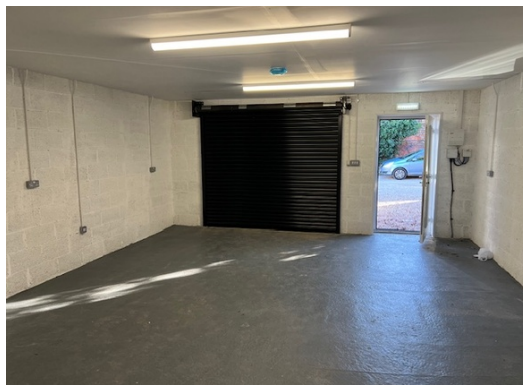
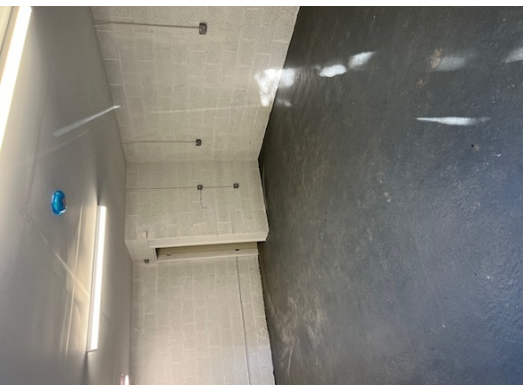


Aughton Road, Southport  
Southport, PR8

To Let  
£800 per month



- \* PHOENIX WORKS BUSINESS PARK
- \* GROUND FLOOR OFFICE SPACE
  - \* APPROX 650 SQFT
  - \* AVAILABLE NOW
  - \* 24 HOUR ACCESS
  - \* CCTV



97 | SOUTH ROAD | WATERLOO | L22 0LR  
Tel: 0151 920 2404  
E-mail: [info@logicstates.co.uk](mailto:info@logicstates.co.uk)





- \* PHOENIX WORKS BUSINESS PARK
- \* GROUND FLOOR OFFICE SPACE
- \* APPROX 650 SQFT
- \* AVAILABLE NOW
- \* 24 HOUR ACCESS
- \* CCTV

These particulars do not form part of any offer or contract and must not be relied upon as statements or representations of fact. Any areas, measurements or distances are approximate. The text, photographs and plans are for guidance only and are not necessarily comprehensive. It should not be assumed that the property has all the necessary planning, building regulation or other consents and we have not tested services, equipment or facilities. Purchasers must satisfy themselves by inspection or otherwise.