



2 Bed Apartment
located in New Ash Green

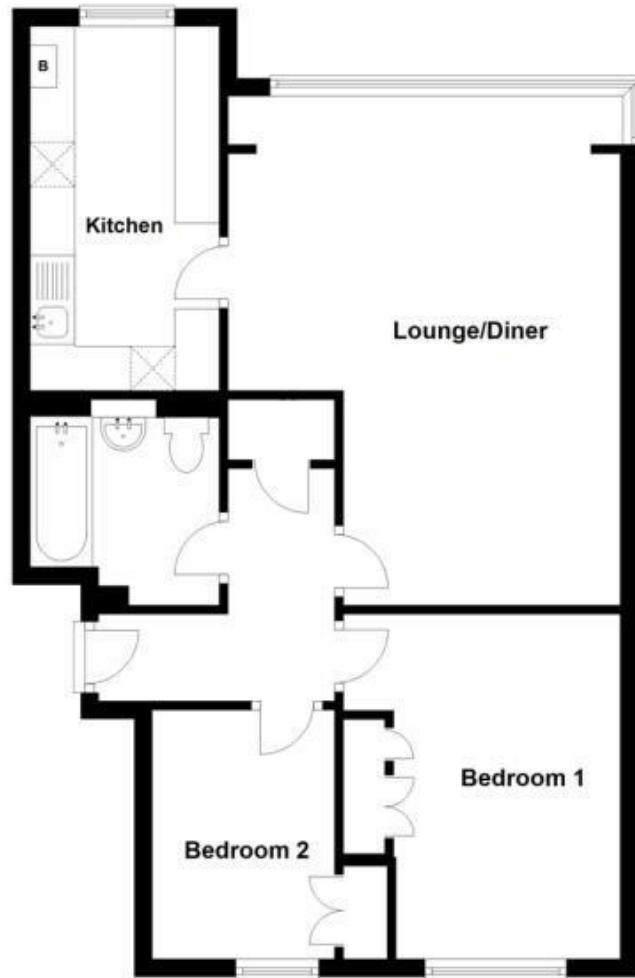


11 Lance Croft
New Ash Green
DA3 8PP



Second Floor

Approx. 60.9 sq. metres (655.9 sq. feet)



£1,200 Per Month

CONTACT

Wrotham Road
Meopham
Gravesend
Kent
DA13 0JL

EMAIL

info@hartleystates.com

TELEPHONE

01474 815811

<https://www.hartleystates.com>

SUMMARY

A fabulous rural location with woodland views, yet positioned well for the amenities of New Ash Green. A top floor flat with excellent accommodation including entrance hall, spacious lounge/diner, fitted kitchen, two bedrooms and bathroom. The property also benefits from gas central heating and double glazing.

DIRECTIONS

At the mini roundabout in New Ash Green continue straight across and take the third left into Meadow Lane and follow road to the end.

Energy Efficiency Rating		Current	Potential
Very energy efficient - lower running costs			
(92 plus) A			
(81-91) B			
(69-80) C		67	72
(55-68) D			
(39-54) E			
(21-38) F			
(1-20) G			
Not energy efficient - higher running costs			
England & Wales		EU Directive 2002/91/EC	