



**6 Bed Bungalow - Detached  
located in Meopham**





White Gables Wrotham  
Road  
Meopham  
Gravesend  
DA13 0HX



6



null



null



D

£3,450

CONTACT

Wrotham Road  
Meopham  
Gravesend  
Kent  
DA13 0JL

EMAIL

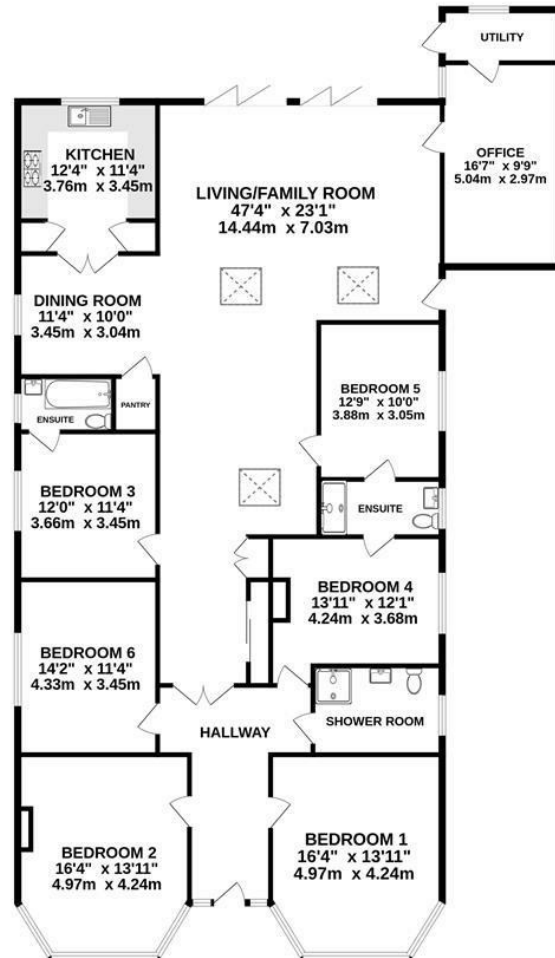
info@hartleyestates.com

TELEPHONE

01474 815811

https://www.hartleyestates.com

GROUND FLOOR  
2535 sq.ft. (235.6 sq.m.) approx.



TOTAL FLOOR AREA : 2535 sq.ft. (235.6 sq.m.) approx.

Whilst every attempt has been made to ensure the accuracy of the floorplan contained here, measurements of doors, windows, rooms and any other items are approximate and no responsibility is taken for any error, omission or mis-statement. This plan is for illustrative purposes only and should be used as such by any prospective purchaser. The services, systems and appliances shown have not been tested and no guarantee as to their operability or efficiency can be given.  
Made with Metrepx ©2024

## SUMMARY

We are pleased to offer for let this beautiful 6 bedroom Detached Bungalow. The property provides fantastic open plan living with a well maintained and secluded garden to the rear.

The beautiful open plan Lounge, Dining Room and Family Room has bi-fold doors opening onto the large patio with pergola and well maintained private garden.

## DIRECTIONS

