



YOUR SAFETY IS OUR FIRST PRIORITY

 Our priority is to help all of our clients and applicants start, continue & complete the moving process as safely as possible in a Covid Secure environment.

 Before meeting one of our experienced team we will be sending a Covid Health Assessment.

 All our staff are supplied with PPE & our offices have cleaning procedures in place before and after every visit from the public. With each office having a dedicated work station with plastic screen.

 Our preference is to carry out virtual valuations and viewings where possible with homeowners, buyers, and tenants to limit face-to-face contact.

 Adhering to Government guidelines we will be practising strict social distancing at all times in our offices and when visiting customers.

 Our offices are open but by appointment only, please call or email to arrange a suitable date and time. Face coverings to be worn by both public and staff members.

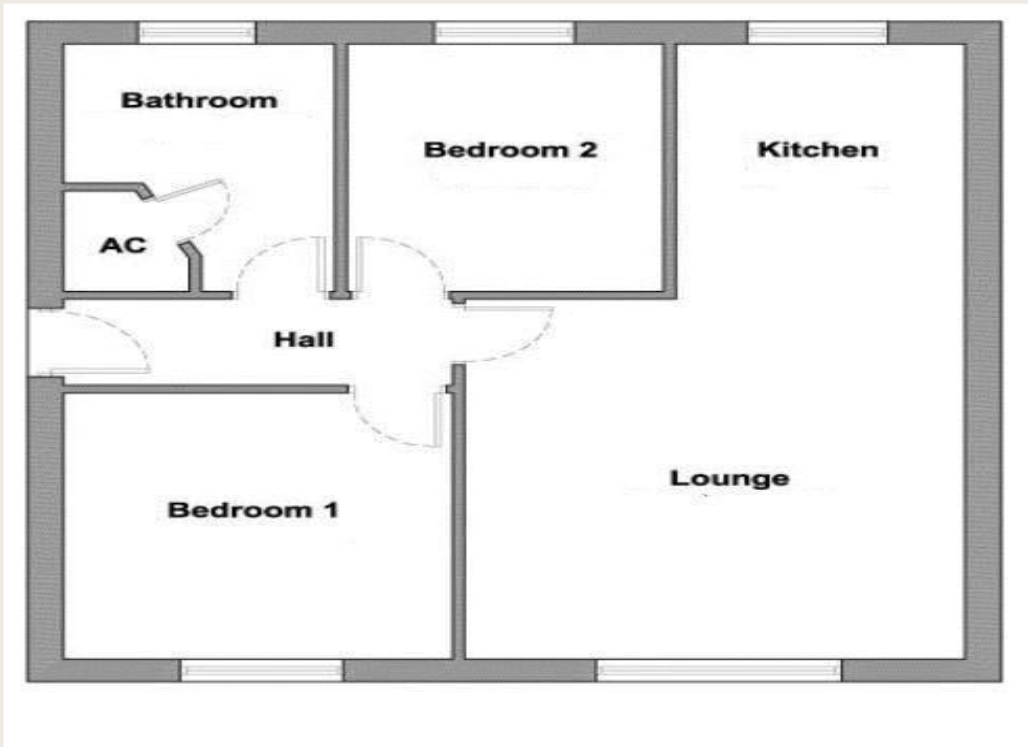
MAYFAIR
TOWN & COUNTRY



FLAT 18
Crewkerne, TA18 8FD
£650 pcm

MAYFAIR
TOWN & COUNTRY

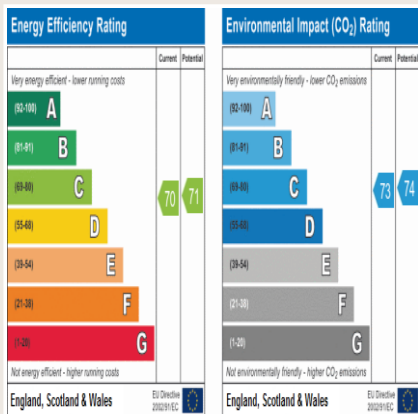
PROPERTY DETAILS



This well presented two bedroom ground floor flat is located on the outskirts of Crewkerne in a new development (Jubilee Close). The property benefits from electric heating throughout and double glazing. Accommodation briefly comprises; Entrance hall, open plan kitchen/sitting room ,two double bedrooms and bathroom, Allocated parking.

- ★ Modern Ground Floor Apartment
- ★ Beautifully Presented
- ★ Two Double Bedrooms
- ★ Close To Crewkerne
- ★ Fully Fitted Kitchen
- ★ Popular Development
- ★ EPC Rating : C

Local Authority: South Somerset Council. Council Tax Band: B.
EPC Rating: C.



TO ARRANGE A VIEWING OR FOR FURTHER INFORMATION ON THIS PROPERTY PLEASE CONTACT OUR LETTINGS TEAM

01460 74200

CREWKERNE@MAYFAIRPROPERTIES.NET

IMPORTANT NOTICE

We would like to inform prospective tenants that these particulars have been prepared as a general guide only. If there is at any point, which is of particular importance, verification should be obtained. They do not constitute a contract or part of a contract. Items shown in photographs are NOT necessarily included. Interest parties are advised to check availability and make an appointment to view before travelling to see a property. Floor plans – All measurements wall, doors, windows, fittings and appliances their sizes and locations are shown conventionally and are approximate and cannot be regarded as being representation either by the Landlord or his Agent. Room sizes should not be relied upon for furnishing purposes and are approximate.

