



£369,985

Leasehold

25 Meadow Court , 15 Hamilton Road

Sarisbury Green, Southampton, Hampshire SO31 7PU



Quick View

	2 Bedrooms		No
	1 Living Room		2 Bathrooms
	Retirement Property		EPC Rating B
	Permit may be available		Council Tax Band D

Reasons to View

- A peaceful retreat with a super social environment to enjoy the fun in life if you choose or enjoy the Sylvan back drop from your balcony with the tipple of your choice.
- An exceptionally well-designed complex meets all your needs. A sociable residents lounge is the hub of this community, with weekly organised events to choose from.
- Brand new, this first floor apartment is neutrally decorated and ready for you to choose your own carpets and curtains to add that finishing touch.
- The stylish white bathroom and ensuite boast anti slip porcelain flooring, heated towel rails and underfloor heating for luxury and comfort.
- The well-designed kitchen has been fitted with an induction hob, integrated oven, microwave and a fridge freezer. The washing machine is in the separate utility cupboard so eliminating noise.
- The 24 /7 Anchor call system provides complete peace of mind, should you ever need to use it, knowing someone is always on hand.

Description

This luxury complex, built for the over 55’s is a safe environment to enjoy living with like-minded people. The complex offers the retirement community an array of lifestyle amenities which include a hair dressers salon and beauty treatment room, as well as a guest suite and an inviting café to enjoy a meal when you don’t fancy cooking yourself.

We are sure you will appreciate the impeccably maintained communal facilities and gardens and feel reassured by the available support ensuring your changing needs are met.

Number 25 is located on the first floor and offers over 900 Sq. Ft of luxury living with a balcony overlooking the courtyard, so you can enjoy the view over the woodland beyond.

Neutrally decorated, and with skimmed ceilings giving a spacious airy feel, enhanced by the large windows throwing natural light in. The spacious hallway is home to the handy utility cupboard which washing machine. The main bathroom is very well fitted with a bath and a double headed shower over.

The open plan sitting/dining room opens onto the balcony, and to the kitchen which is very well fitted with white gloss units and fitted appliances with a window overlooking the gardens.

The main bedroom has a double wardrobe and enjoys the ensuite walk in shower. The 2nd bedroom is ideal for guests or a study/hobbies room.

Other Information

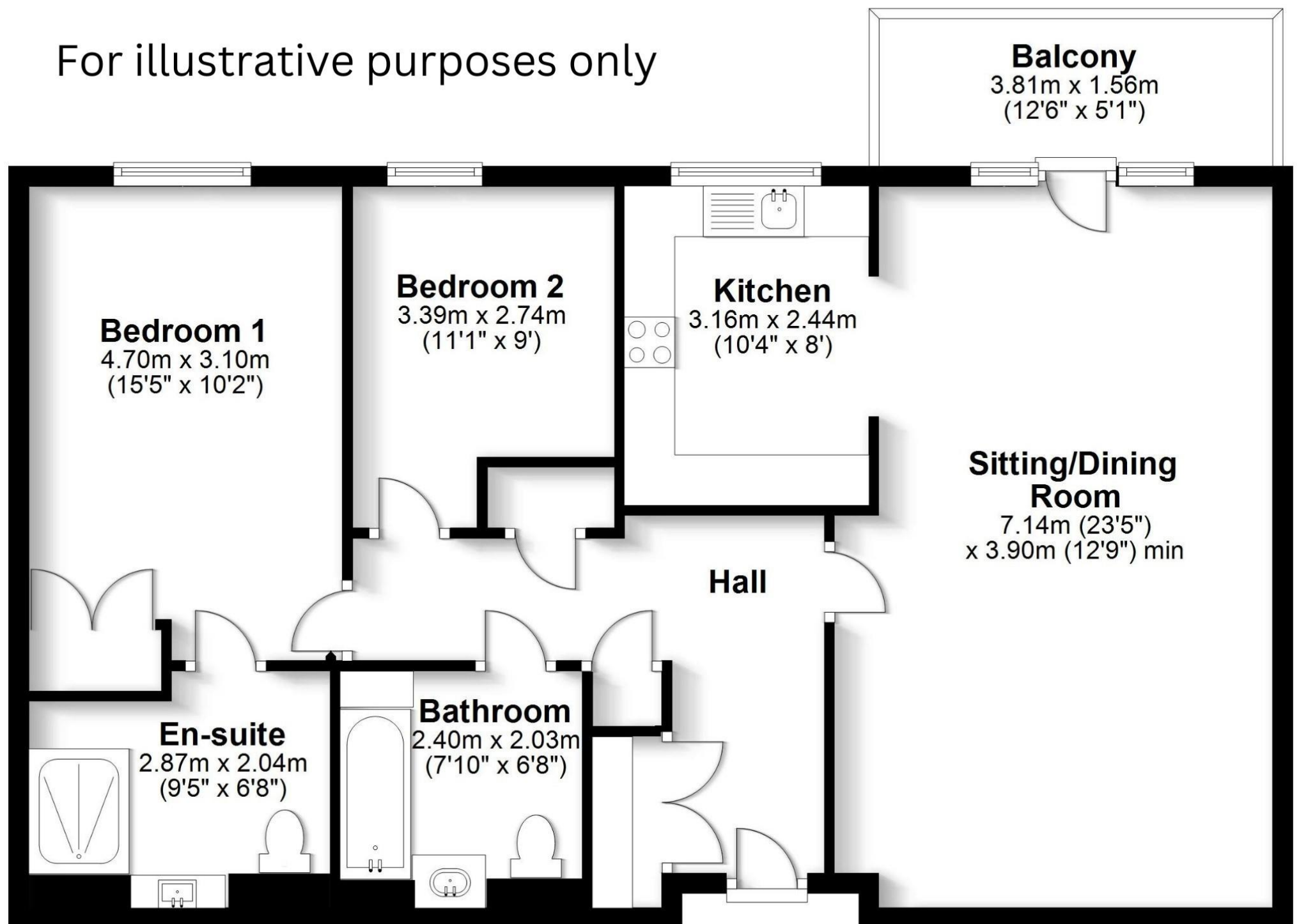
This is a leasehold property for the over 55's only. The 125 year lease commenced 1 December 2018. The service charge is currently £502.20 per month. Upon resale there is an admin fee payable of £660 and a contribution of 3% of the sale price towards the sinking fund.

Directions

<https://what3words.com/puffed.confident.inspector>

Meadow Court, Sarisbury Green, Southampton

For illustrative purposes only



Total area: approx. 84.5 sq. metres (909.3 sq. feet)

Robinson Reade endeavour to supply accurate and reliable property information in line with Consumer Protection from Unfair Trading Regulations 2008, however please contact the office before viewing if there is any aspect which is particularly important to you and we will be pleased to provide the relevant information. These property details do not constitute any part of an offer or contract, all measurements are approximate. Any services, appliances and heating systems listed have not been checked. We must point out that where we introduce you to a third party who offers conveyancing, removal or financial services, e.g. legal, mortgage and insurance advice, we may earn a commission. For more information go to www.robinsoneade.co.uk/referral-fees. Robinson Reade Ltd, Registered office: 10 Middle Road, Park Gate, Southampton, SO31 7GH, Co Reg No: 5185152



Pop in to see us at 10 Middle Road, Park Gate, Southampton, Hampshire, SO31 7GH

Email us sales@robinsonreade.co.uk Visit us www.robinsonreade.co.uk

Call us on 01489 579009

Independent Sales & Letting Agents for the Strawberry Coast