



Sutton under Whitestonecliffe, Thirsk

Guide price £495,000



3



2



2

Freehold | EPC rating: U

- Three Bedroom Detached Dorma Bungalow
- Private Garden

- Extended to the rear
- Off Street Parking and Garage
- Village Location

BELVOIR!

Property is personal

Email
thirsk@belvoir.co.uk

Phone
01845 527555

Description

Felstead is situated in the picturesque village of Sutton Under Whitestonecliffe, with three double bedrooms and two bathrooms this beautiful property has been extended to the rear with views over the stunning garden.

With a large master suite to the first floor, and ground floor bedrooms the property has a lot of family living space. The stunning kitchen opens onto the garden, the living room and dining room are open plan and also over look the garden.

Photographs



Rooms

Hall

On entering the front door you are welcomed into a hall offering access to all ground floor rooms and storage.

Dining Room

The dining room has been converted from the conservatory, now fitted with a solid roof the rear elevation is all windows overlooking the garden. A upvc door leads to the patio and garden beyond.

13.8ft x 11.1ft (4.22m x 3.39m)

Utility Room

The utility room has plumbing for the washing machine and tumble dryer and built in fridge. Finished with base and wall units in a slate grey colour and sink set into the worktop there is lots of useable storage. A large window to the side path.

9.1ft x 7.4ft (2.78m x 2.27m)

Bedroom Two

To the front of the property the second bedroom has a large window.

13ft x 10.5ft (3.95m x 3.21m)

Main Bedroom

The main bedroom has a large walk in closet, with dual aspect aspect windows this large double bedroom is a lovely space.

19.8ft x 12.1ft (6.02m x 3.7m)

Outside

Felstead is set on a large plot, with parking for multiple vehicles to the front and garage with an up and over door. To the rear is a large patio which wraps across the back of the property, down the steps is a lawn with well established borders and gravelled seating area beyond.

Living Room

The large living room is open plan with the dining room, this light airy space has a large window to the front elevation. The beamed ceiling and log burning stove add lovely features.

17.9ft x 11.5ft (5.45m x 3.52m)

Kitchen

The kitchen is the heart of the home and this one has the wow factor. Fitted with solid wood base and wall units the solid granite worktop also has a breakfast bar set into the central island. The range master has five gas burners and electric hob too. The kitchen is fitted with great features including pantry storage and in counter pop up electric sockets. A large fridge freezer and dishwasher all integrated. A stable door leads out to the patio. The flooring is Amtico, laid diagonally for a fantastic finish.

16.5ft x 10.7ft (5.04m x 3.25m)

House Bathroom

On the ground floor the house bathroom has a double size walk in shower cubicle with a heated towel rail and tiled walls and floor. An obscure glass window to the side.

7.1ft x 5.5ft (2.16m x 1.67m)

Bedroom Three

To the front of the property the third bedroom has fitted storage.

12.9ft x 7.4ft (3.94m x 2.27m)

Ensuite

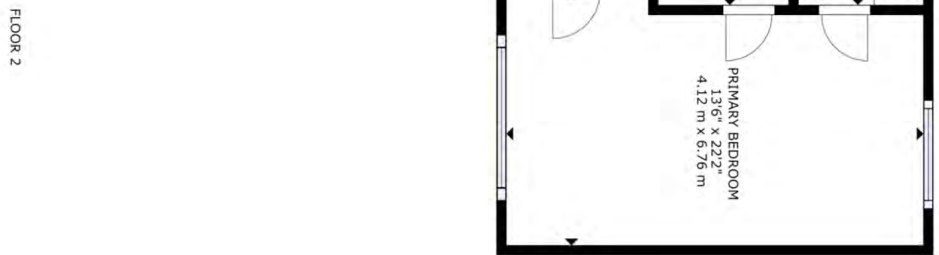
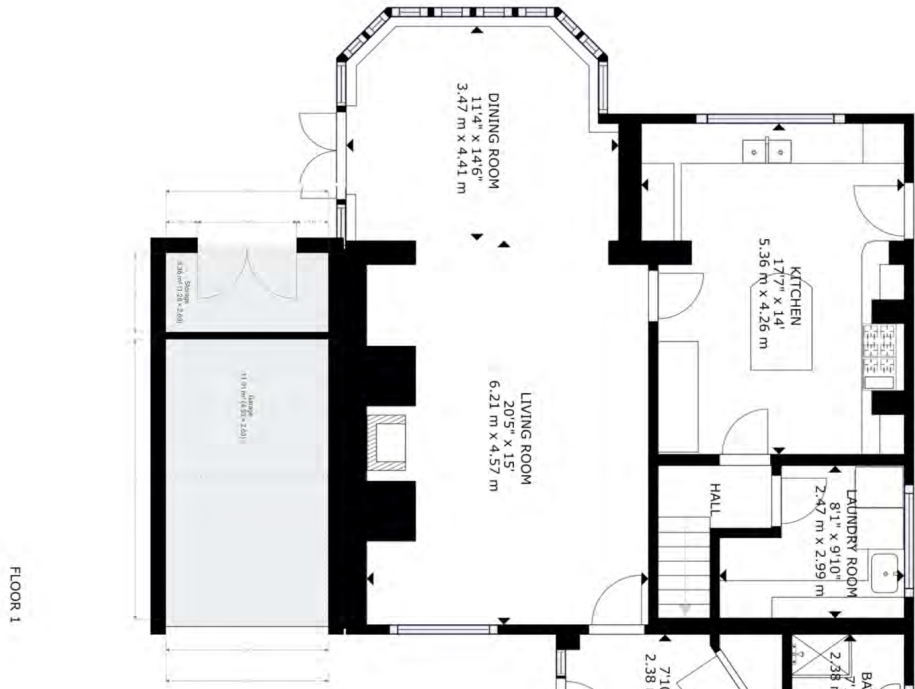
The ensuite bathroom has a white bathroom suite with overhead shower. With wood paneling and tiled floor.

7.8ft x 6.2ft (2.37m x 1.88m)

More photographs



Floorplan



GROSS INTERNAL AREA
FLOOR 1: 1300 sq ft, 120.76 m², FLOOR 2: 480 sq ft, 44.57 m²
TOTAL: 1780 sq ft, 165.33 m²
SIZES AND DIMENSIONS ARE APPROXIMATE, ACTUAL MAY VARY

