



4 BEDROOM SEMI-DETACHED

# The Preston



Note: Image for illustrative purposes only.

This semi-detached four-bedroom, three-storey townhouse boasts a contemporary design and provides an abundant amount of living space.

## GROUND FLOOR

- A modern and generously sized kitchen.
- Cloakroom off the hallway.
- Large open-plan living and dining room.
- French doors leading to the rear garden.

## FIRST FLOOR

- Two double-sized bedrooms.
- Beautifully modern main bathroom.
- Separate storage cupboard.
- Bedroom 1 includes a fitted sliding wardrobe and en-suite.

## SECOND FLOOR

- Two sizeable bedrooms, 3 and 4.
- Generous additional storage.

Phase 1 - Plots 30, 31, & 46 - 49

Phase 2 - Plots 98, 99, 104 & 105 | Phase 3 - Plots 60, 61, 64 & 65

Sq. ft 1,140

Please note: Materials used vary on each home. Please ask the Sales Consultant for specific details.

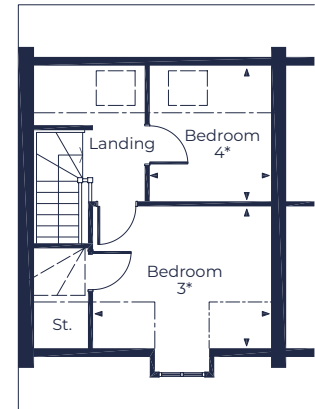
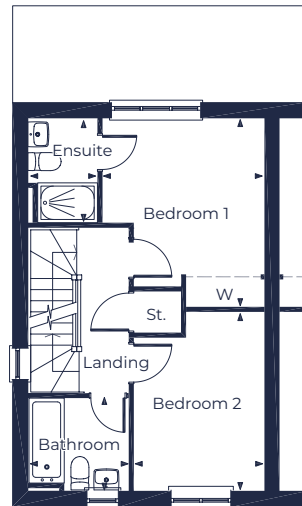
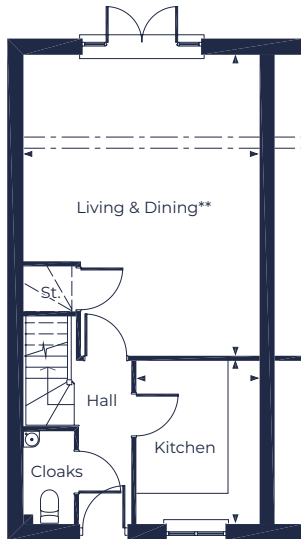




# FLOOR PLAN

## The Preston

www.fletcherhomes.co.uk



### GROUND FLOOR

**Living & Dining\*\***  
4.66m x 5.99m (15'4" x 19'8")

**Kitchen**  
2.41m x 3.22m (7'11" x 10'7")

-----  
\*\* Denotes structural beam

### FIRST FLOOR

**Bedroom 1**  
3.20m x 3.73m (10'6" x 12'3")

**Ensuite**  
1.33m x 2.02m (4'4" x 6'8")

**Bedroom 2**  
2.56m x 3.54m (8'5" x 11'7")

**Bathroom**  
1.96m x 1.82m (6'5" x 6'0")

### SECOND FLOOR

**Bedroom 3\***  
3.51m x 2.76m (11'6" x 9'1")

**Bedroom 4\***  
2.39m x 2.62m (7'10" x 8'7")

-----  
\* Denotes restricted headroom

KEY St. = Store | W = Wardrobe | CC = Hot Water Cylinder Cupboard

**Please Note:** Every Fletcher Homes' development is designed to be as individual as possible. External finishes and specifications may therefore vary on each property. Full details on the home of your choice are available from the Sales Department. This information sheet outlines the plans, specifications and layout for the development at the time of printing. The information has been prepared for guidance only and does not form part of an offer of a contract or warranty. All floor plans and artists impressions are only intended as a guide and should not be relied upon for precise measurements. All descriptions and dimensions are indicative and should not be used as the basis for purchasing furnishings, such as carpets or curtains, appliances or furniture. Such information is given in good faith and believed to be correct but any intending purchasers or lessees should not rely upon them as statements or representations of fact but satisfy themselves by inspection or otherwise as to the correctness of each of them. Any customer choices contained within the specification depend upon the construction stage reached when reservation is made. Fletcher Homes operates a policy of continual improvement and reserves the right to alter its designs, specifications or floor plans/layout and prices without prior notice. Should you require further clarification or confirmation of any matters contained on this information sheet, they should be raised through your solicitor or conveyor.