



[www.dpsestates.co.uk](http://www.dpsestates.co.uk)



**159 Sentinel House Surrey Street, Norwich, NR1 3NE**

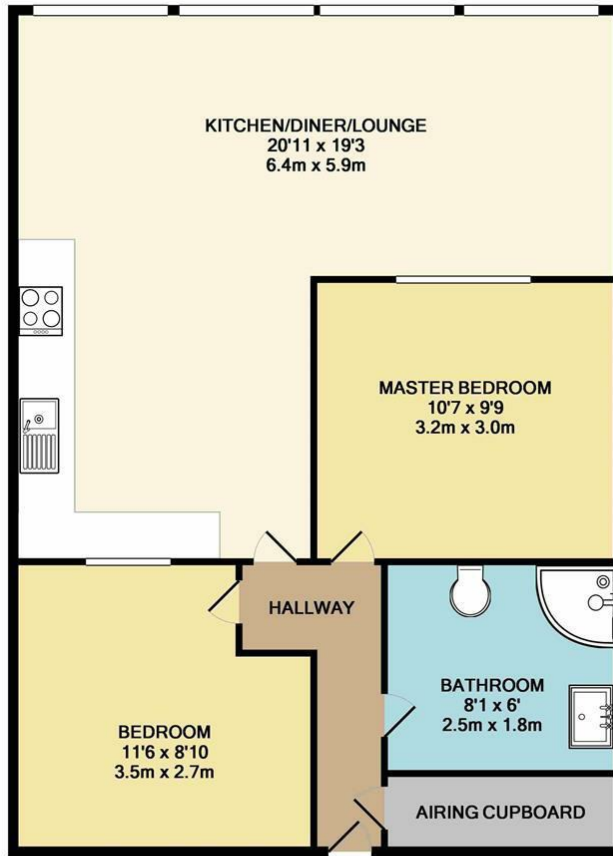
**Asking price £200,000**

INVESTORS DELIGHT.....This stylish two bedroom apartment offers an open plan kitchen/living room with an abundance of natural light. A key feature to this property is the fully integrated kitchen and ultra modern three-piece shower room, as well as the full furnishings throughout .... Rental income £950 a month.

Sentinel House also benefits from a city centre location, concierge service and residents' gym.



# Floor Plan



TOTAL APPROX. FLOOR AREA 1147 SQ.FT. (106.5 SQ.M.)

Whilst every attempt has been made to ensure the accuracy of the floor plan contained here, measurements of doors, windows, rooms and any other items are approximate and no responsibility is taken for any error, omission, or mis-statement. This plan is for illustrative purposes only and should be used as such by any prospective purchaser. The services, systems and appliances shown have not been tested and no guarantee as to their operability or efficiency can be given

Made with Metropix ©2019

# Area Map



# Energy Efficiency Graph

Energy Efficiency Rating		Current	Potential
Very energy efficient - lower running costs			
(92 plus) <b>A</b>			
(81-91) <b>B</b>			
(69-80) <b>C</b>			
(55-68) <b>D</b>			
(39-54) <b>E</b>			
(21-38) <b>F</b>			
(1-20) <b>G</b>			
Not energy efficient - higher running costs			
<b>England &amp; Wales</b>		EU Directive 2002/91/EC	
Environmental Impact (CO <sub>2</sub> ) Rating		Current	Potential
Very environmentally friendly - lower CO <sub>2</sub> emissions			
(92 plus) <b>A</b>			
(81-91) <b>B</b>			
(69-80) <b>C</b>			
(55-68) <b>D</b>			
(39-54) <b>E</b>			
(21-38) <b>F</b>			
(1-20) <b>G</b>			
Not environmentally friendly - higher CO <sub>2</sub> emissions			
<b>England &amp; Wales</b>		EU Directive 2002/91/EC	

These particulars, whilst believed to be accurate are set out as a general outline only for guidance and do not constitute any part of an offer or contract. Intending purchasers should not rely on them as statements of representation of fact, but must satisfy themselves by inspection or otherwise as to their accuracy. No person in this firm's employment has the authority to make or give any representation or warranty in respect of the property.



T: 01603 558 666  
 M: 07435 968375  
 E: info@dpsestates.co.uk or maintenance@dpsestates.co.uk  
 A: 48 Market Place, North Walsham, Norfolk, NR28 9BT