



16 School Lane, Lostock Hall, Preston, PR5 5JS

£189,950



Situated in the peaceful area of School Lane, Lostock Hall, Preston, this semi-detached house presents an excellent opportunity for those seeking a property to make their own. With no onward chain, you can move in and start your journey without delay.

Upon entering, you will find a spacious ground floor that boasts a large lounge, perfect for relaxing or entertaining guests. The open kitchen and dining area create a welcoming space for family meals and gatherings. The layout is both practical and inviting, making it an ideal setting for modern living.

The first floor features two generously sized double bedrooms, providing ample space for rest and relaxation. Additionally, there is a box room that can be transformed into a walk-in wardrobe or a home office, catering to your personal needs. The family bathroom is equipped with a three-piece suite, ensuring functionality and convenience.

Externally, the property offers a rear garden that combines stones, flags, and grass, providing a versatile outdoor space for gardening or leisure activities. An attached double garage adds further appeal, offering secure storage for your vehicle or garden equipment. The driveway is spacious enough to accommodate several cars, making it perfect for families or those who enjoy hosting visitors.

This property is a blank canvas, ready for your personal touch and updates. With its prime location and ample space, it is an excellent choice for families or individuals looking to settle in a friendly community. Don't miss the chance to make this house your home. EPC rating C, Council Tax Band C, Freehold

Please note the room measurements can be found on the floorplan.













Road Map



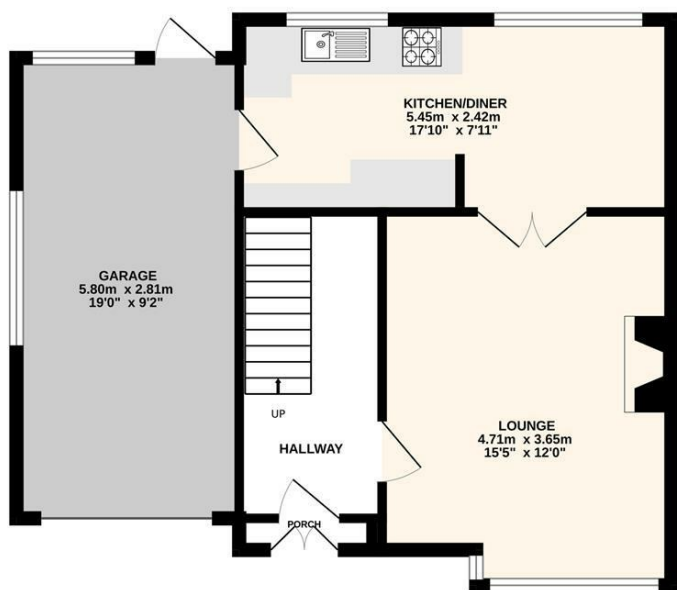
Hybrid Map



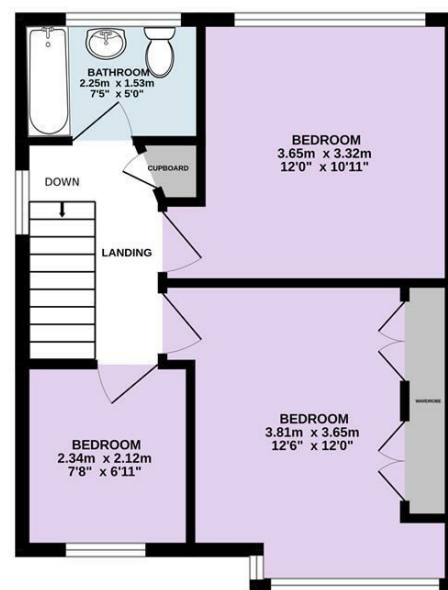
Terrain Map



GROUND FLOOR
53.0 sq.m. (571 sq.ft.) approx.



1ST FLOOR
37.3 sq.m. (401 sq.ft.) approx.



TOTAL FLOOR AREA : 90.3 sq.m. (972 sq.ft.) approx.
Every attempt is made to ensure accuracy, however all measurements are approximate. This plan is for illustrative purposes only and is not to scale.
Made with Metropix ©2025

Viewing

Please contact our Preston Office on 01772 698888 if you wish to arrange a viewing appointment for this property or require further information.

Misdescriptions Act

These particulars, whilst believed to be accurate are set out as a general outline only for guidance and do not constitute any part of an offer or contract. Intending purchasers should not rely on them as statements of representation of fact, but must satisfy themselves by inspection or otherwise as to their accuracy. No person in this firm's employment has the authority to make or give any representation or warranty in respect of the property.