



7 Park Close, Penwortham Residential Park, Penwortham, Preston, PR1 9YD

£129,950



This Detached Park Home stands in the beautiful grounds of Penwortham Residential Park, and viewing is highly recommended. The internal accommodation comprises a fitted kitchen, separate dining room, spacious lounge, light and airy conservatory, two double bedrooms with fitted wardrobes and a three piece bathroom, benefiting from central heating and double glazing throughout. Externally there is a detached garage, off-road parking as well as low maintenance gardens to front rear and side.

Please note the room measurements for this Park Home can be found on the floorplan.

Freehold, Council Tax Band A.



























## Road Map



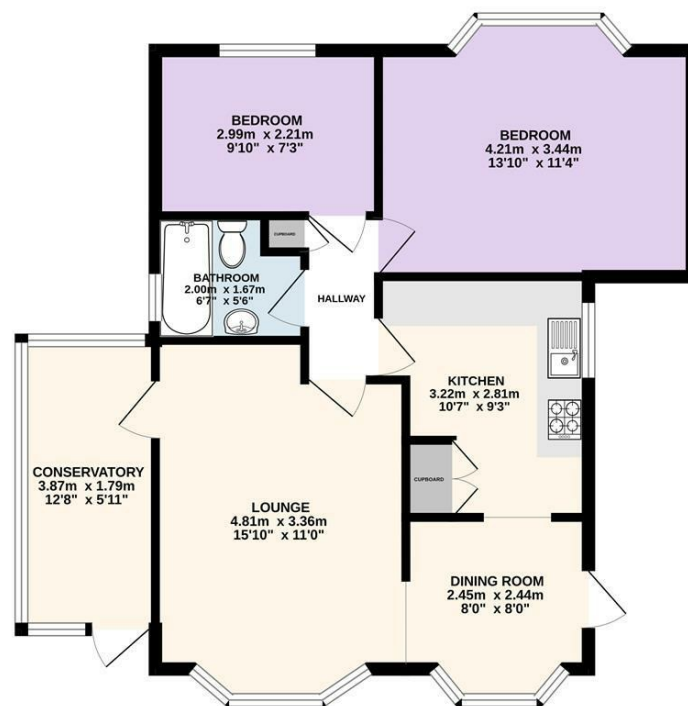
## Hybrid Map



## Terrain Map



GROUND FLOOR  
61.3 sq.m. (660 sq.ft.) approx.



TOTAL FLOOR AREA : 61.3 sq.m. (660 sq.ft.) approx.  
Every attempt is made to ensure accuracy, however all measurements are approximate. This plan is for illustrative purposes only and is not to scale.  
Made with Metropix ©2025

## Viewing

Please contact our Preston Office on 01772 698888 if you wish to arrange a viewing appointment for this property or require further information.

### **Misdescriptions Act**

These particulars, whilst believed to be accurate are set out as a general outline only for guidance and do not constitute any part of an offer or contract. Intending purchasers should not rely on them as statements of representation of fact, but must satisfy themselves by inspection or otherwise as to their accuracy. No person in this firm's employment has the authority to make or give any representation or warranty in respect of the property.