



26 Aspenwood Close, Bamber Bridge, Preston, PR5 6DR

£165,000

 3
  1
  1
  B

Available with NO CHAIN, this immaculately presented end terrace house stands on a lovely estate close to the local amenities of Bamber Bridge. Suitable for first time buyers, investors and small families, the accommodation comprises an entrance hallway, lounge, kitchen/diner and ground floor WC. On the first floor, there are three bedrooms and the family bathroom. Externally, the property provides off road parking for several cars to the front and an enclosed tiered garden with a flagged patio to the rear. EPC rating B. Council tax band B. Leasehold - details on request.

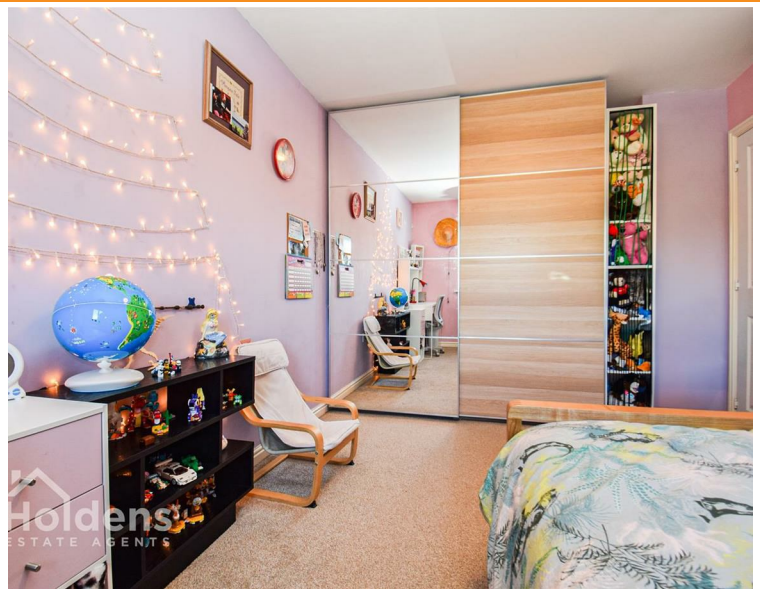












Road Map



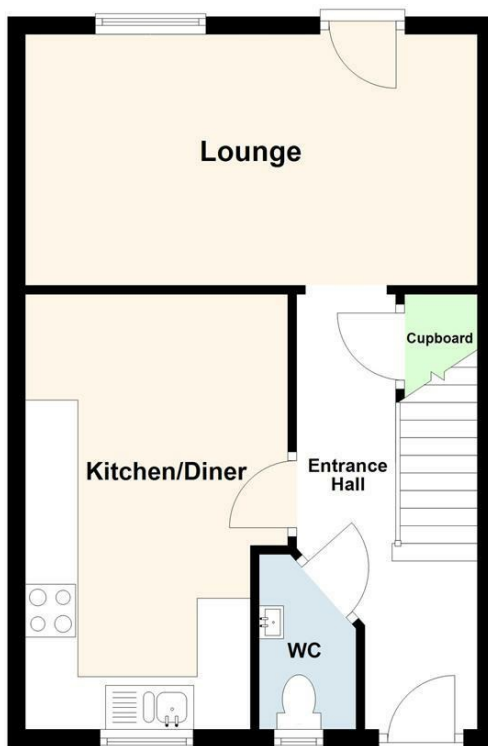
Hybrid Map



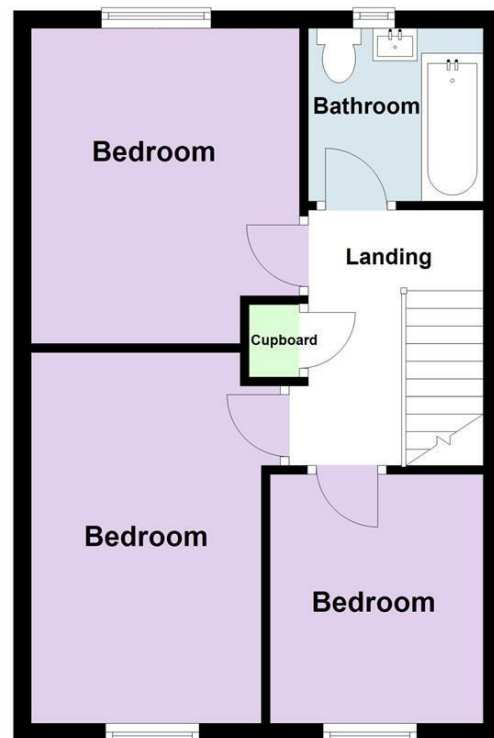
Terrain Map



Ground Floor



First Floor



Total area: approx. 81.0 sq. metres (872.0 sq. feet)

Every attempt is made to ensure accuracy, however all measurements are approximate. This plan is for illustrative purposes only and is not to scale.
Plan produced using PlanUp.

Viewing

Please contact our Preston Office on 01772 698888 if you wish to arrange a viewing appointment for this property or require further information.

Misdescriptions Act

These particulars, whilst believed to be accurate are set out as a general outline only for guidance and do not constitute any part of an offer or contract. Intending purchasers should not rely on them as statements of representation of fact, but must satisfy themselves by inspection or otherwise as to their accuracy. No person in this firm's employment has the authority to make or give any representation or warranty in respect of the property.