

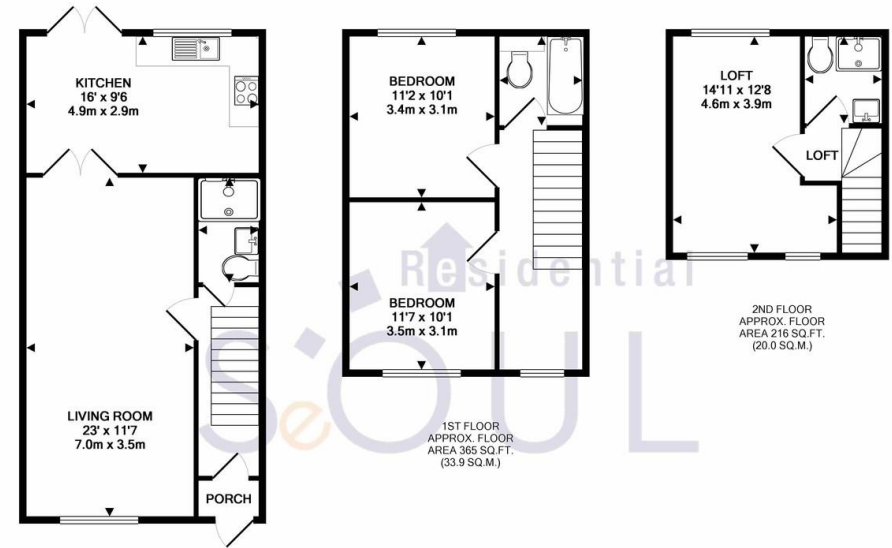


- 5 mins walk to Burlington Junior School
- Refurbished three bathrooms
- Three double bedrooms
- Wooden floor

Queens Road, New Malden

£1,850 pcm

SeOUL Residential are glad to present to the market this spacious and modern three bedroom house located on the heart of New Malden. Neutrally decorated throughout the house features refurbished three bathrooms, wooden floor and loft converted double bedroom. Located on a quiet residential road close to amenities and a short walk from New Malden High Street and BR Station (0.7 mile). The house is also close to good local schools.



TOTAL APPROX. FLOOR AREA 1101 SQ.FT. (102.3 SQ.M.)
 Whilst every attempt has been made to ensure the accuracy of the floor plan contained here, measurements of doors, windows, rooms and any other items are approximate and no responsibility is taken for any error, omission, or mis-statement. This plan is for illustrative purposes only and should be used as such by any prospective purchaser. The services, systems and appliances shown have not been tested and no guarantee as to their operability or efficiency can be given.
 Made with Metropix ©2018



Energy Efficiency Rating		Current	Potential
Very energy efficient - lower running costs			
(92 plus)	A		
(81-91)	B		
(69-80)	C		
(55-68)	D	66	70
(39-54)	E		
(21-38)	F		
(1-20)	G		
Not energy efficient - higher running costs			
England & Wales		EU Directive 2002/91/EC	

Environmental Impact Rating (CO ₂)		Current	Potential
Very environmentally friendly - lower CO ₂ emissions			
(02 plus)	A		
(81-91)	B		
(69-80)	C		
(55-68)	D	60	65
(39-54)	E		
(21-38)	F		
(1-20)	G		
Not environmentally friendly - higher CO ₂ emissions			
England & Wales		EU Directive 2002/91/EC	

SeOUL Residential Ltd
 158 High Street
 New Malden
 KT3 4ES

www.sr4u.co.uk
 020 8942 3579 / 020 8949 4989
 info@sr4u.co.uk

Agents Note: Whilst every care has been taken to prepare these sales particulars, they are for guidance purposes only. All measurements are approximate and for general guidance purposes only and they should not be relied upon and potential buyers are advised to recheck the measurements.