



H O M E D : I N

18 Station Road, Southwater, RH13 9HQ



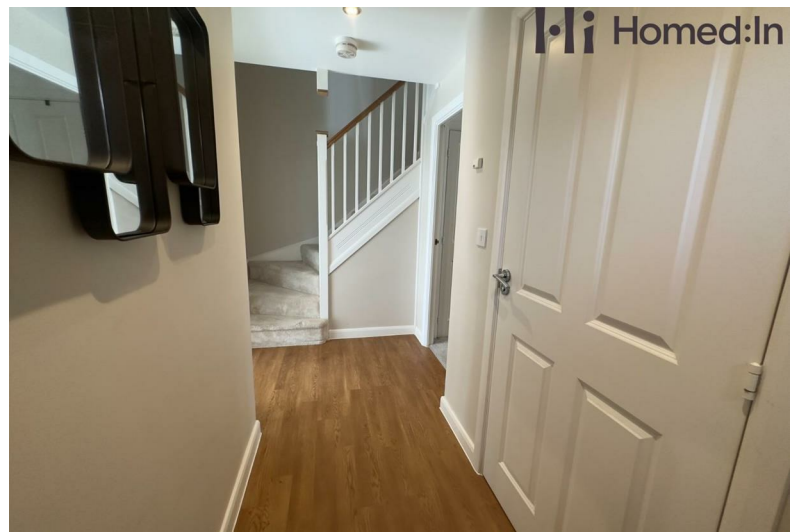
Ottley Way

Broadbridge Heath, Horsham, RH12 3GU

Price Guide £500,000



Ottley Way



Description

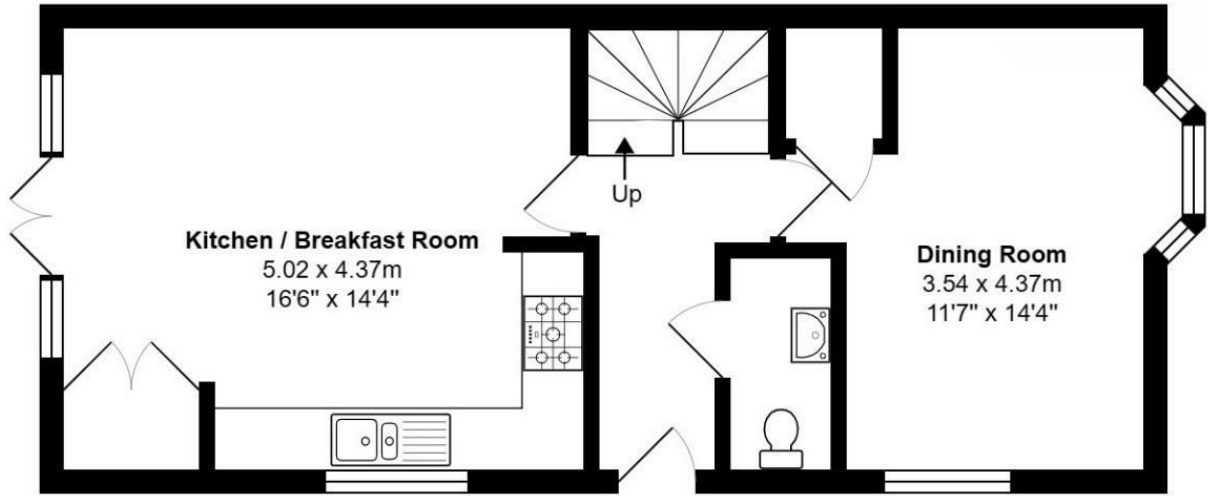
If you're in the market for a modern townhouse with versatile accommodation and 4 double bedrooms, this property may have the answer.

- Stylish 3/4 Bedroom Home from 2014 (David Wilson Homes)
- Versatile, Modern Accommodation Throughout
- Master Bedroom with En-suite
- Sunny South Facing Garden - Very Private
- 1,360 sq ft Floorplan
- *VIDEO IN TAB*
- Car Port and Parking for 3 Vehicles
- A Must View Home, Enquire Today



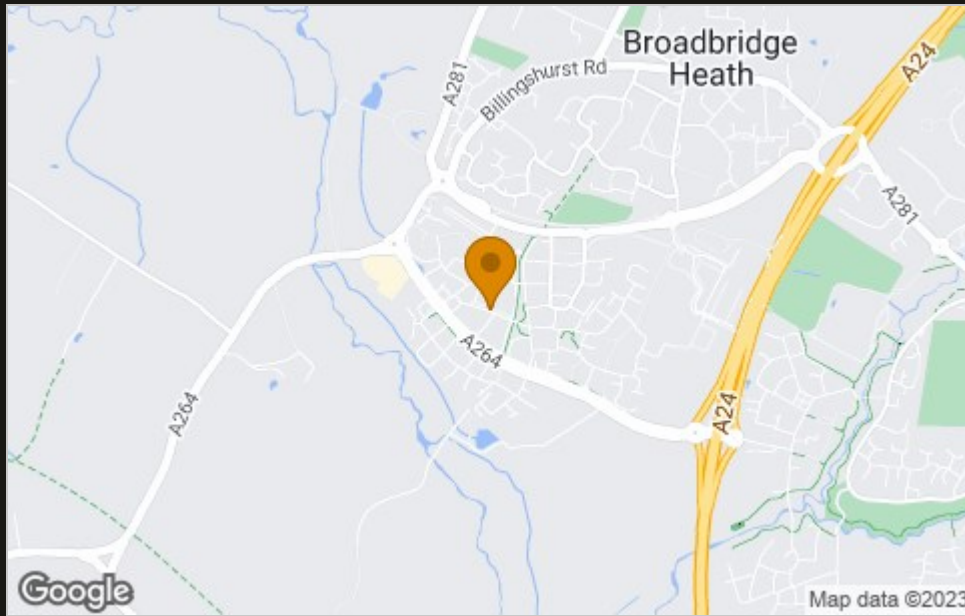


Floor Plan



Ground Floor

Area Map



Viewing

Please contact our Horsham Office on 01403 597595 if you wish to arrange a viewing appointment for this property or require further information.

Energy Efficiency Graph

Energy Efficiency Rating		Current	Potential
Very energy efficient - lower running costs			
(92 plus) A			
(81-91) B			
(69-80) C			
(55-68) D			
(39-54) E			
(21-38) F			
(1-20) G			
Not energy efficient - higher running costs			
England & Wales		EU Directive 2002/91/EC	
Environmental Impact (CO ₂) Rating		Current	Potential
Very environmentally friendly - lower CO ₂ emissions			
(92 plus) A			
(81-91) B			
(69-80) C			
(55-68) D			
(39-54) E			
(21-38) F			
(1-20) G			
Not environmentally friendly - higher CO ₂ emissions			
England & Wales		EU Directive 2002/91/EC	

These particulars, whilst believed to be accurate are set out as a general outline only for guidance and do not constitute any part of an offer or contract. Intending purchasers should not rely on them as statements of representation of fact, but must satisfy themselves by inspection or otherwise as to their accuracy. No person in this firm's employment has the authority to make or give any representation or warranty in respect of the property.

To **GET A FREE VALUATION** Call us on: **01403 597595**
or email us at: info@homedin.co.uk